

Drive unit

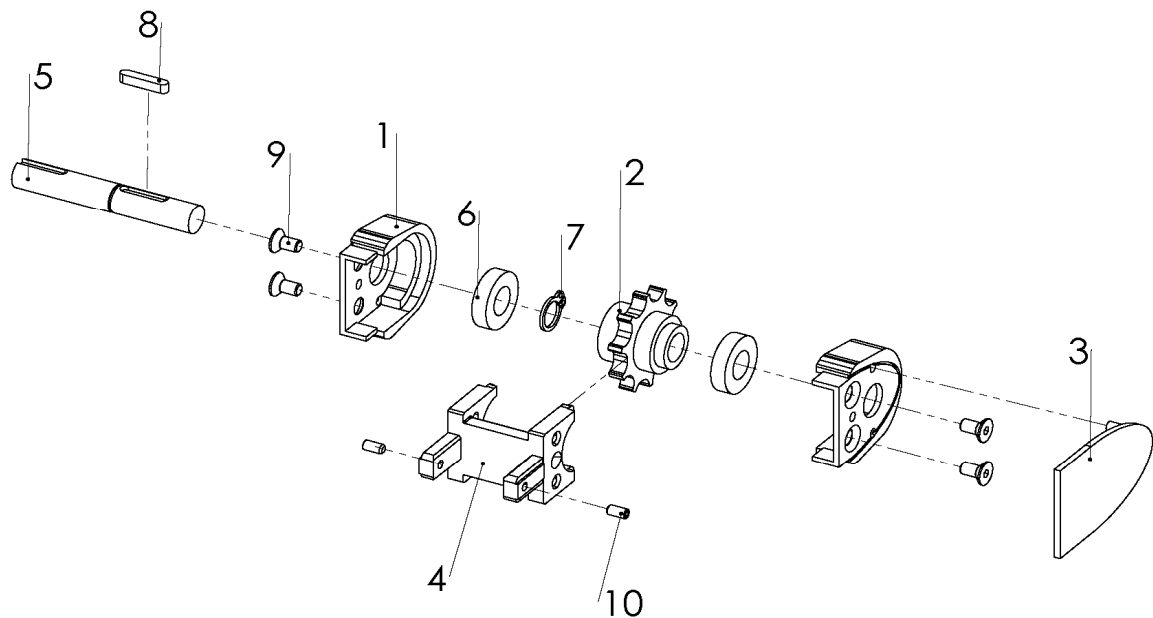
System F45, FS, FL, FM, FK, FH, FB

Content

Conveyor system F45 - drive unit
Conveyor system FS - drive unit
Conveyor system FL - drive unit
Conveyor system FM - drive unit
Conveyor system FK - drive unit
Conveyor system FH - drive unit
Conveyor system FB - drive unit
Product index - index

FUEB 0L/R

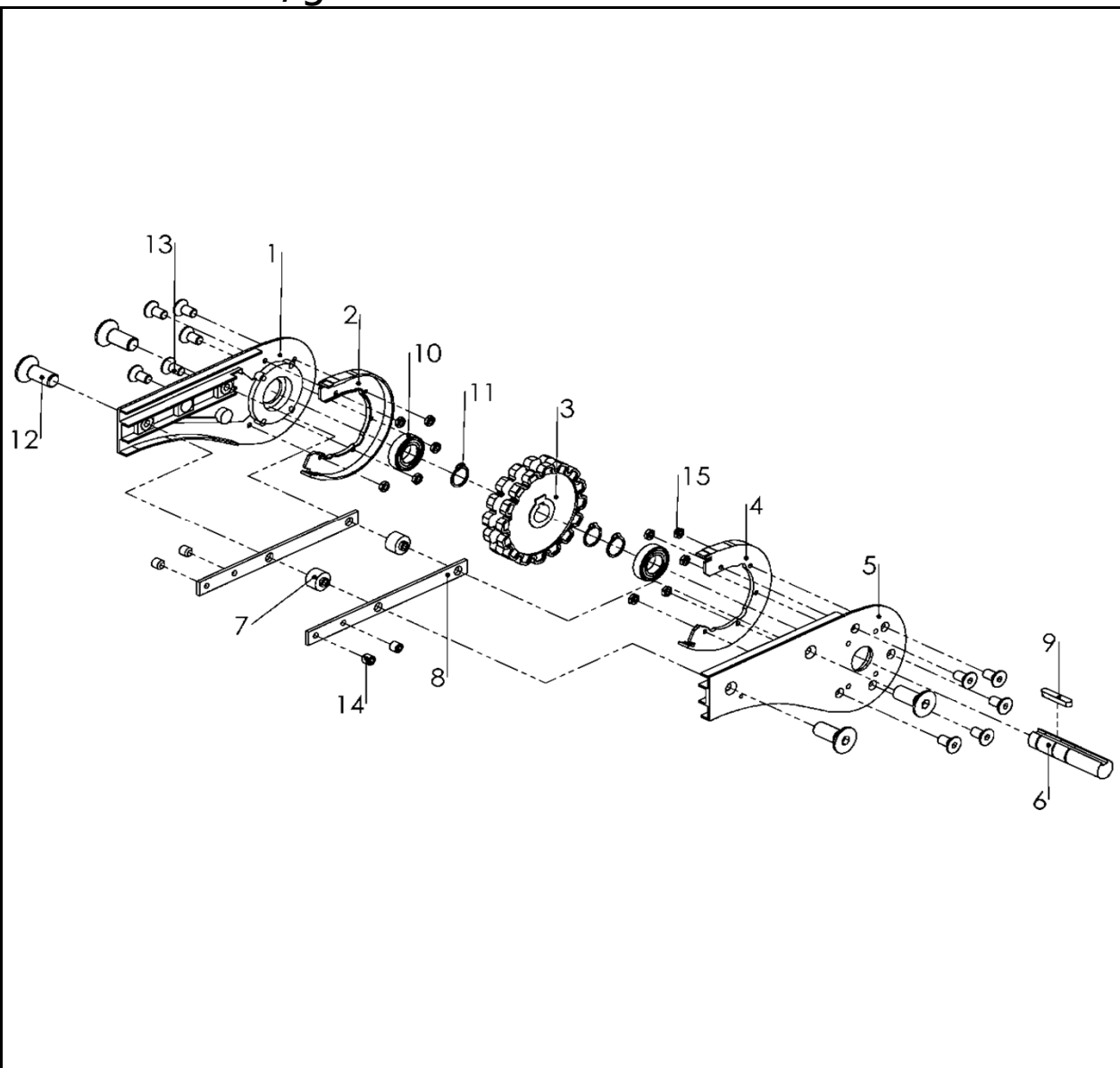
End drive unit , direct drive



Item	Part No.	Description	Qty
1	F5112193	Screw	2
2	Wheel For FUEJ50,FUEB 0L(R)U		1
3	F5112536	Cover	1
4	F5112527	Connecting	1
5	Shaftt For FUEB 0L(R)U L=75.3		1
6	Bearing-61901	Bearing	2
7	Retaining ring	Retaining	1
8	Key 4x2-20	Wedge	1
9	M5X10	Screw	4
10	M4X8	Screw	2

FSEB 0HLGUA/0HRGUA

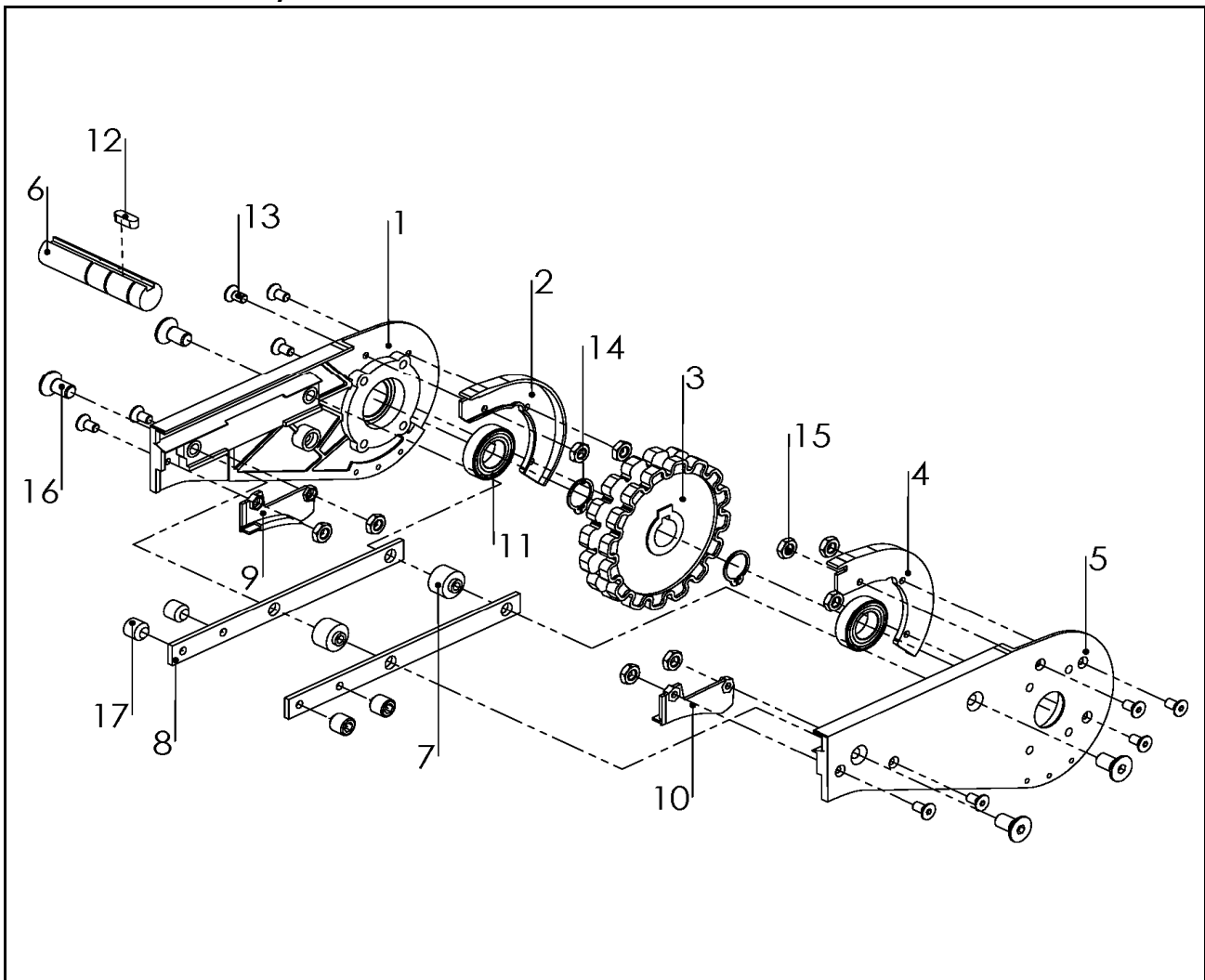
End drive unit, guided Basic unit



Item	Part No.	Description	Qty
1	For FSEB 0HLGUA/0HRGUA	Side plate L	1
2	For FSEB 0HLGUA/0HRGUA	Steering guide L	2
3	F3921735A	Drive wheel	1
4	For FSEB 0HLGUA/0HRGUA	Steering guide R	1
5	For FSEB 0HLGUA/0HRGUA	Side plate R	1
6	F3921741A	Shaft	1
7	For FSEB 0HLGUA/0HRGUA	Spacer	2
8	F3921738A	Connecting strip	2
9	Key	8x7-25	1
10	Bearing6005	Bearing	2
11	C rings	Retaining ring	4
12	M8X16	Screw	4
13	M5X12	Screw	10
14	M8X8	Screw	4

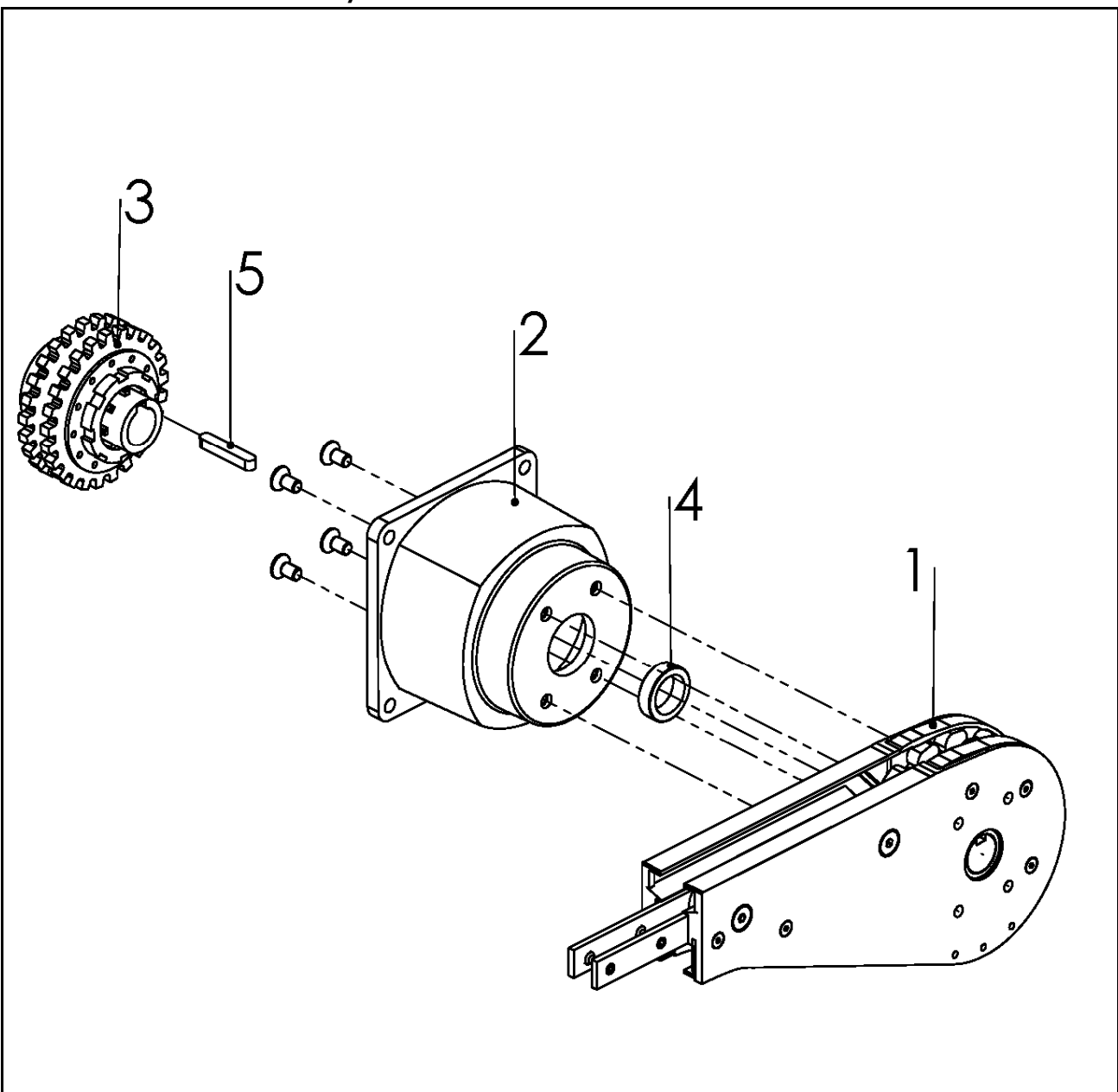
FSEB 0HLUA/0HRUA

End drive unit, Basic unit



Item	Part No.	Description	Qty
1	F3921745A	Side plate L	1
2	F3921740A	Steering guide L	1
3	F3921735A	Drive wheel	1
4	F3921739A	Steering guide R	1
5	F3921744A	Side plate R	1
6	F3921741A	Drive Shaft	1
7	F3921917A	Spacer	2
8	F3921738A	Connecting strip	2
9	F3921737A	Guide-L	1
10	F3921736A	Guide-R	1
11	Bearing 6005	Bearing	2
12	Key	8x7-20	1
13	M5X5	Screw	10
14	C rings	Retaining ring	2
15	M5 NUT	Screw	10
16	M8X16	Screw	4
17	M8X8	Screw	4

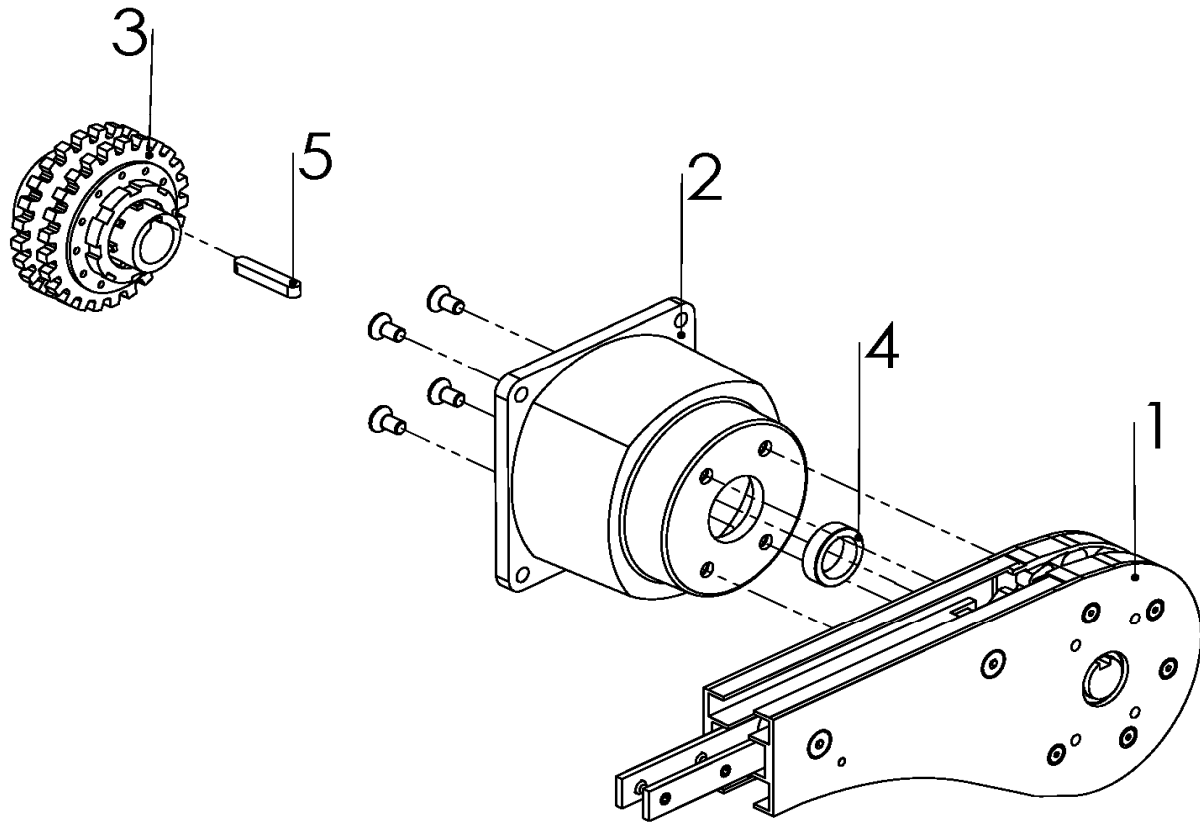
End drive unit, direct drive 0-unit-FSEB 0HLP/HRPA



Item	Part No.	Description	Qty
1	FSEB 0HLUA	Basic unit (left-hand version)	1
	FSEB 0HRUA	Basic unit (right-hand version)	1
2	F3920084	Flange	1
3	F5054003	Slip clutch $\Phi 20$ - $\Phi 25$ mm	1
4	F3921652	Distance ring	1
5	Wedge	8x7-40	1

End drive unit for vertical wedge conveyor

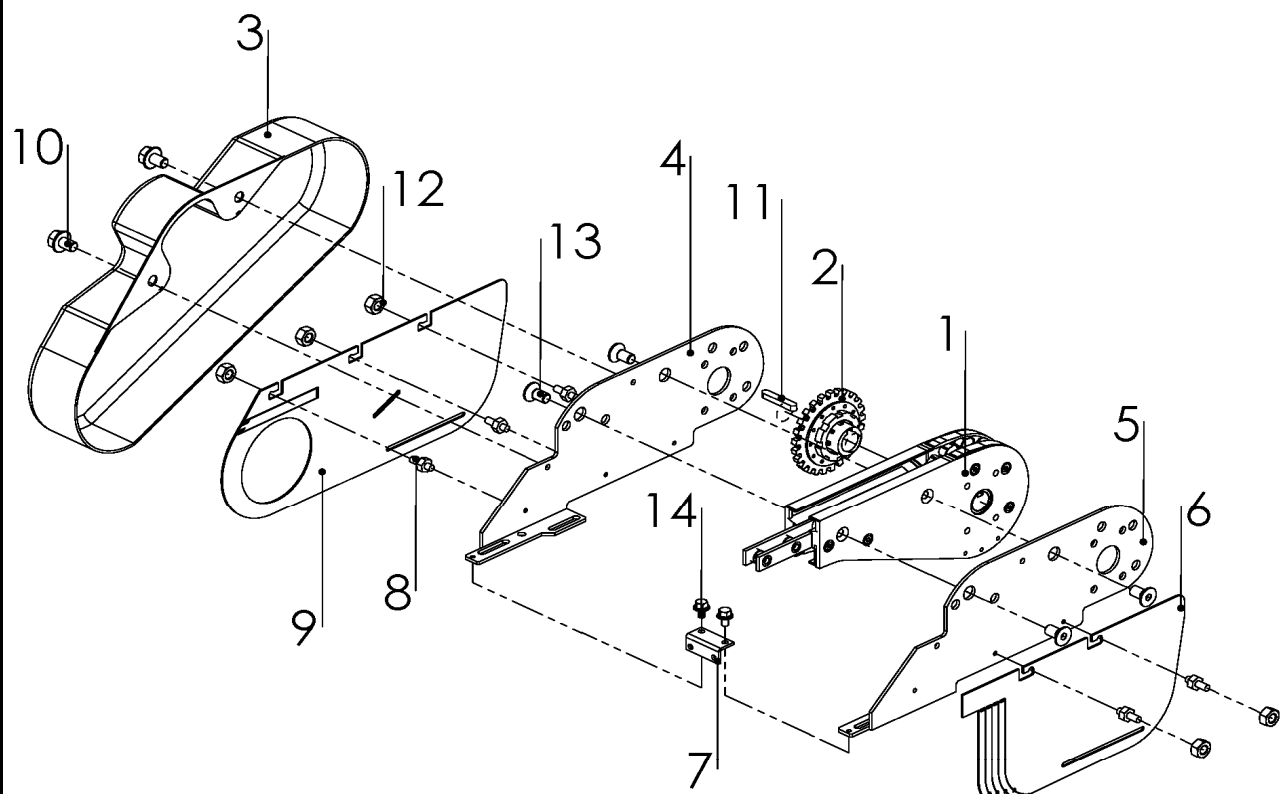
0-unit-FSEB 0HLGP/HRGP



Item	Part No.	Description	Qty
1	FSEB 0HLGUA	Basic unit (left-hand version)	1
	FSEB 0HRGUA	Basic unit (right-hand version)	1
2	F3920084	Flange	1
3	F5054003	Slip clutch $\Phi 20$ - $\Phi 25$ mm	1
4	F3921652	Distance ring	1
5	Wedge	8x7-40	1

End drive unit

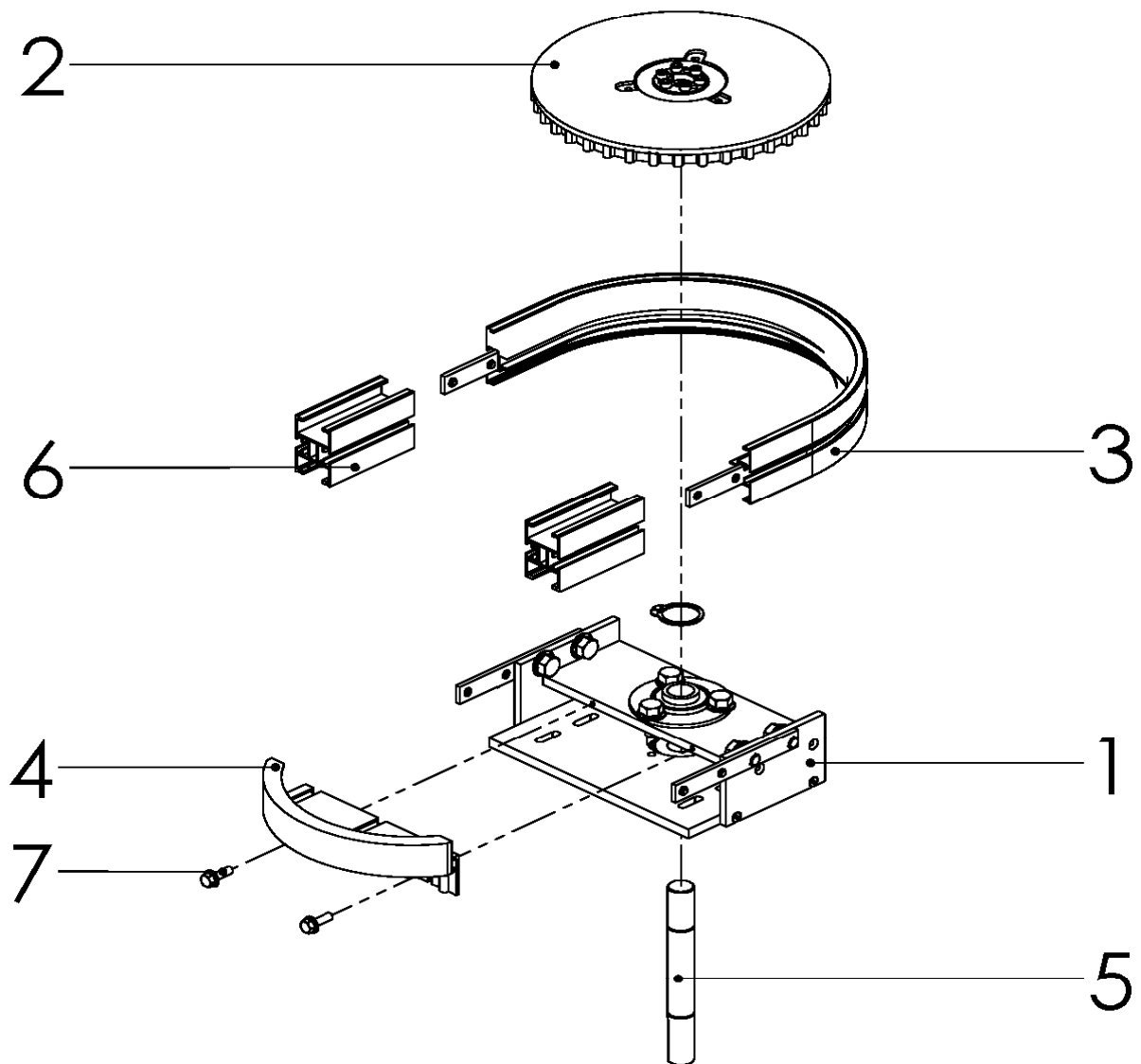
0-unit-FSEB 0 HLA/HRA



Item	Part No.	Description	Qty
1	FSEB 0 HLUA	Basic unit (left-hand version)	1
	FSEB 0 HRUA	Basic unit (right-hand version)	1
2	F3904324	Slip clutch $\Phi 25\text{mm}$	1
3	F3904431A	Transmission cover	1
4	F3921751A	Motor bracket L	1
5	F3921752A	Motor bracket R	1
6	F3904665A	Slack protection R	1
7	F3921753A	Adjusting block	1
8	F3904862	Screw	5
9	F3904666A	Slack protection L	1
10	F3904855	Screw	2
11	Key 8x7-40	Wedge	1
12	M5 Nut	Nut	5
13	M8X20	Screw	4
14	M5x8	Screw	2

Horizontal bend drive unit

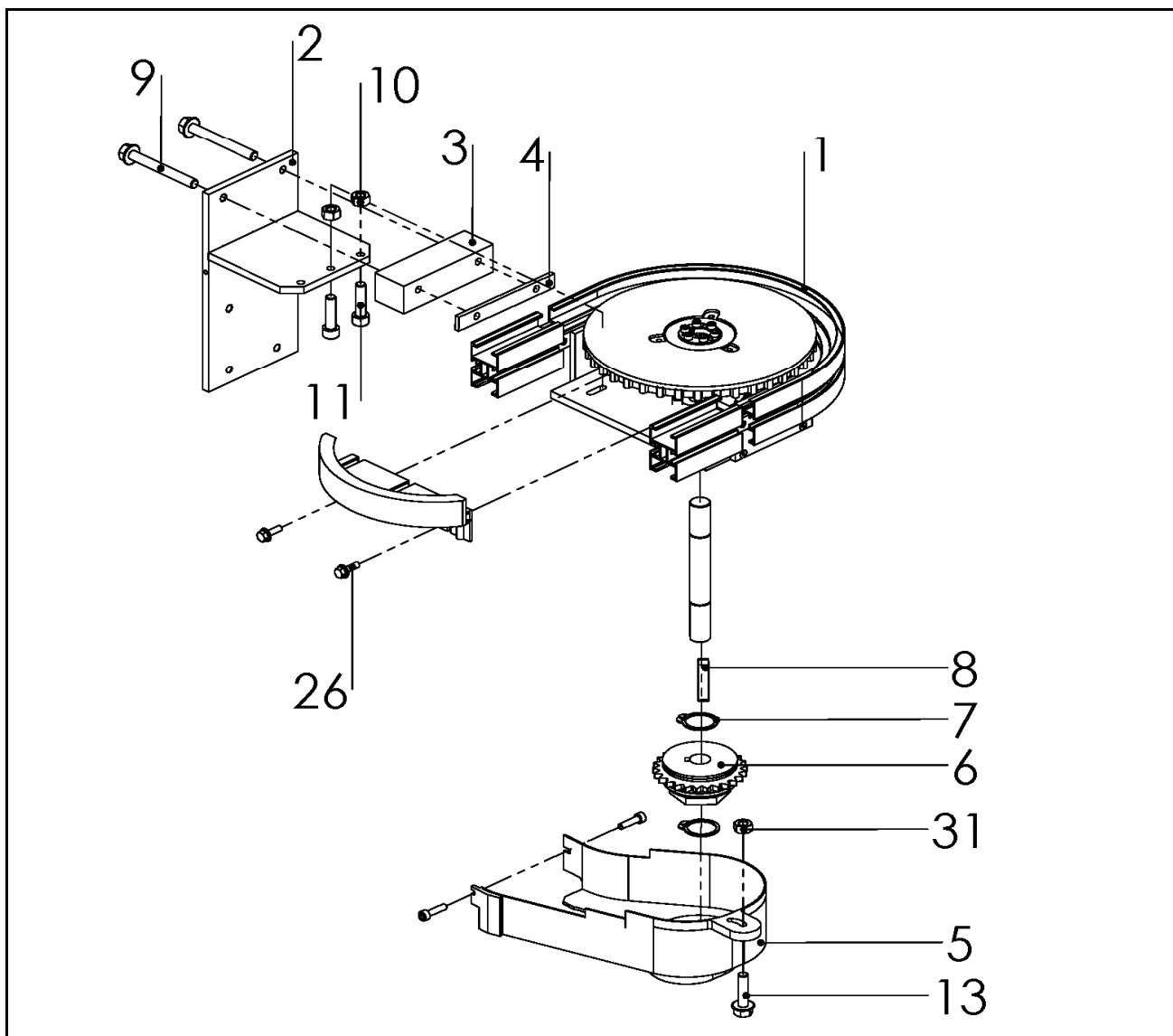
Basic unit-FSEW 180/0 HU



Item	Part No.	Description	Qty
1	F3925887	Bracket	1
2	F3902210	Drive wheel	1
3	FSBE 180R150	Outer horizontal bend	1
4	F3926717	Protective cover	1
5	F3926450	Shaft	1
6	F3926714	Transport cover	2
7	M8X16	Screw	2

Horizontal bend drive unit

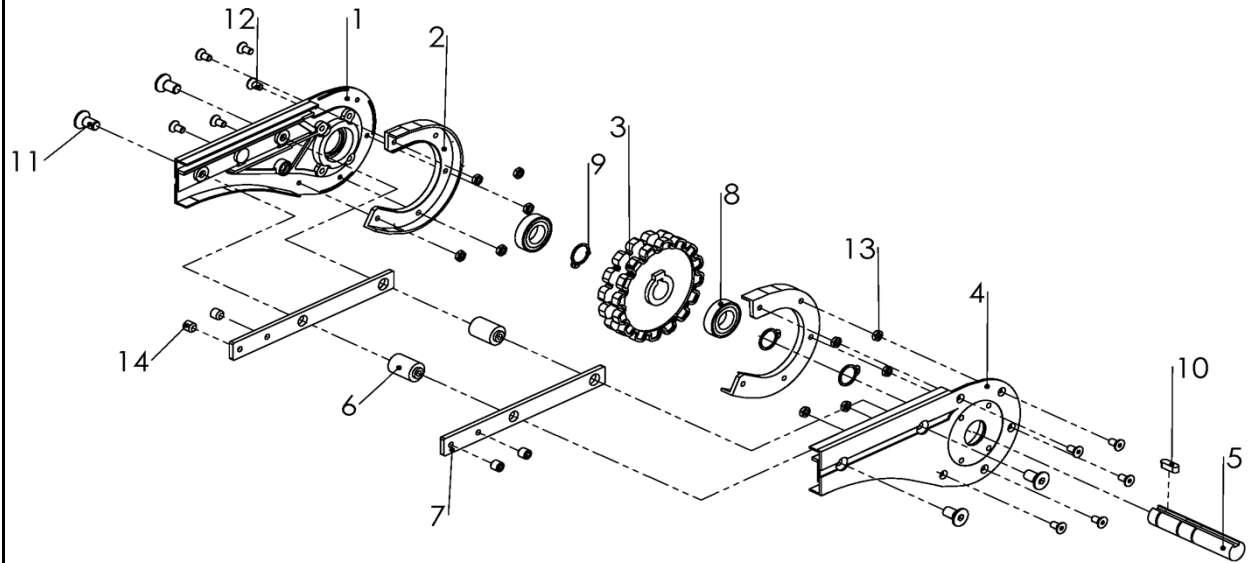
0-unit-FSEW 180/0 H



Item	Part No.	Description	Qty
1	FSEW 180/0 HU	Basic unit	1
2	F3926586	Bracket	1
3	F3903337	Spacer	1
4	F3903339	Nut bracket	1
5	F3906754	Transmission cover	1
6	F3904324	Slip clutch	1
7	C rings	Retaining ring	2
8	Wedge	8x7-40	1
9	M8X20	Screw	1
10	M8 Nut	Nut	2
11	M8X25	Screw	2
12	M5X16	Screw	4
13	M8X20	Screw	1
14	M8 Nut	Nut	1

FLEB 0HLGUA/0HRGUA

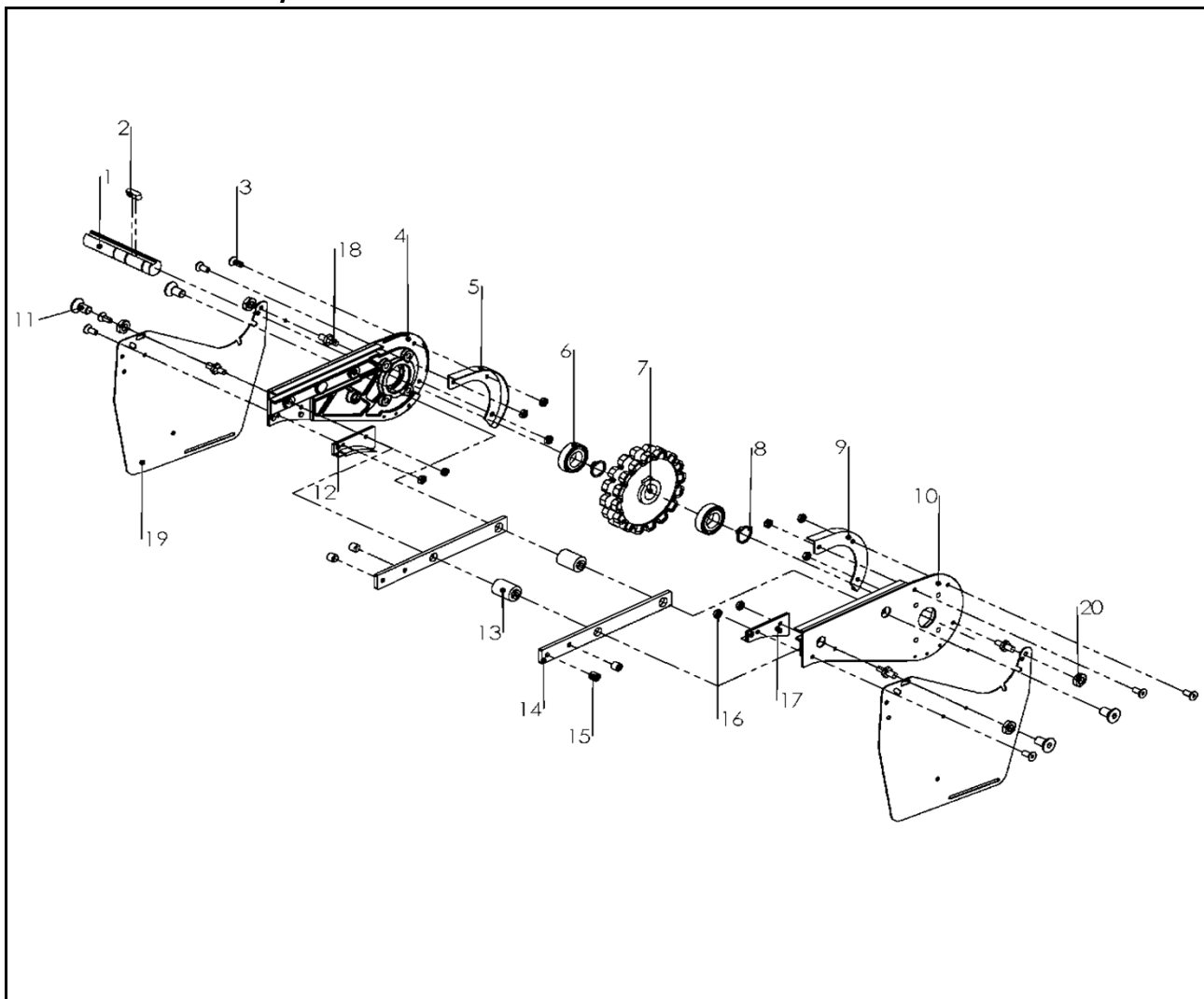
End drive unit,guided Basic unit



Item	Part No.	Description	Qty
1	F3921498A	Side plate L	1
2	F3924518A	Steering guide	2
3	F3920946A	Drive wheel	1
4	F3921497A	Side plate R	1
5	F3921124A	Drive Shaft	1
6	F3920947A	Spacer	2
7	F3921123A	Connecting strip	2
8	Bearing6005	Bearing	2
9	C rings	Retaining ring	2
10	key	8x7-30	1
11	M8X16	Screw	4
12	M5X10	Screw	10
13	M5 NUT	Screw	10
14	M8X8	Screw	4

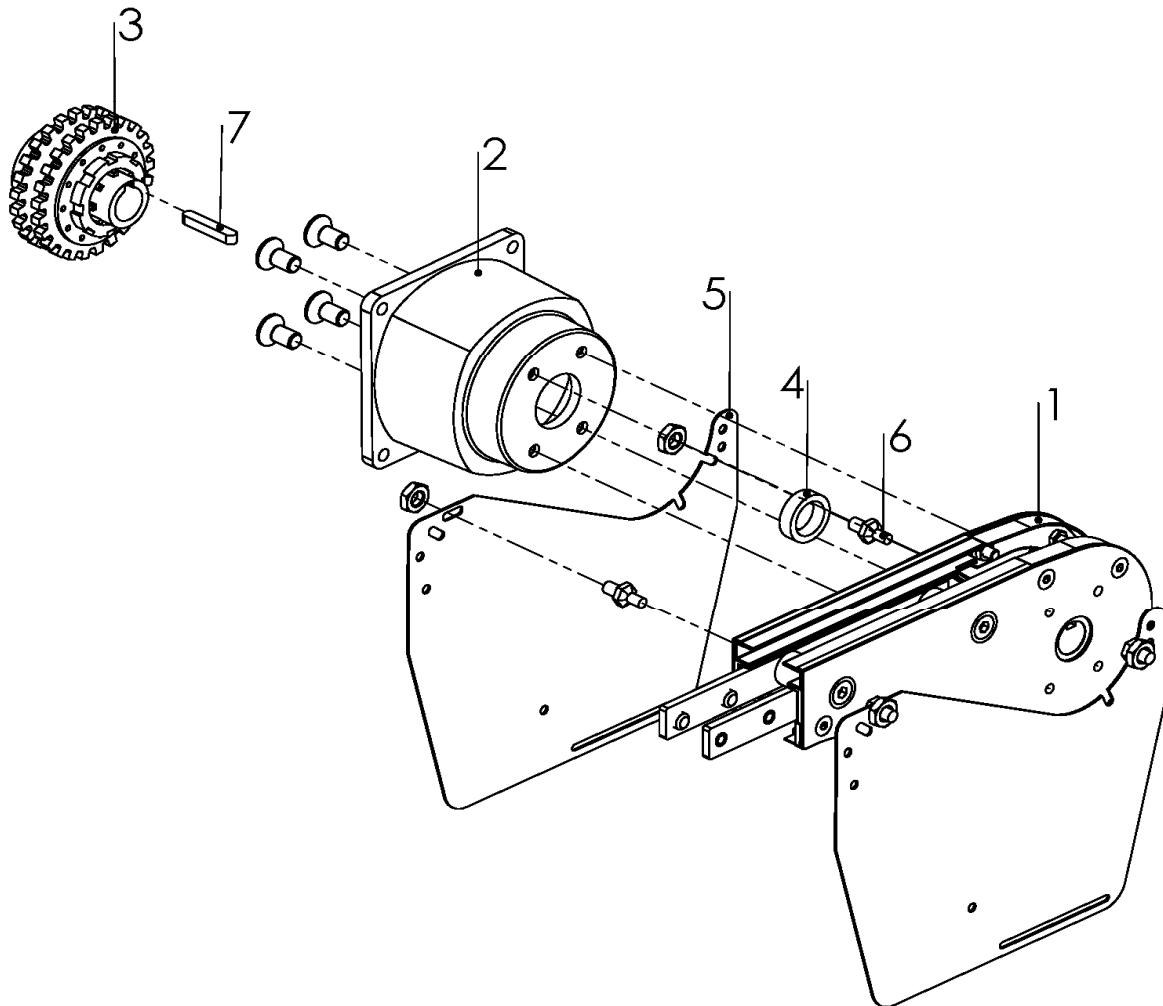
FLEB 0HLUA/0HRUA

End drive unit, Basic unit



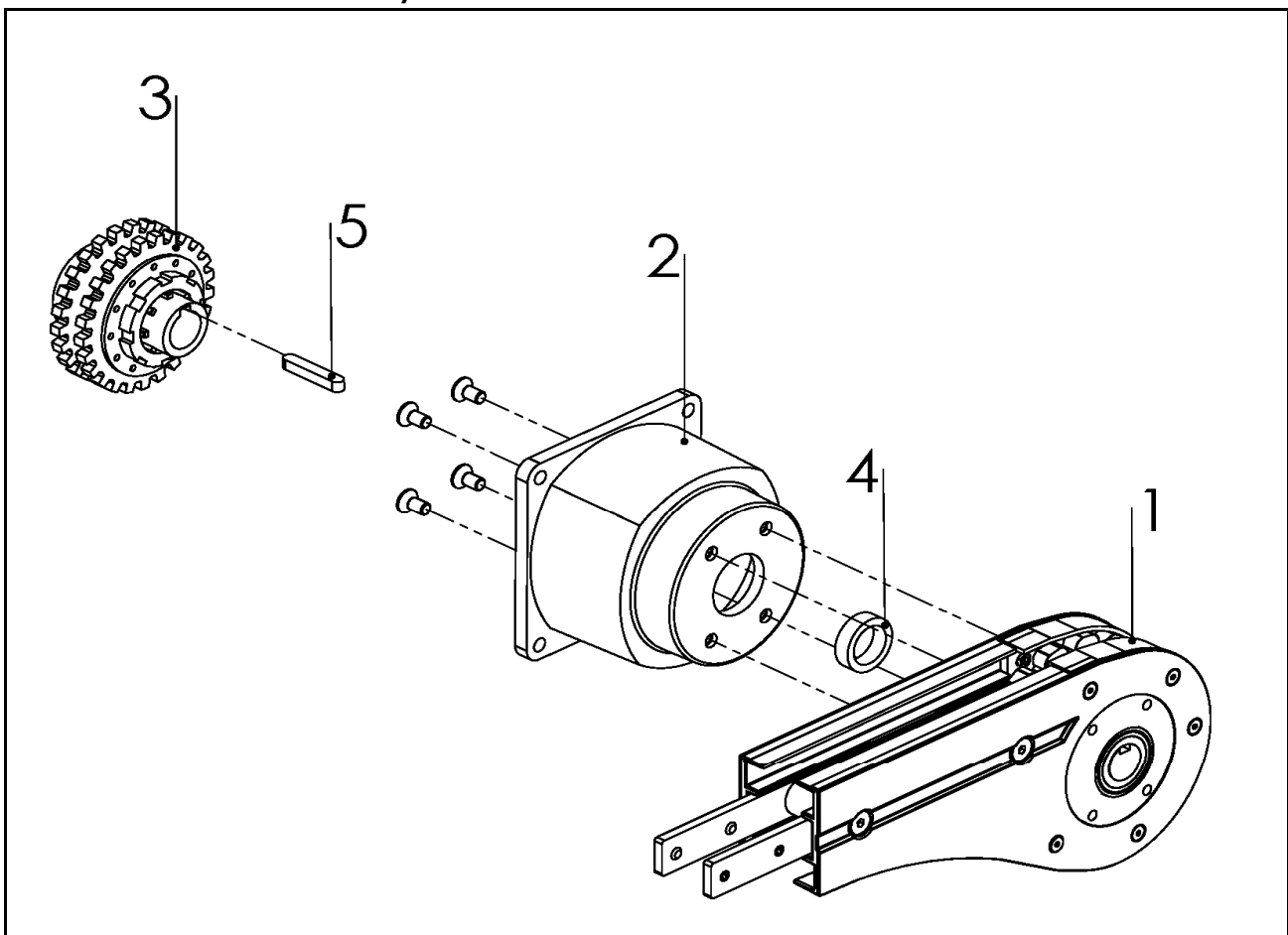
Item	Part No.	Description	Qty
1	F3921124A	Drive shaft	1
2	8x7-40 Key	Wedge	1
3	M5X10	Screw	10
4	F3920942A	Side plate L	1
5	F3920944A	Steering guide L	1
6	Bearing6005	Bearing	2
7	F3920946A	Drive wheel	1
8	C rings	Retaining ring	2
9	F3920945A	Steering guide R	1
10	F3920943A	Side plate R	1
11	M8X20	Screw	4
12	F3905774A	Guide-L	1
13	F3920947A	Spacer	2
14	F3921123A	Connecting strip	2
15	M8X20	Screw	4
16	M5 Nut	Screw	10
17	F3902303A	Guide-R	1
18	F3925718	Screw	4
19	F3925673	Slack Protection	2
20	M8 Nut	Nut	4

End drive unit, direct drive 0-unit-FLEB 0HLP/HRPA



Item	Part No.	Description	Qty
1	FLEB 0HLUA	Basic unit (left-hand version)	1
	FLEB 0HRUA	Basic unit (right-hand version)	1
2	F3920084	Flange	1
3	F5054003	Slip clutch $\Phi 20$ - $\Phi 25$ mm	1
4	F3921652	Distance ring	1
5	F3925673	Slack protection	1
6	F3925718	Screw	4
7	Wedge	8x7-40	1

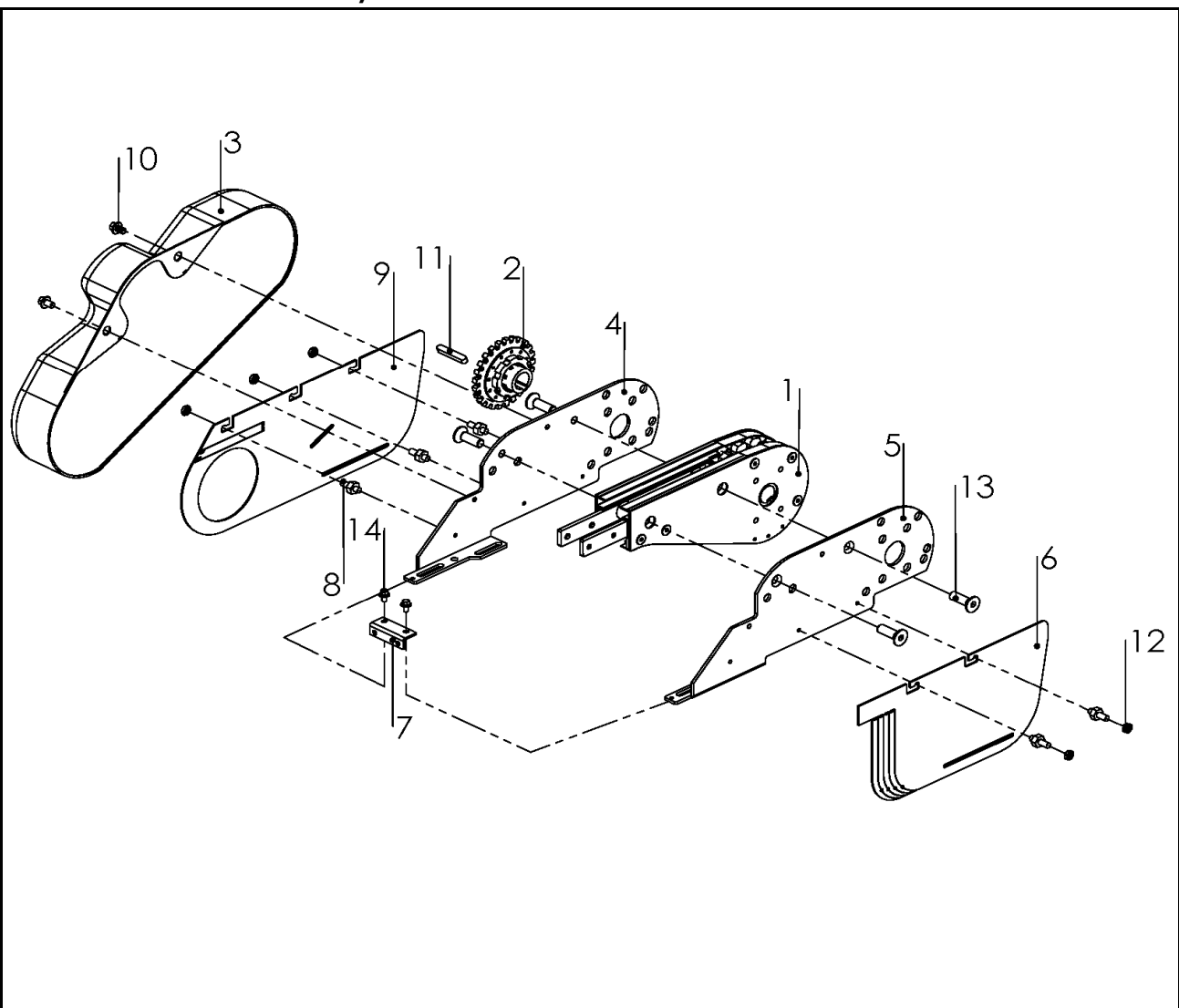
End drive unit, direct drive 0-unit-FLEB 0HLGP/HRGP



Item	Part No.	Description	Qty
1	FLEB 0HLGUA	Basic unit (left-hand version)	1
	FLEB 0HRGUA	Basic unit (right-hand version)	1
2	F3920084	Flange	1
3	F5054003	Slip clutch $\Phi 20$ - $\Phi 25$ mm	1
4	F3921652	Distance ring	1
5	Wedge	8x7-40	1

End drive unit

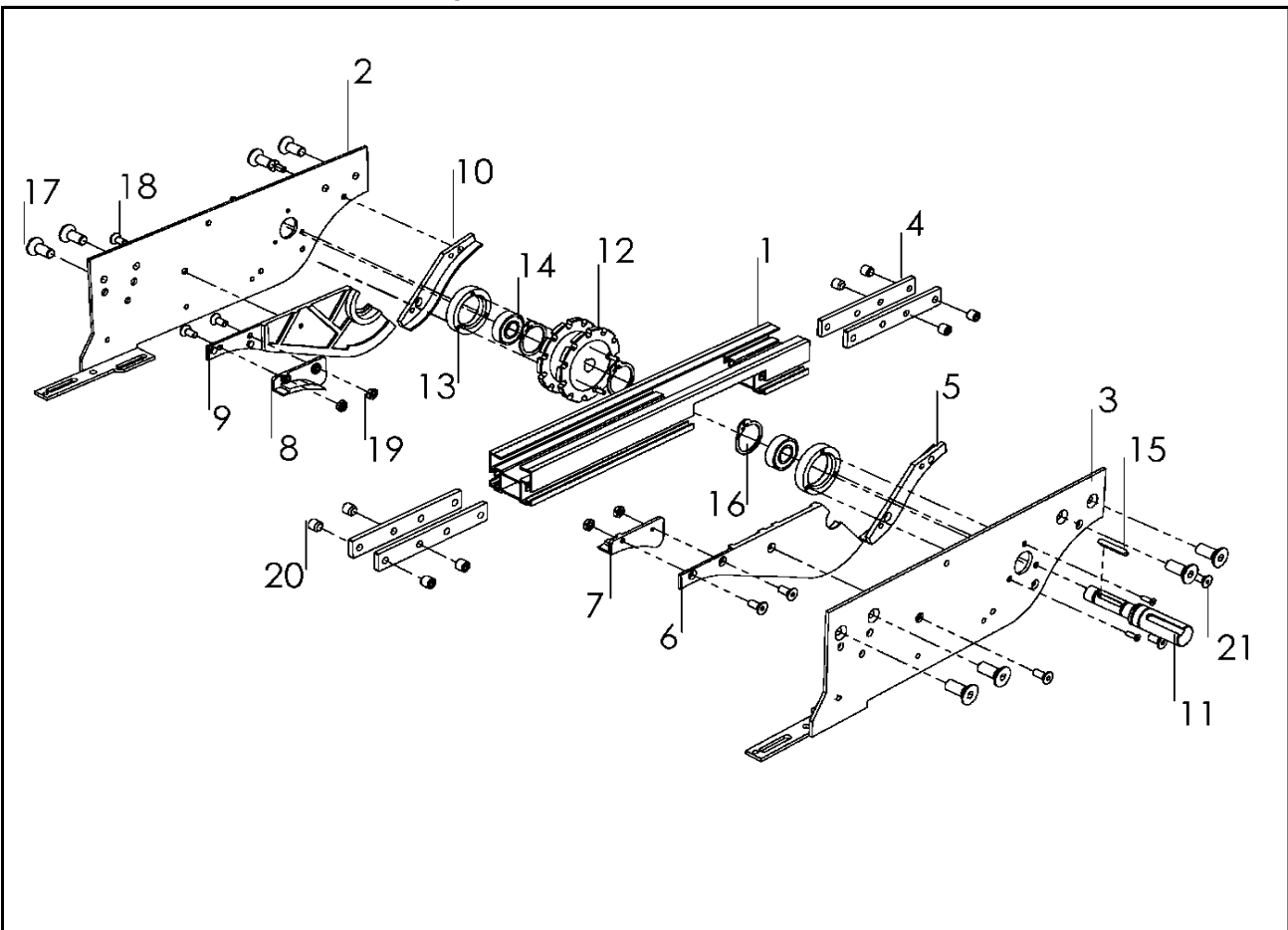
0-unit-FLEB 0 HLA/HRA



Item	Part No.	Description	Qty
1	FLEB 0 HLUA	Basic unit (left-hand version)	1
	FLEB 0 HRUA	Basic unit (right-hand version)	1
2	F3904324	Slip clutchΦ25mm	1
3	F3904431A	Transmission cover	1
4	F3921104A	Motor bracket L	1
5	F3921103A	Motor bracket R	1
6	F3904665A	Slack protection R	1
7	F3921105A	Adjusting block	1
8	F3904862	Screw	5
9	F3904666A	Slack protection L	1
10	F3904855	Screw	2
11	Key 8x7-25	Wedge	1
12	M5 Nut	Nut	5
13	M8X20	Screw	4
14	M5x8	Screw	2

Intermediate drive unit

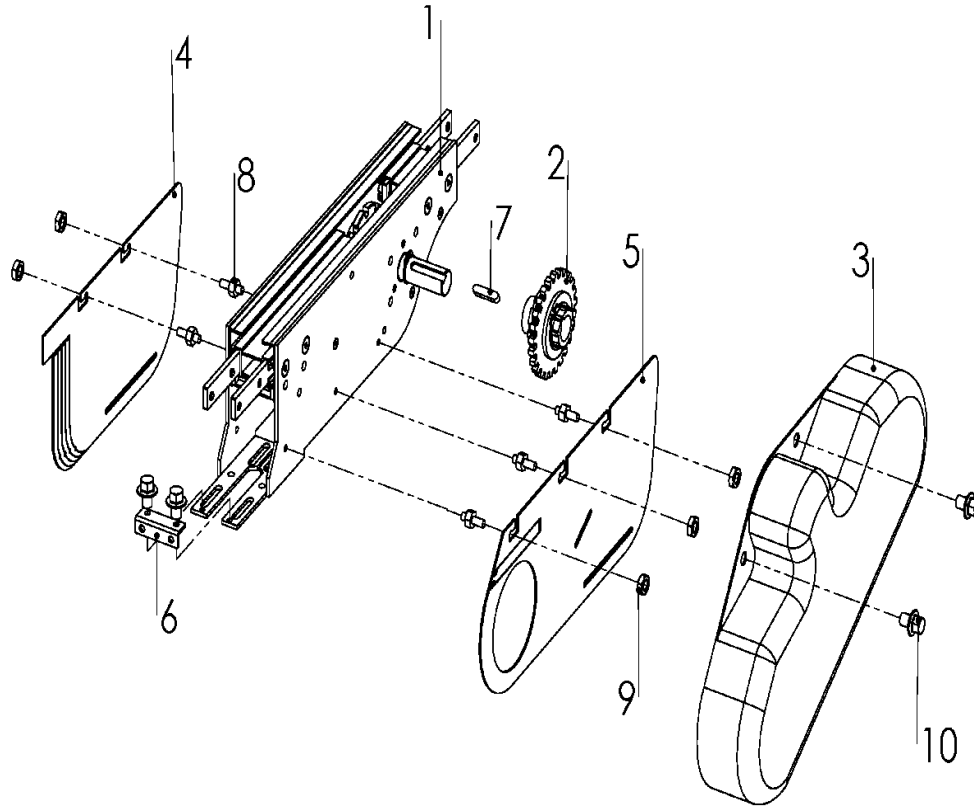
Basic unit-FLER 0 HLU/HRU



Item	Part No.	Description	Qty
1	FLER-Beam	Beam	1
2	F3903334	Side plate L	1
3	F3903333	Side plate R	1
4	FLCJ 6X160	Connecting strip	4
5	F3903370	Steering guide R	1
6	F3920943B	Side plate R	1
7	F3902303A	Guide R	1
8	F3905774A	Guide L	1
9	F3920942B	Side plate L	1
10	F3905773	Steering guide L	1
11	F3926773	Drive Shaft	1
12	F3904292	Drive Wheel	1
13	Bearing house	Bearing house for bearing 6203	2
14	Bearing 6203	Bearing	2
15	Key 8X8X25	Wedge	1
16	C Rings	Retaining ring	2
17	M8X20	Screw	8
18	M5X12	Screw	12
19	M5XNut	Nut	4
20	M8X8	Screw	8
21	M3X12	Screw	6

Intermediate drive unit

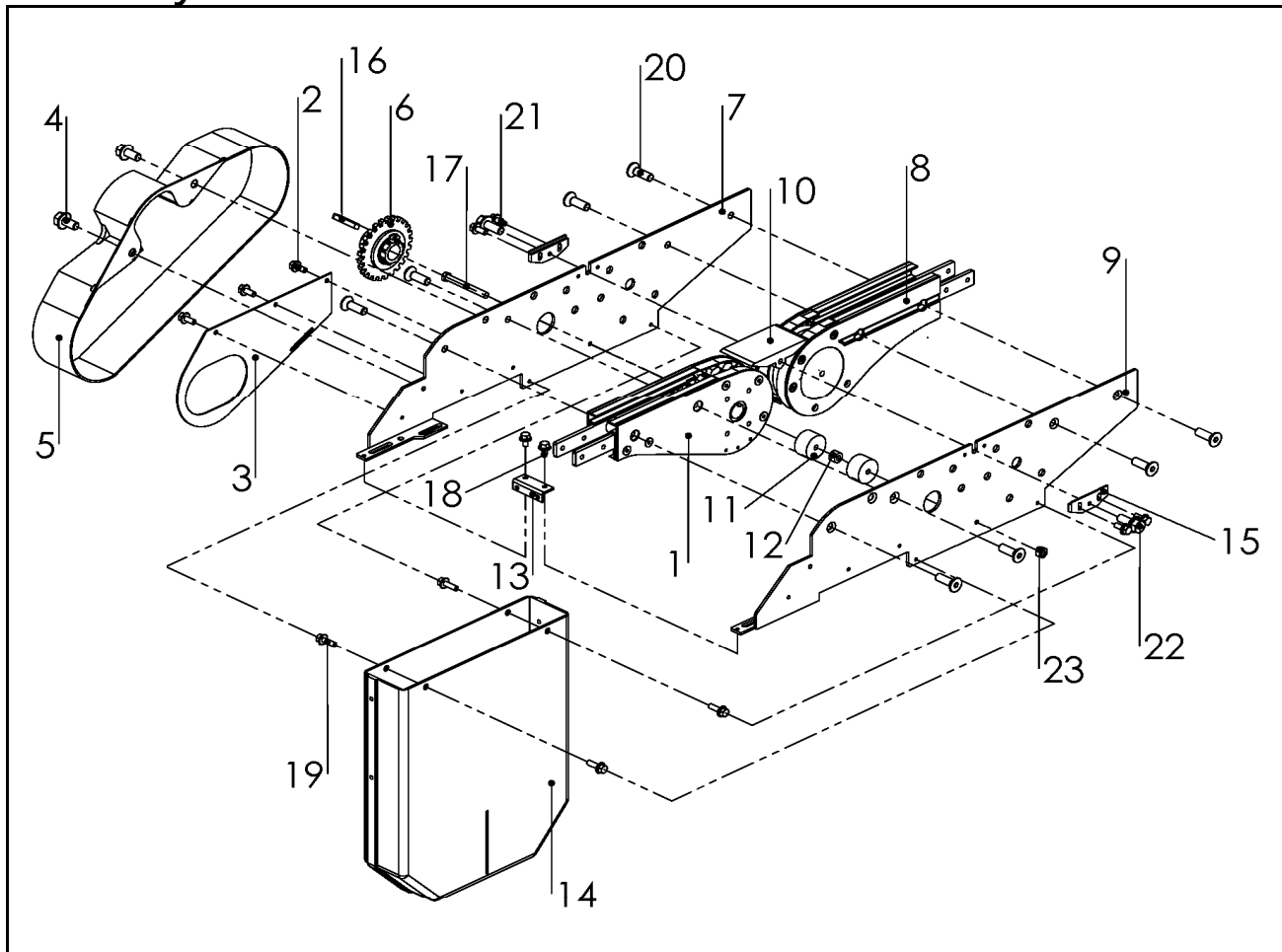
0-unit - FLER 0 HL/HR



Item	Part No.	Description	Qty
1	FLER 0 HLU	Basic unit (left-hand version)	1
	FLER 0 HRU	Basic unit (right-hand version)	1
2	F3904324	Slip clutch $\Phi 25\text{mm}$	1
3	F3904431A	Transmission cover	1
4	F3904665A	Slack protection	1
5	F3904666A	Slack protection	1
6	F3921105A	Adjusting block	1
7	Key 8x7-35	Wedge	1
8	F3904862	Screw	5
9	M5 Nut	Nut	5
10	F3904855	Screw	2

FLEC OHL/0HR

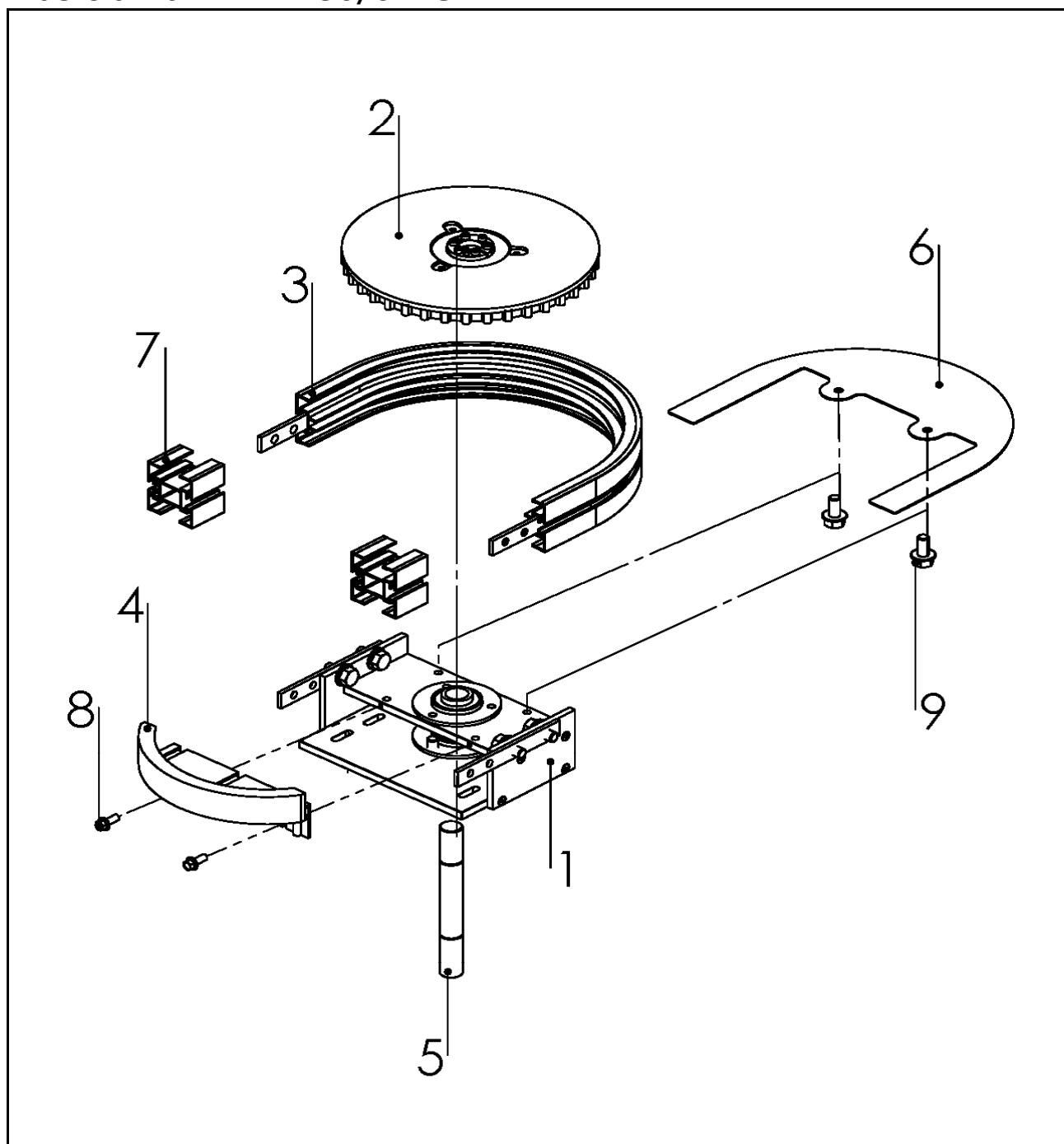
Catenary drive unit 0-unit



Item	Part No.	Description	Qty
1	FLEB OHLUA	Basic unit (left hand version)	1
	FLEB OHRUA	Basic unit (right hand version)	
2	F3904862	Screw	3
3	F3904847	Chain guard	1
4	F3904855	Screw	2
5	F3904431	Transmission cover	1
6	F3904324	Slip clutch $\Phi 25\text{mm}$	1
7	F3921109	Motor bracket L	1
8	F3921400	Idler unit	1
9	F3921108	Motor bracket R	1
10	F3921454	Bridge	1
11	F3920087	Support roller	2
12	F3920086	Distance piece	1
13	F3921105A	Adjusting block	1
14	F3921636	Cover	1
15	F3905278	Adjustment plate	2
16	Key	Wedge 8X7-25	1
17	M6X125	Screw	1
18	M5X8	Screw	2
19	M5X16	Screw	4
20	M8X25	Screw	8
21	M5X12	Screw	4
22	M8X20	Screw	2
23	M6 NUT	Screw	1

Horizontal bend drive unit

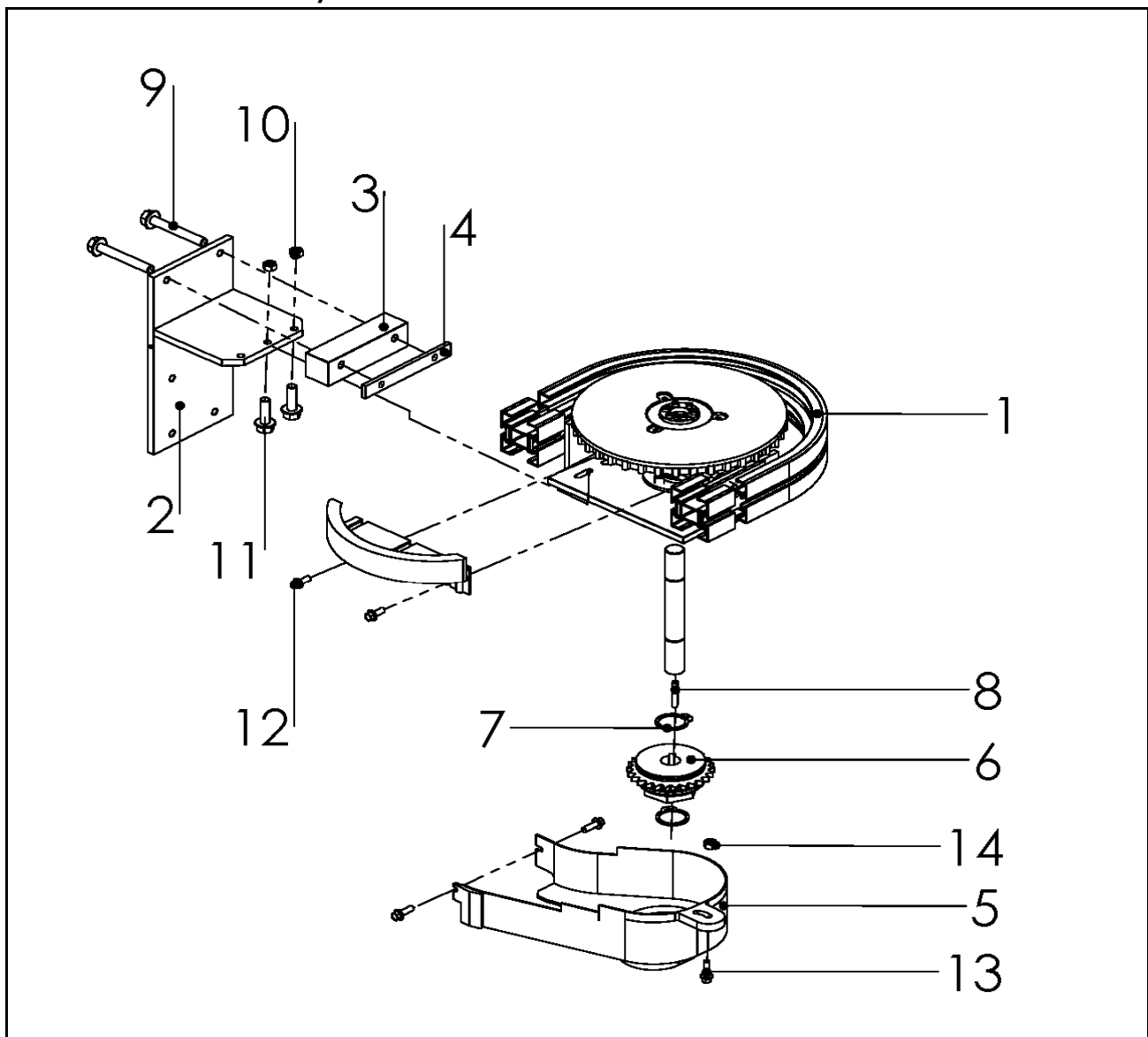
Basic unit-FLEW 180/0 HU



Item	Part No.	Description	Qty
1	F3926575	Bracket	1
2	F3902210	Drive wheel	1
3	FLBE 180R150	Outer horizontal bend	1
4	F3926718	Protective cover	1
5	F3926450	Shaft	1
6	F3927392	Cover	1
7	F3926585	Transport cover	2
8	M5X16	Screw	2
9	M8X16	Screw	2

Horizontal bend drive unit

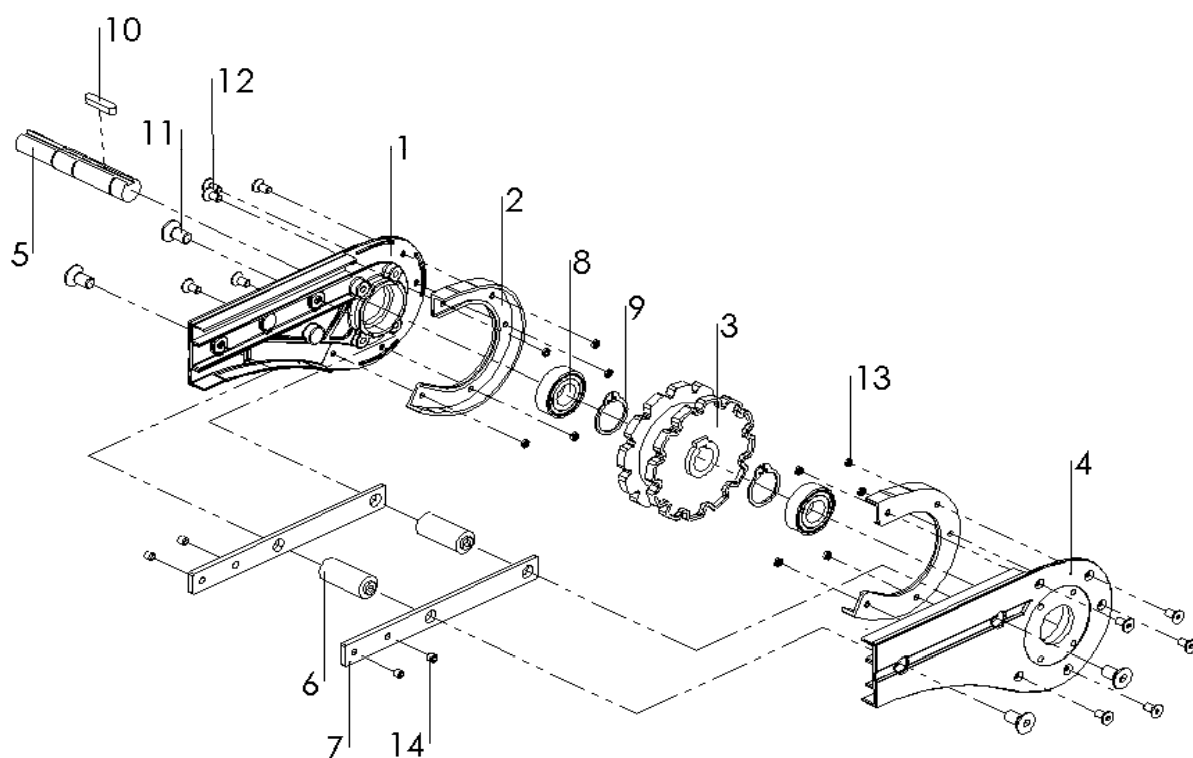
0-unit-FLEW 180/0 H



Item	Part No.	Description	Qty
1	FLEW 180/0 HU	Basic unit	1
2	F3926586	Bracket	1
3	F3926755	Spacer	1
4	F3903339	Nut bracket	1
5	F3926754	Transmission cover	1
6	F3904324	Slip clutch	1
7	C rings	Retaining ring	2
8	Wedge	8x7-40	1
9	M8X60	Screw	1
10	M8 Nut	Nut	2
11	M8X25	Screw	2
12	M5X13	Screw	4
13	M8x20	Screw	1
14	M8 Nut	Nut	1

FMEB 0HLGUA/0HRGUA

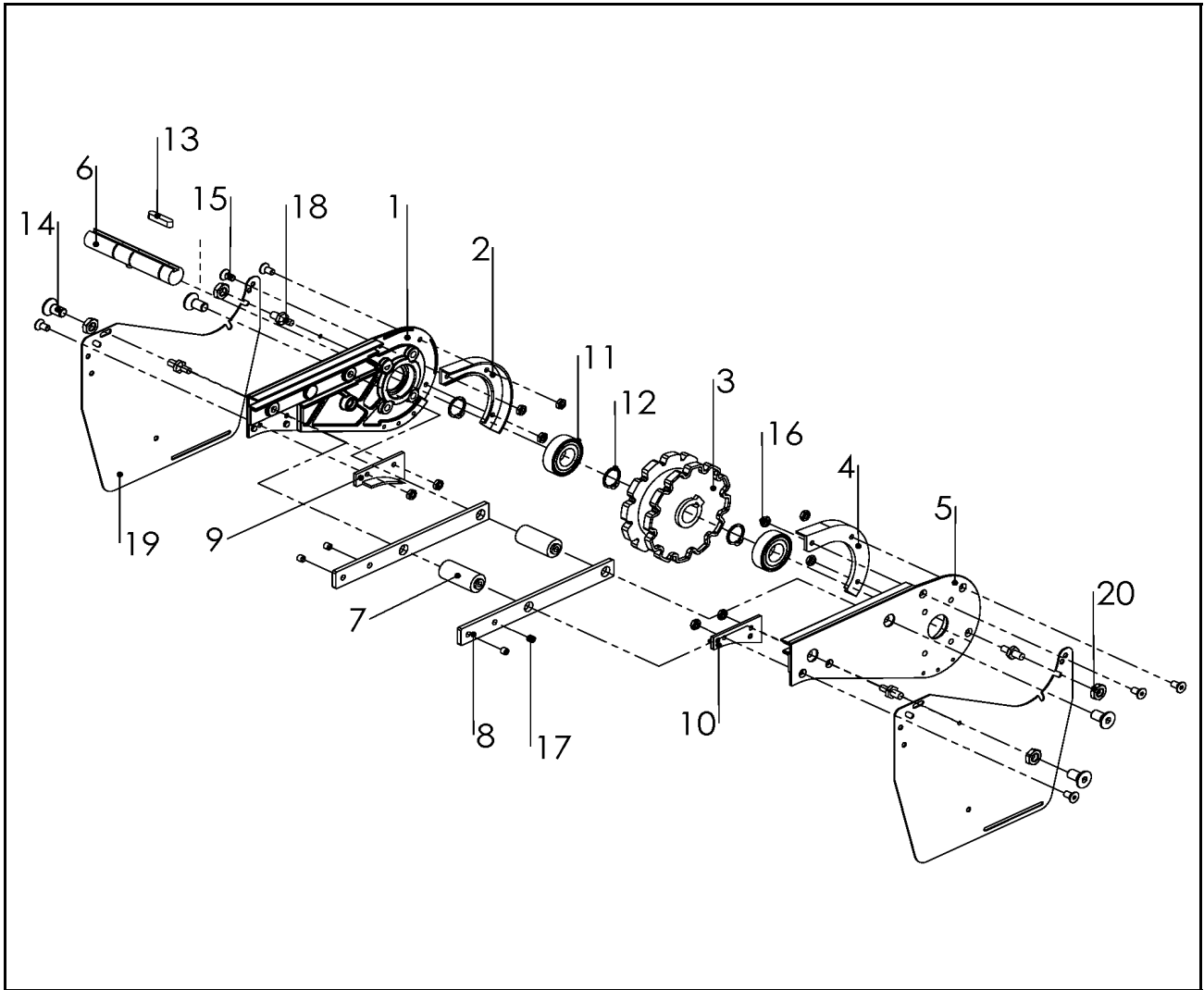
End drive unit,guided Basic unit



Item	Part No.	Description	Qty
1	F3921675A	Side plate L	1
2	F3924519A	Steering guide	1
3	F3904457A	Drive wheel	1
4	F3921674A	Side plate R	1
5	F3904459A	Drive Shaft	1
6	F3904440A	Spacer	2
7	F3921123A	Connecting strip	2
8	Bearing6205	Bearing	2
9	C rings	Retaining ring	2
10	Key	8x7-40	1
11	M8X16	Screw	4
12	M5X10	Screw	10
13	M5 NUT	Screw	10
14	M8X8	Screw	4

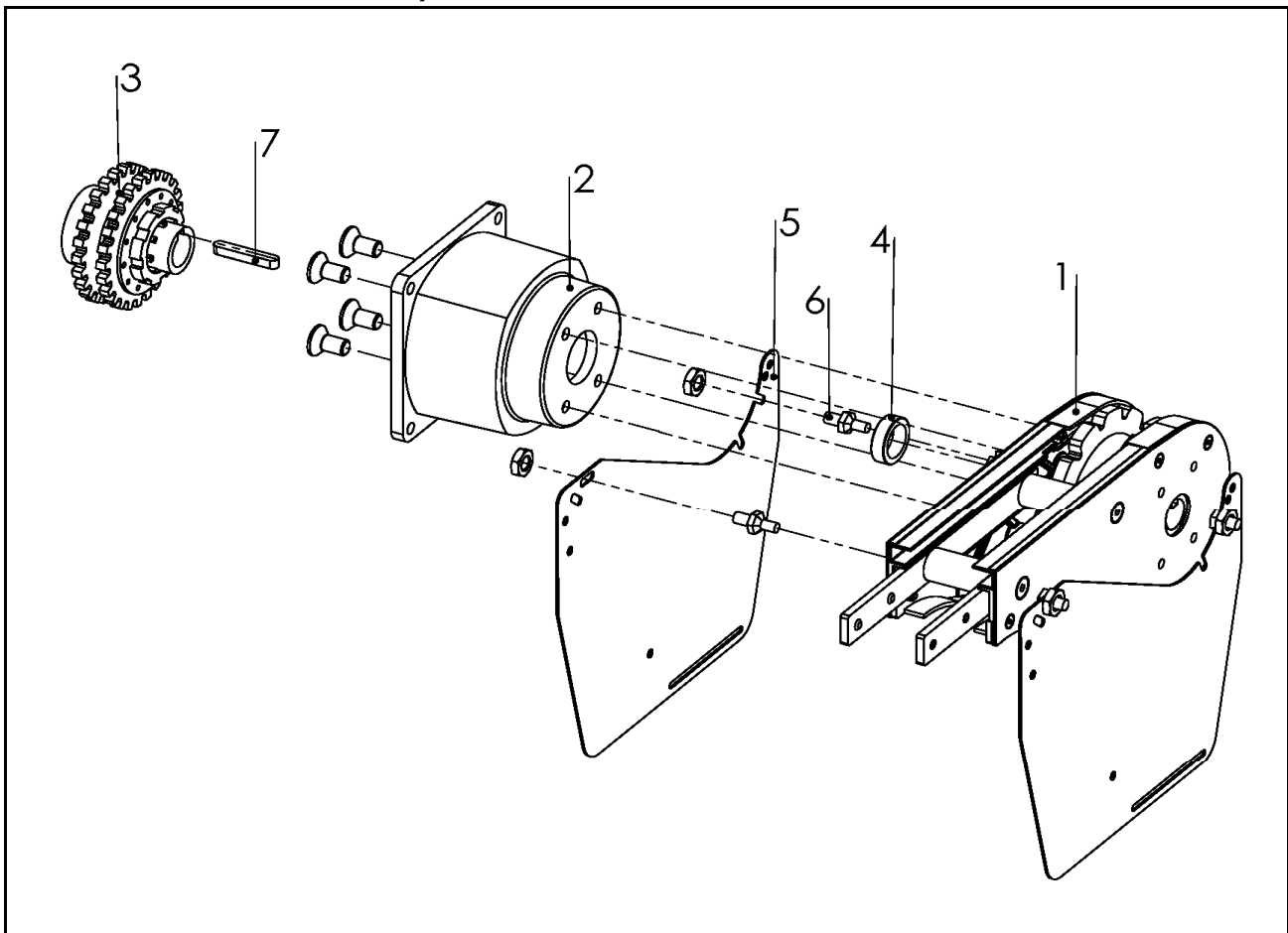
FMEB 0HLUA/0HRUA

End drive unit, Basic unit



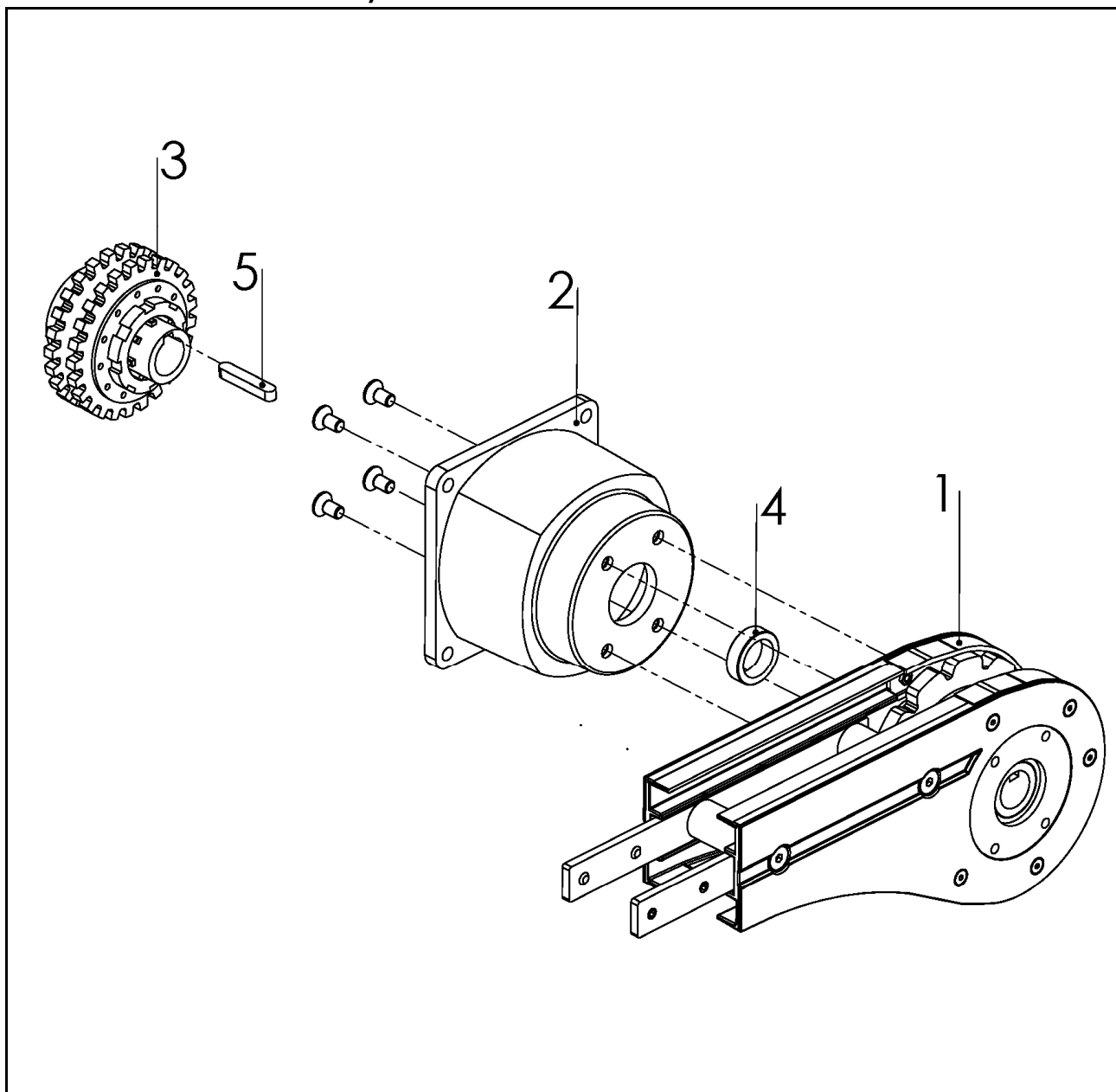
Item	Part No.	Description	Qty
1	F3904741A	Side plate L	1
2	F3904743A	Steering guide L	1
3	F3904457A	Drive wheel	1
4	F3904455A	Steering guide R	1
5	F3904458A	Side plate R	1
6	F3904459A	Drive Shaft	1
7	F3904440A	Spacer	2
8	F3921123A	Connecting strip	2
9	F3904742A	Guide-L	1
10	F3904456A	Guide-R	1
11	Bearing6205	Bearing	2
12	Retaining ring	Sga25	2
13	Key	8x7-40	1
14	M8X16	Screw	4
15	M5X10	Screw	10
16	M5 NUT	Screw	10
17	M8X8	Screw	4
18	F3925718	Screw	4
19	F3925673	Slack Protection	2
20	M8 Nut	Nut	4

End drive unit, direct drive 0-unit-FMEB 0HLPA/HRPA



Item	Part No.	Description	Qty
1	FMEB 0HLUA	Basic unit (left-hand version)	1
	FMEB 0HRUA	Basic unit (right-hand version)	1
2	F3920084	Flange	1
3	F5054003	Slip clutch $\Phi 20$ - $\Phi 25$ mm	1
4	F3921652	Distance ring	1
5	F3925673	Slack protection	1
6	F3925718	Screw	4
7	Wedge	8x7-40	1

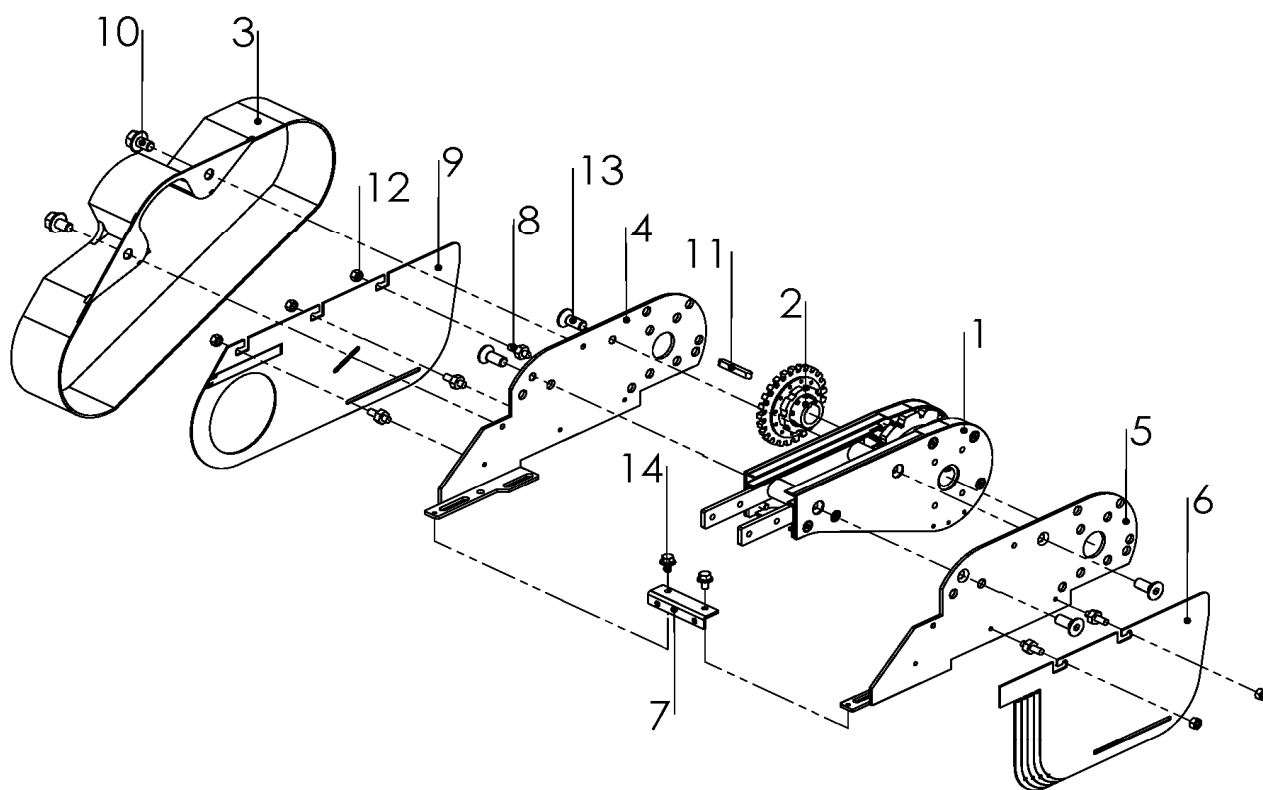
End drive unit, direct drive 0-unit-FMEB 0HLGP/HRGP



Item	Part No.	Description	Qty
1	FMEB 0HLGUA	Basic unit (left-hand version)	1
	FMEB 0HRGUA	Basic unit (right-hand version)	1
2	F3920084	Flange	1
3	F5054003	Slip clutch $\Phi 20$ - $\Phi 25$ mm	1
4	F3921652	Distance ring	1
5	Wedge	8x7-40	1

End drive unit

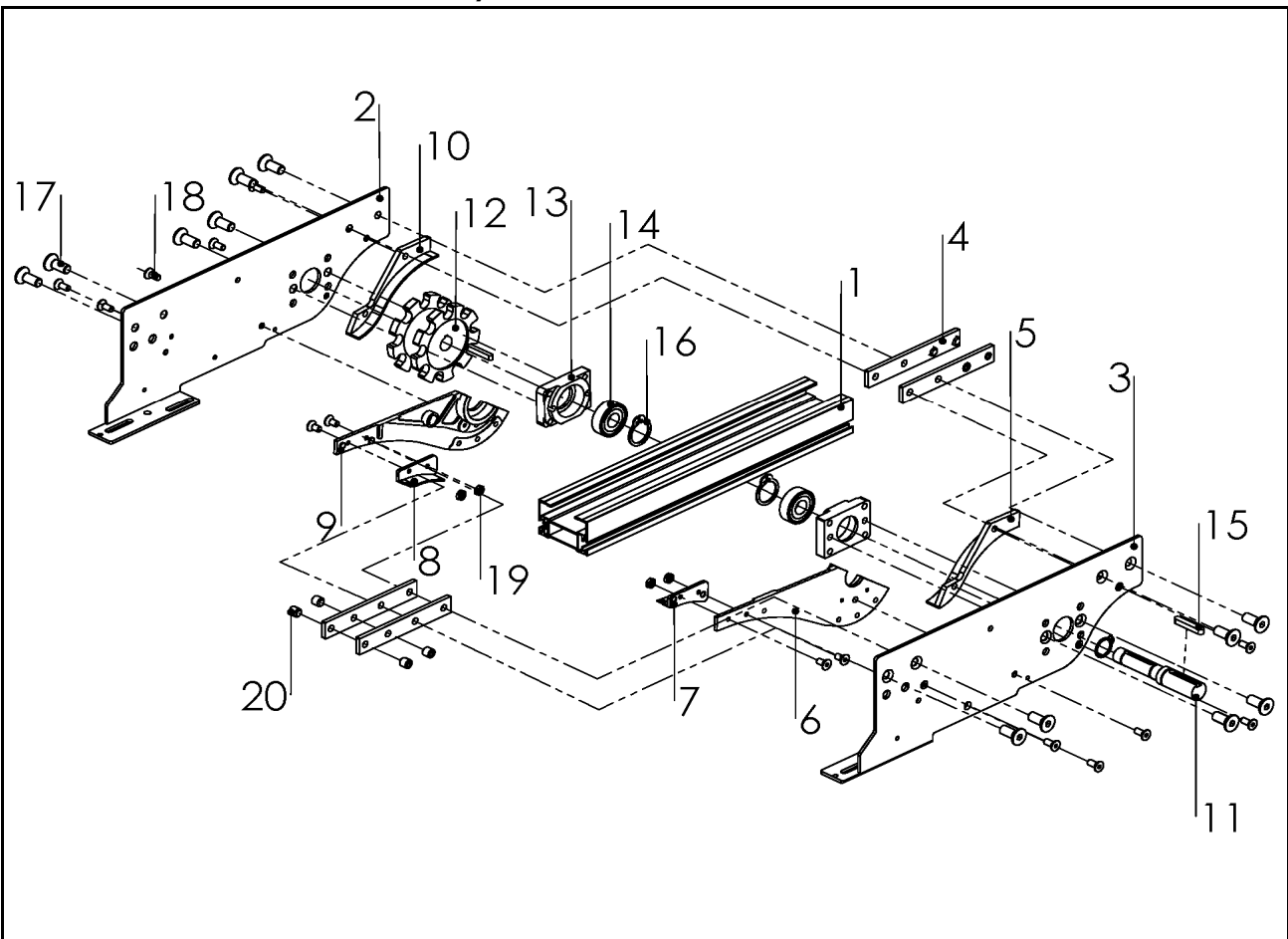
0-unit-FMEB 0 HLA/HRA



Item	Part No.	Description	Qty
1	FMEB 0 HLUA	Basic unit (left-hand version)	1
	FMEB 0 HRUA	Basic unit (right-hand version)	1
2	F3904324	Slip clutchΦ25mm	1
3	F3904431A	Transmission cover	1
4	F3904632A	Motor bracket L	1
5	F3904633A	Motor bracket R	1
6	F3904665A	Slack protection R	1
7	F3924288A	Adjusting block	1
8	F3904862	Screw	5
9	F3904666A	Slack protection L	1
10	F3904855	Screw	2
11	Key 8x7-25	Wedge	1
12	M5 Nut	Nut	5
13	M8X20	Screw	4
14	M5x8	Screw	2

Intermediate drive unit

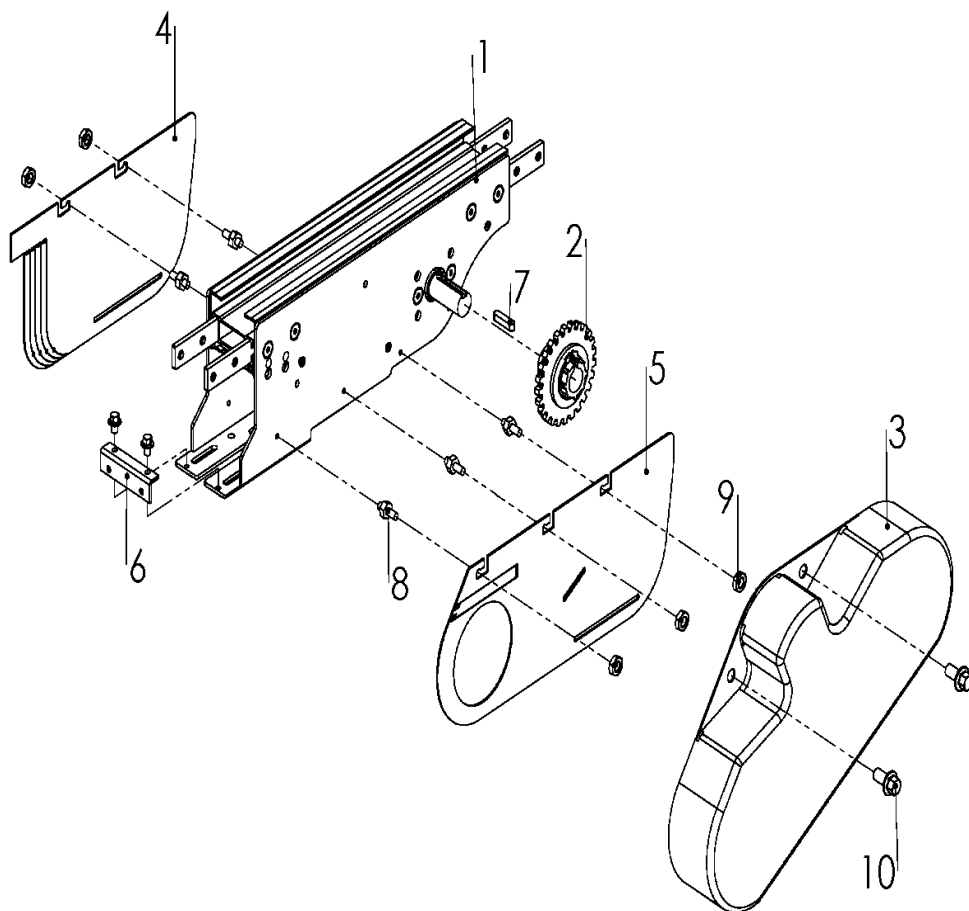
Basic unit-FMER 0 HLU/HRU



Item	Part No.	Description	Qty
1	F3927125	Beam	1
2	F3927121	Side plate L	1
3	F3927122	Side plate R	1
4	FLCJ 6X160	Connecting strip	4
5	F3902901	Steering guide R	1
6	F3927126	Side plate R	1
7	F3904456A	Guide R	1
8	F3904742A	Guide L	1
9	F3927127	Side plate L	1
10	F3924630	Steering guide L	1
11	F3926782	Drive Shaft	1
12	F3902811	Drive Wheel	1
13	F3927119	Bearing house	2
14	Bearing 6204	Bearing	2
15	Key 8X8X35	Wedge	1
16	C Rings	Retaining ring	2
17	M8X20	Screw	12
18	M5X12	Screw	10
19	M5XNut	Nut	4
20	M8X8	Screw	8

Intermediate drive unit

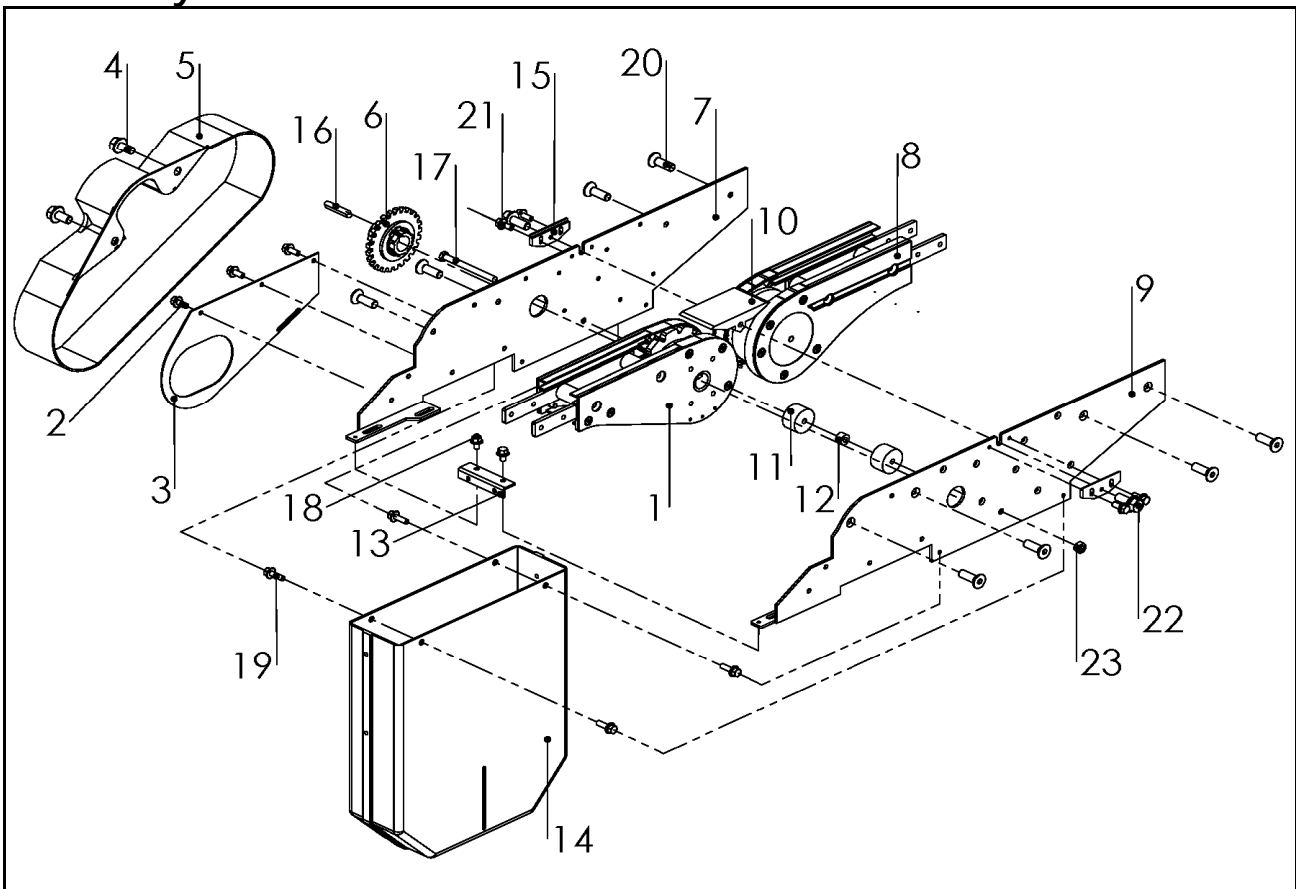
0-unit - FMER 0 HL/HR



Item	Part No.	Description	Qty
1	FMER 0 HLU	Basic unit (left-hand version)	1
	FMER 0 HRU	Basic unit (right-hand version)	1
2	F3904324	Slip clutch $\Phi 25\text{mm}$	1
3	F3904431A	Transmission cover	1
4	F3904665A	Slack protection	1
5	F3904666A	Slack protection	1
6	F3924288A	Adjusting block	1
7	Key 8x7-35	Wedge	1
8	F3904862	Screw	5
9	M5 Nut	Nut	5
10	F3904855	Screw	2

FMEC 0HL/0HR

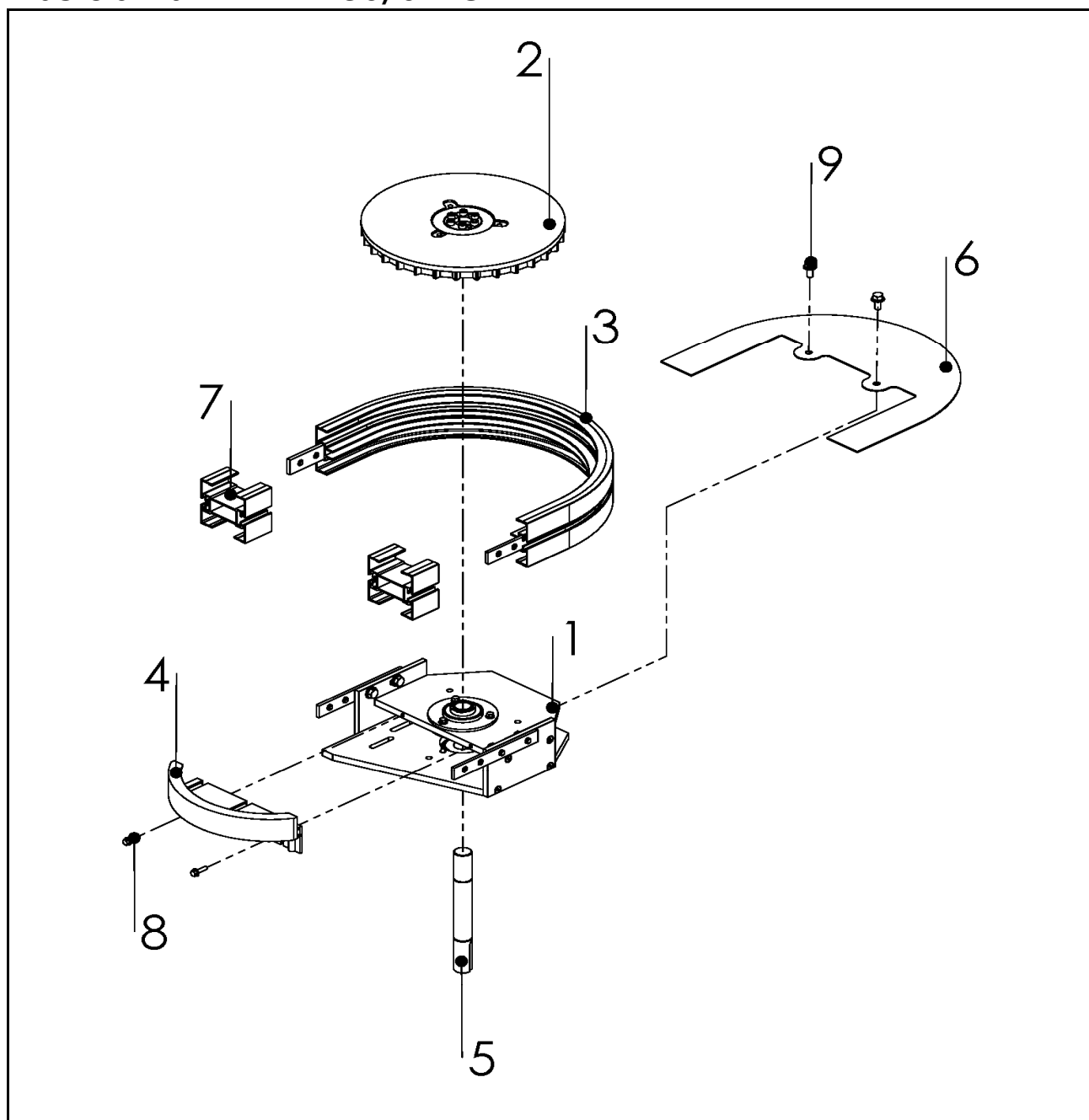
Catenary drive unit 0-unit



Item	Part No.	Description	Qty
1	FMEB 0HLUA	Basic unit	1
	FMEB 0HRUA	Basic unit	1
2	F3904862	Screw	3
3	F3904847	Chain guard	1
4	F3904855	Screw	2
5	F3904431	Transmission cover	1
6	F3904324	Slip clutch $\Phi 25\text{mm}$	1
7	F3921461	Motor bracket L	1
8	F3921478	Idler unit	1
9	F3921462	Motor bracket R	1
10	F3924489	Bridge	1
11	F3920087	Support roller	2
12	F3920012	Distance piece	1
13	F3924288A	Adjusting block	1
14	F3902913	Cover	1
15	F3905278	Adjustment plate	2
16	Key	Wedge 8X7-25	1
17	M6X90	Screw	1
18	M5X8	Screw	2
19	M5X16	Screw	4
20	M8X25	Screw	8
21	M5X12	Screw	4
22	M8X20	Screw	2
23	M6 Nut	Nut	1

Horizontal bend drive unit

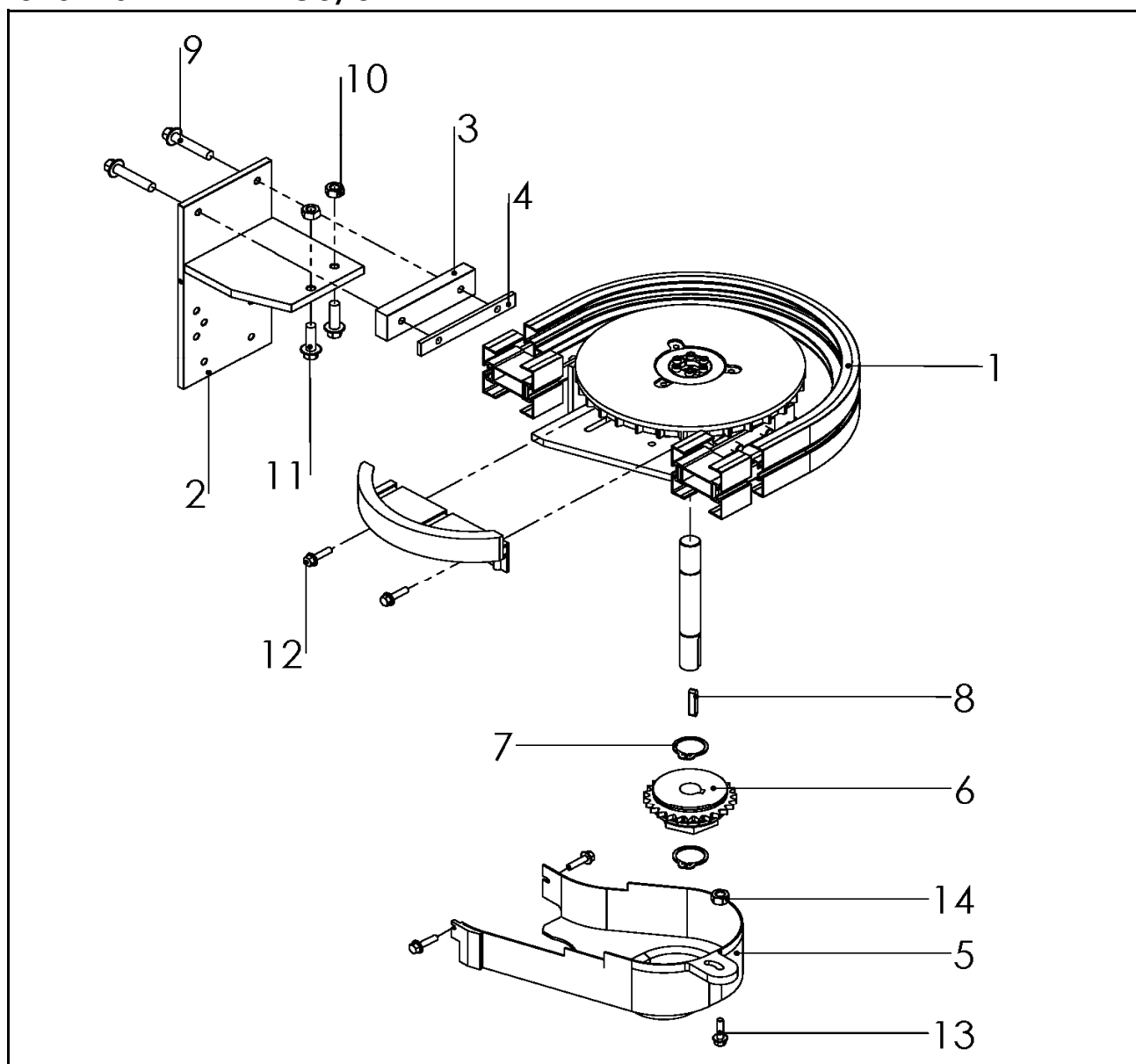
Basic unit-FMEW 180/0 HU



Item	Part No.	Description	Qty
1	F3926575	Bracket	1
2	F3902723	Drive wheel	1
3	FMBE 180R160	Outer horizontal bend	1
4	F3926718	Protective cover	1
5	F3926450	Shaft	1
6	F3927393	Cover	1
7	F3926715	Transport cover	2
8	M5X16	Screw	2
9	M8X16	Screw	2

Horizontal bend drive unit

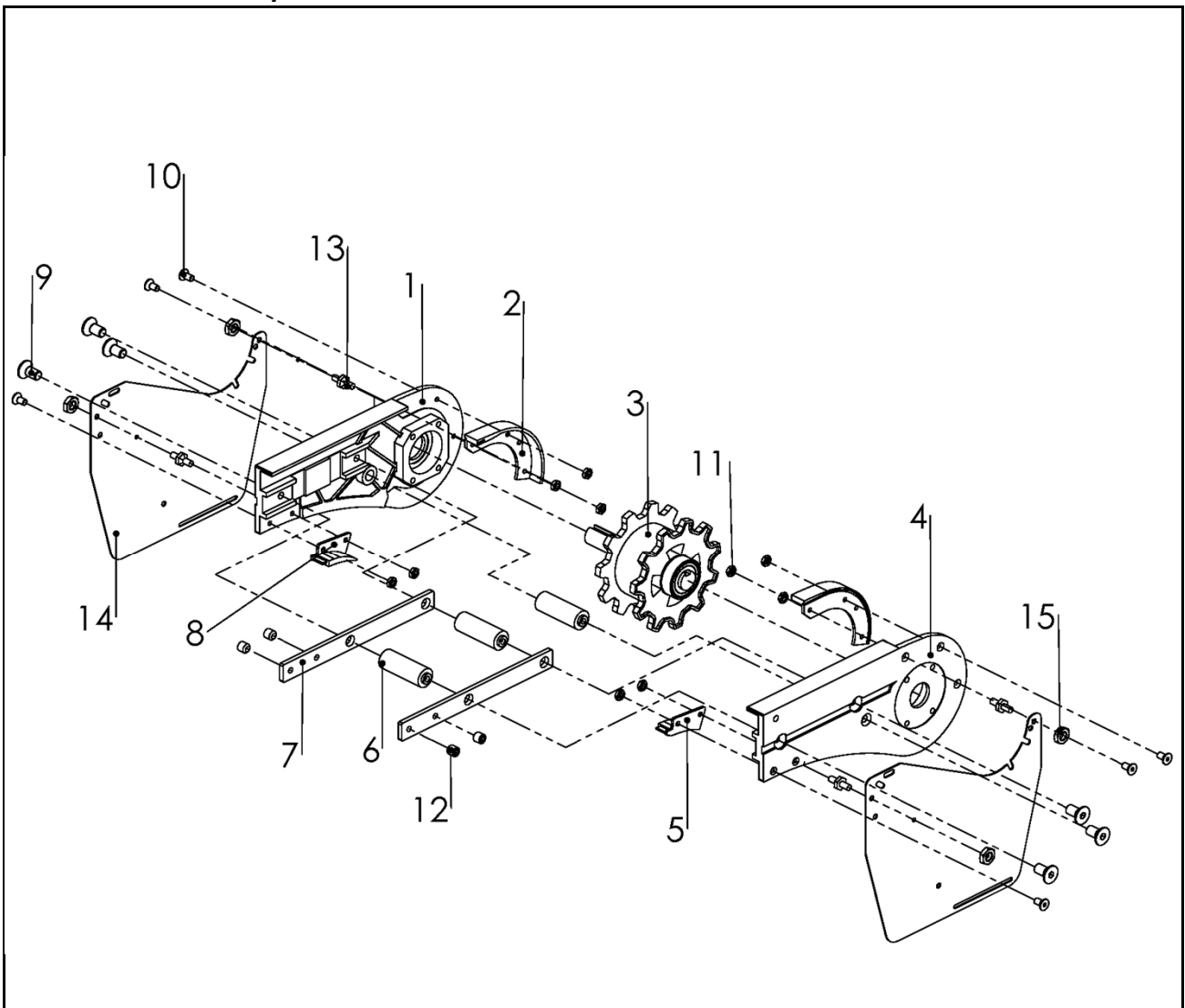
0-unit-FMEW 180/0 H



Item	Part No.	Description	Qty
1	FMEW 180/0 HU	Basic unit	1
2	F3926586	Bracket	1
3	F3926758	Spacer	1
4	F3903339	Nut bracket	1
5	F3926754	Transmission cover	1
6	F3904324	Slip clutch	1
7	C rings	Retaining ring	2
8	Wedge	8x7-40	1
9	M8X40	Screw	2
10	M8 Nut	Nut	2
11	M8X25	Screw	2
12	M5X16	Screw	4
13	M8X20	Screw	3
14	M8 Nut	Nut	1

FKEB 0HLU/0HRUA

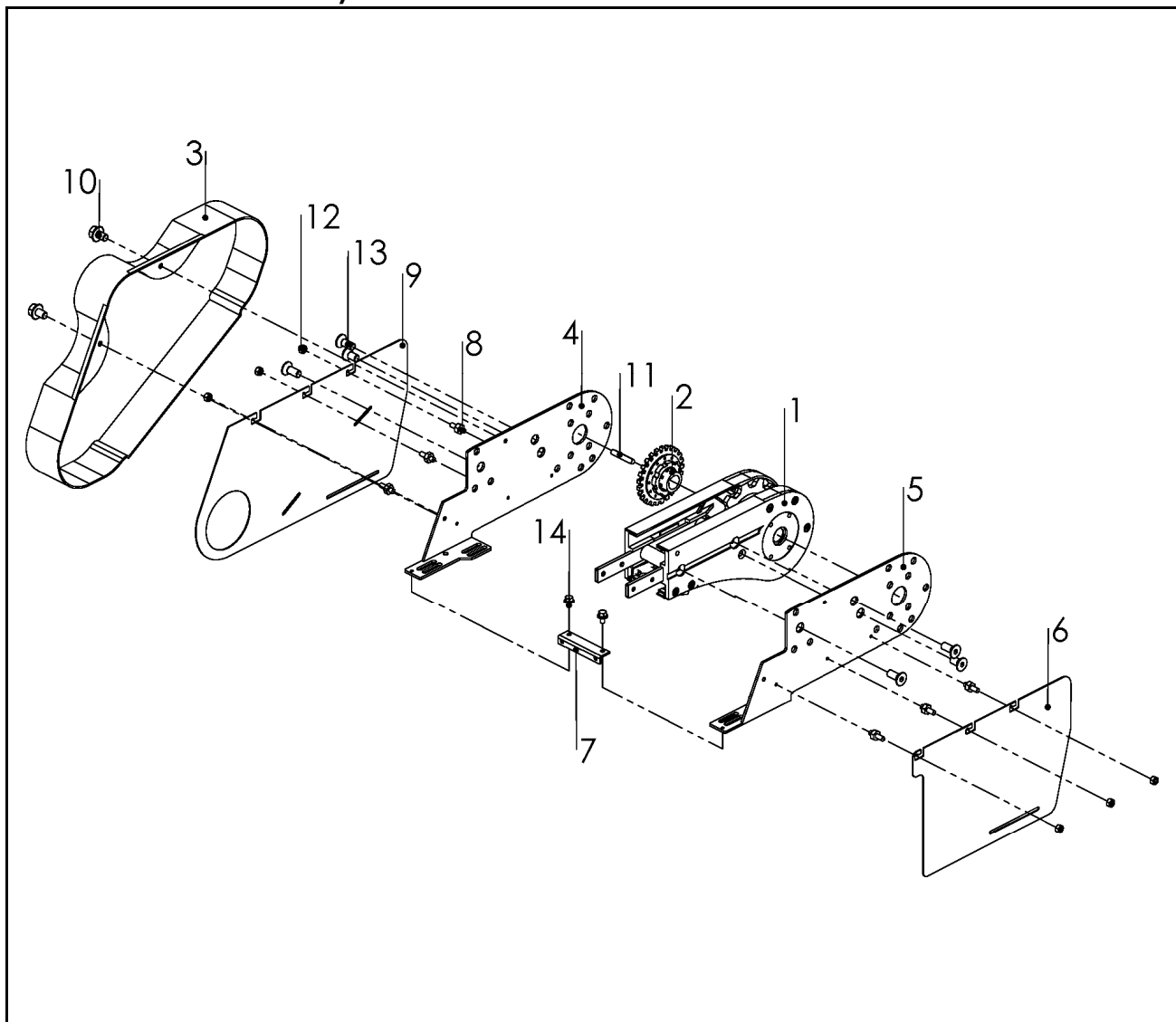
End drive unit, Basic unit



Item	Part No.	Description	Qty
1	F3929210	Side plate L	1
2	F5051421	Steering guide (L+R)	1 Pair
3	F3925063	Drive kit	1
4	F3920209	Side plate R	1
5	F3924763	Guide-R	1
6	F3924989	Spacer	3
7	F3921123A	Connecting strip	2
8	F3924764	Guide-L	1
9	M8X16	Screw	6
10	M5X10	Screw	10
11	M5 NUT	Screw	10
12	M8X8	Screw	4
13	F3924718	Screw	4
14	f3925673	Slack protection	2
15	M8 Nut	Nut	4

End drive unit

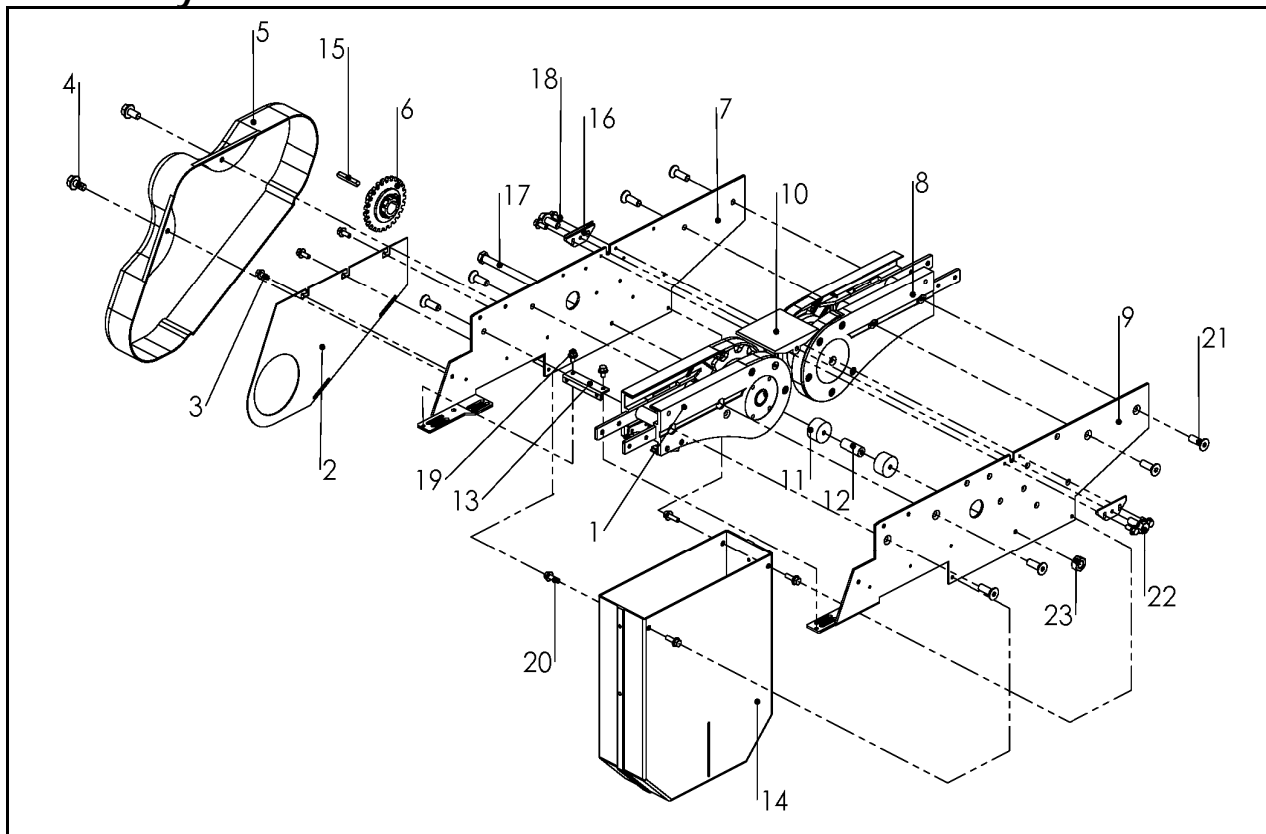
0-unit-FKEB 0 HL/HRA



Item	Part No.	Description	Qty
1	FKEB 0 HLU	Basic unit (left-hand version)	1
	FKEB 0 HRU	Basic unit (right-hand version)	1
2	F3925071	Slip clutch $\Phi 25\text{mm}$	1
3	F3925068	Transmission cover	1
4	F3925024	Motor bracket L	1
5	F3925025	Motor bracket R	1
6	F3925590	Slack protection R	1
7	F3924287	Adjusting block	1
8	F3904862	Screw	6
9	F3925589	Slack protection	1
10	F3904855	Screw	2
11	Key 8x7-50	Wedge	1
12	M5 Nut	Nut	6
13	M8X20	Screw	4
14	M5x8	Screw	2

FKEC 0HL/0HR

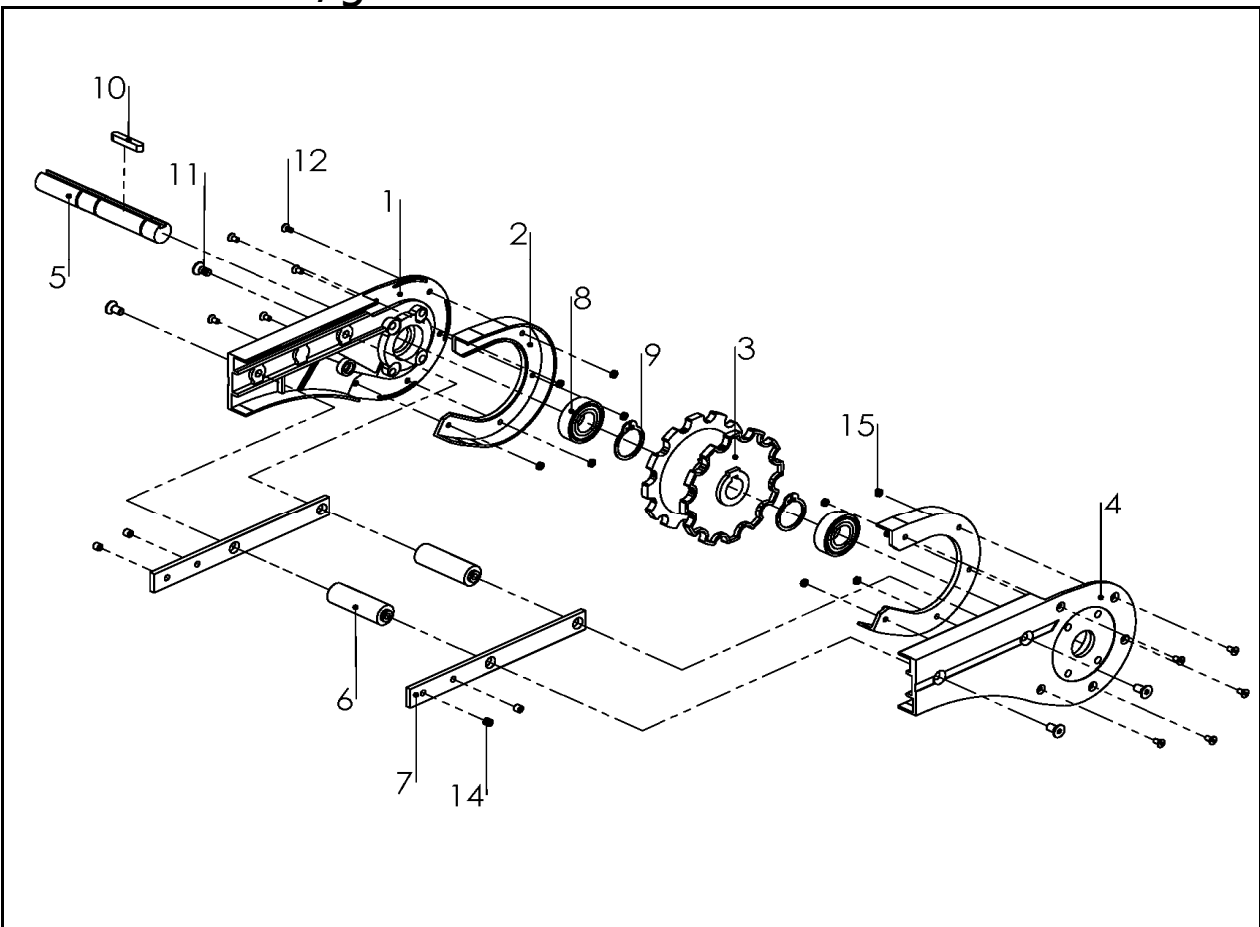
Catenary drive unit 0-unit



Item	Part No.	Description	Qty
1	F3925333	Basic unit (left hand version)	1
	F3925334	Basic unit (right hand version)	
2	F3925069	Chain guard	1
3	F3904862	Screw	3
4	F3904855	Screw	2
5	F3925068	Transmission cover	1
6	F3904324	Slip clutch Ø25mm	1
7	F3925027	Motor bracket L	1
8	F3925332	Idler unit	1
9	F3925028	Motor bracket R	1
10	F3905610	Bridge	1
11	F3920087	Support roller	2
12	F3920010	Distance piece	1
13	F3924287A	Adjusting block	1
14	F3925336	Cover	1
15	8X7-63	Wedge	1
16	F3905278	Adjustment plate	2
17	M6X125	Screw	1
18	M5 x12	Screw	4
19	M5 x 8	Screw	2
20	M5 x 16	Screw	4
21	M 8x 25	Screw	8
22	M8 x 20	Screw	2
23	M6x 1.5	NUT	1

FHEB 0HLGUA/0HRGUA

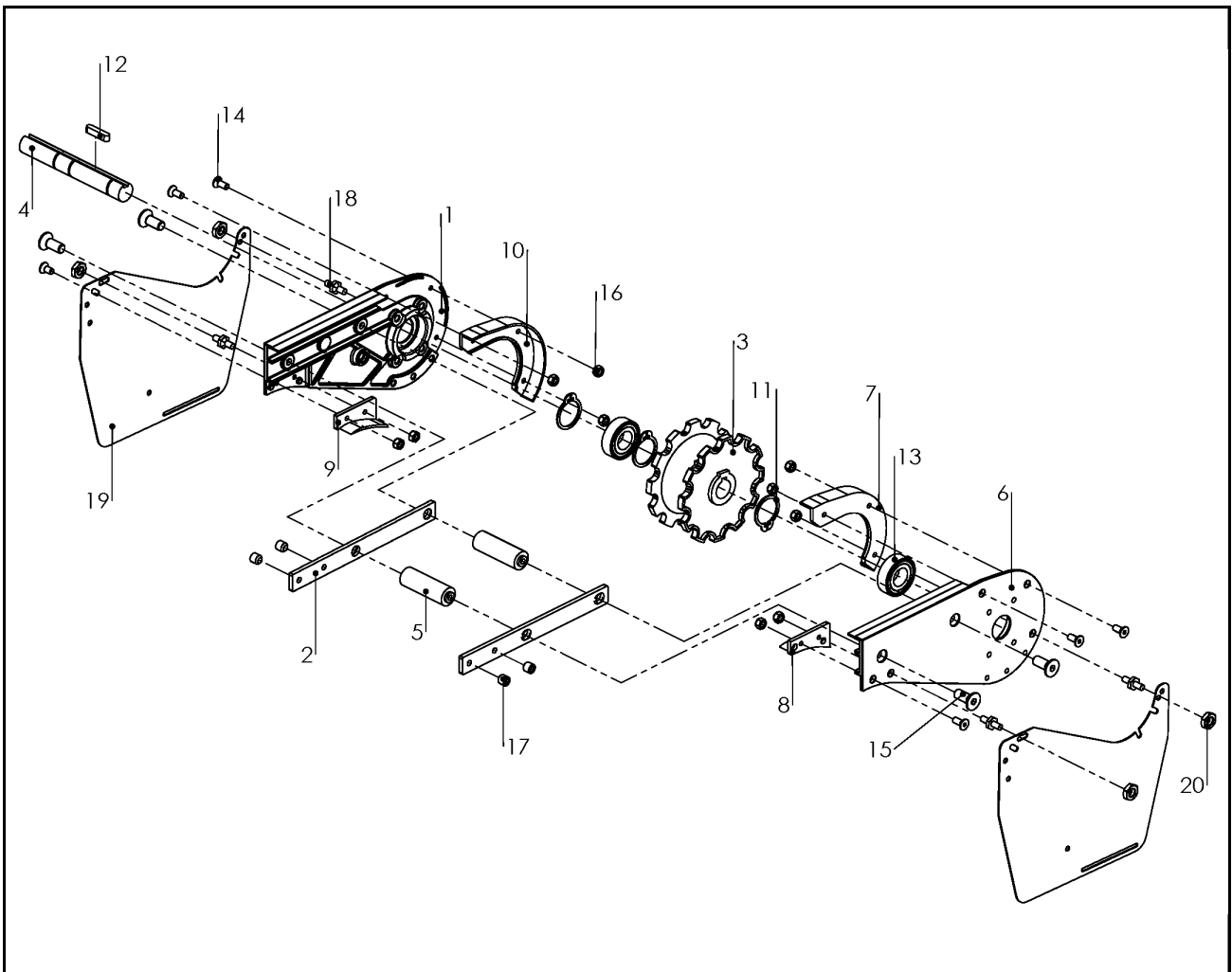
End drive unit, guided Basic unit



Item	Part No.	Description	Qty
1	F3921685A	Side plate L	1
2	F3921164A	Steering guide	2
3	F3904299A	Drive wheel	1
4	F3921684A	Side plate R	1
5	F3904403A	Drive Shaft	1
6	F3904140A	Spacer	2
7	F3921123A	Connecting strip	2
8	Bearing6205	Bearing	2
9	C rings	Retaining ring	2
10	Key	8x7-63	1
11	M8X16	Screw	4
12	M5X10	Screw	10
13	M5 NUT	Screw	10
14	M8X8	Screw	4

FHEB 0HLUA/0HRUA

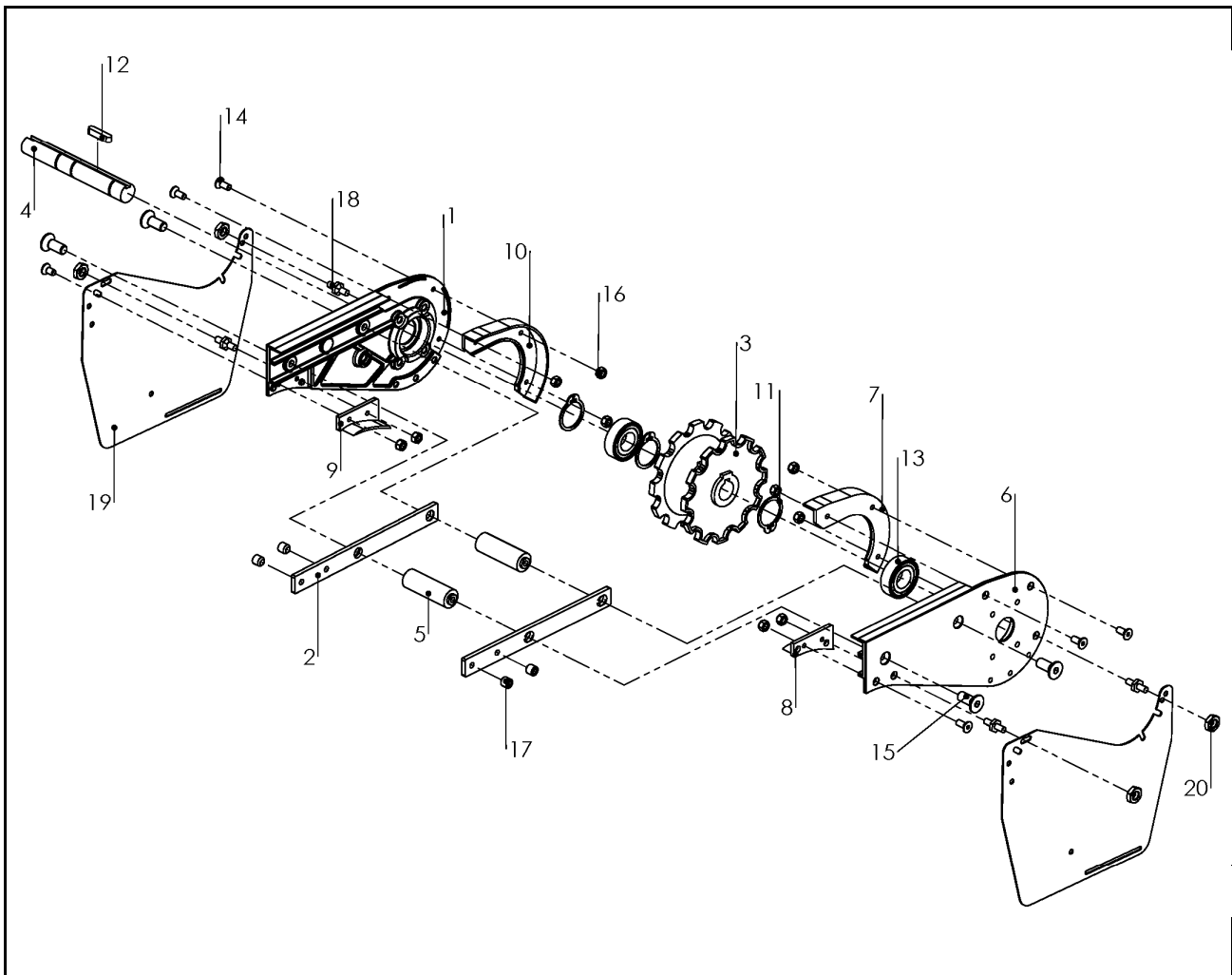
Basic end unit



Item	Part No.	Description	Qty
1	F3904746A	Side plate L	1
2	F3921123A	Connecting strip	2
3	F3904299A	Drive wheel	1
4	F3904403A	Drive shaft	1
5	F3904140A	Spacer	2
6	F3904234A	Side plate R	1
7	F3904312A	Steering guide R	1
8	F3904313A	Guide R	1
9	F3904744A	Guide L	1
10	F3904745A	Steering guide L	1
11	Retaining ring	SgA 25	2
12	Key 8X7-63	Wedge	1
13	Bearing 6205	Bearing	2
14	M5X12	Screw	10
15	M8X16	Screw	4
16	M5 Nut	Nut	10
17	M8 x 8	Screw	4
18	F3925718	Screw	4
19	F3925673	Slack Protection	2
20	M8 Nut	Nut	4

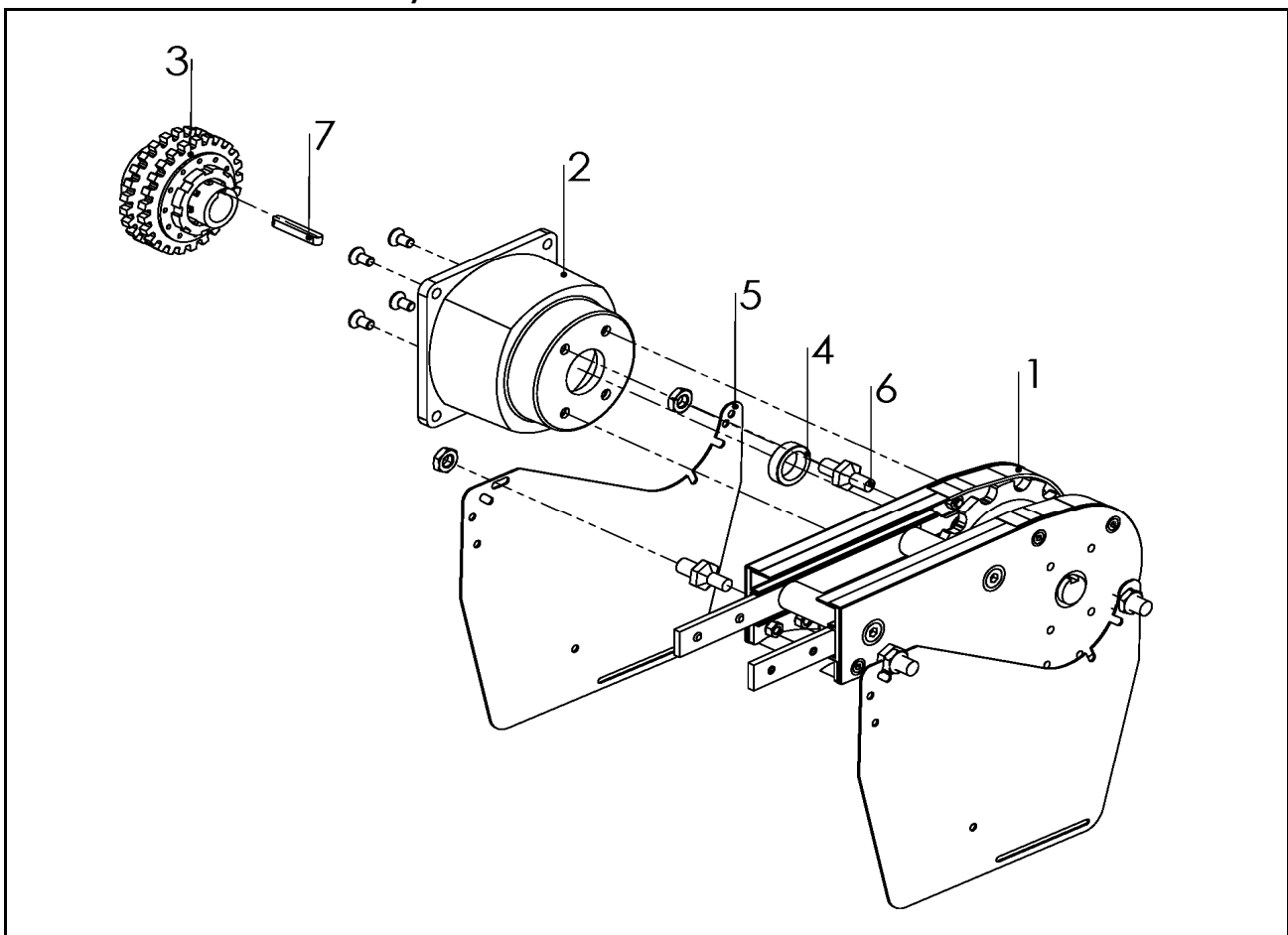
FHEB 0HLUA/0HRUA

Basic end unit



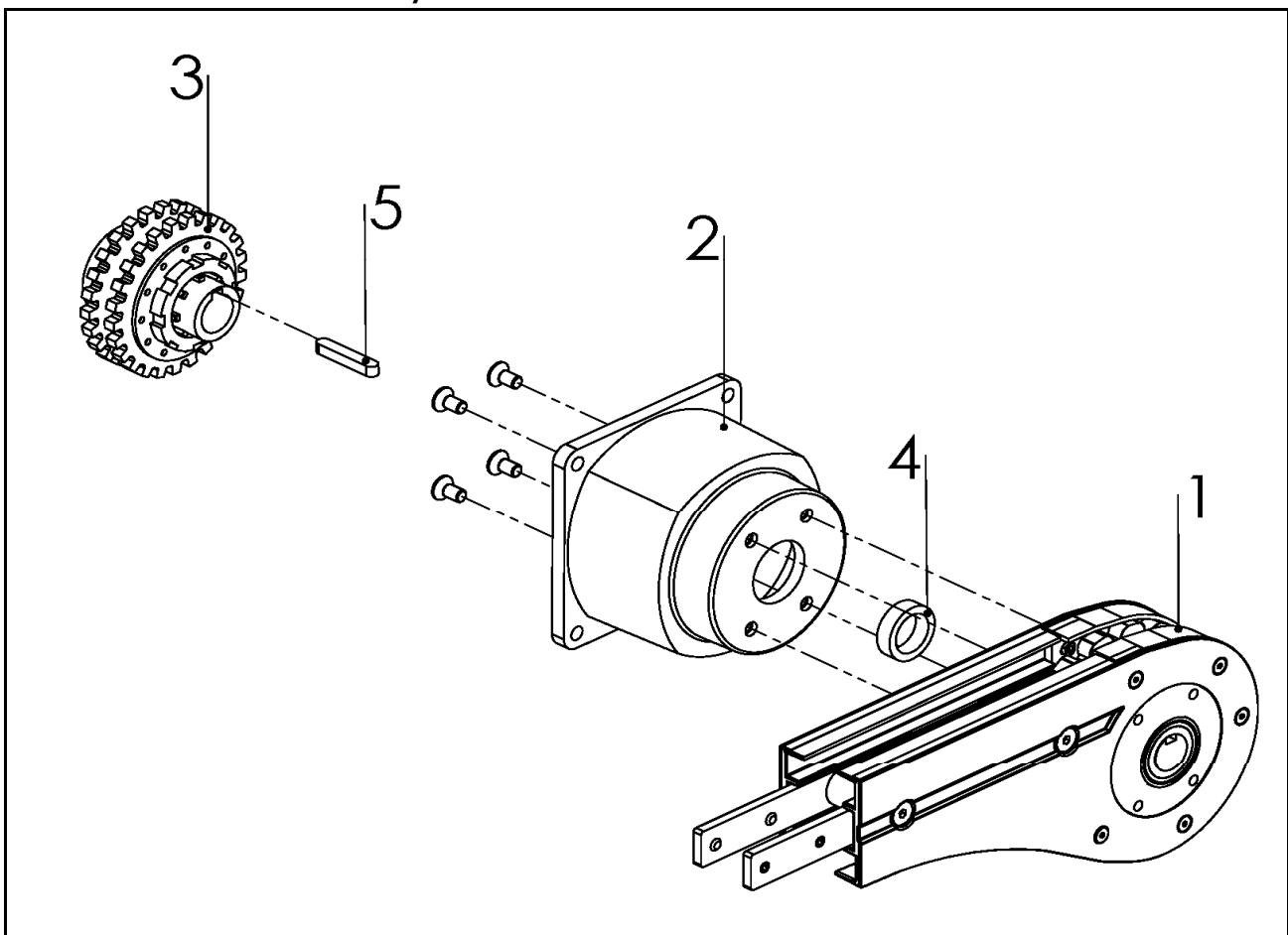
Item	Part No.	Description	Qty
1	F3904746A	Side plate L	1
2	F3921123A	Connecting strip	2
3	F3904299A	Drive wheel	1
4	F3904403A	Drive shaft	1
5	F3904140A	Spacer	2
6	F3904234A	Side plate R	1
7	F3904312A	Steering guide R	1
8	F3904313A	Guide R	1
9	F3904744A	Guide L	1
10	F3904745A	Steering guide L	1
11	Retaining ring	SgA 25	2
12	Key 8X7-63	Wedge	1
13	Bearing 6205	Bearing	2
14	M5X12	Screw	10
15	M8X16	Screw	4
16	M5 Nut	Nut	10
17	M8 x 8	Screw	4
18	F3924718	Screw	4
19	F3925673	Slack Protection	2
20	M8 Nut	Nut	4

End drive unit, direct drive 0-unit-FHEB 0HLP/HRPA



Item	Part No.	Description	Qty
1	FHEB 0HLUA	Basic unit (left-hand version)	1
	FHEB 0HRUA	Basic unit (right-hand version)	1
2	F3920084	Flange	1
3	F5054003	Slip clutch $\Phi 20$ - $\Phi 25$ mm	1
4	F3921652	Distance ring	1
5	F3925673	Slack protection	1
6	F3925718	Screw	4
7	Wedge	8x7-40	1

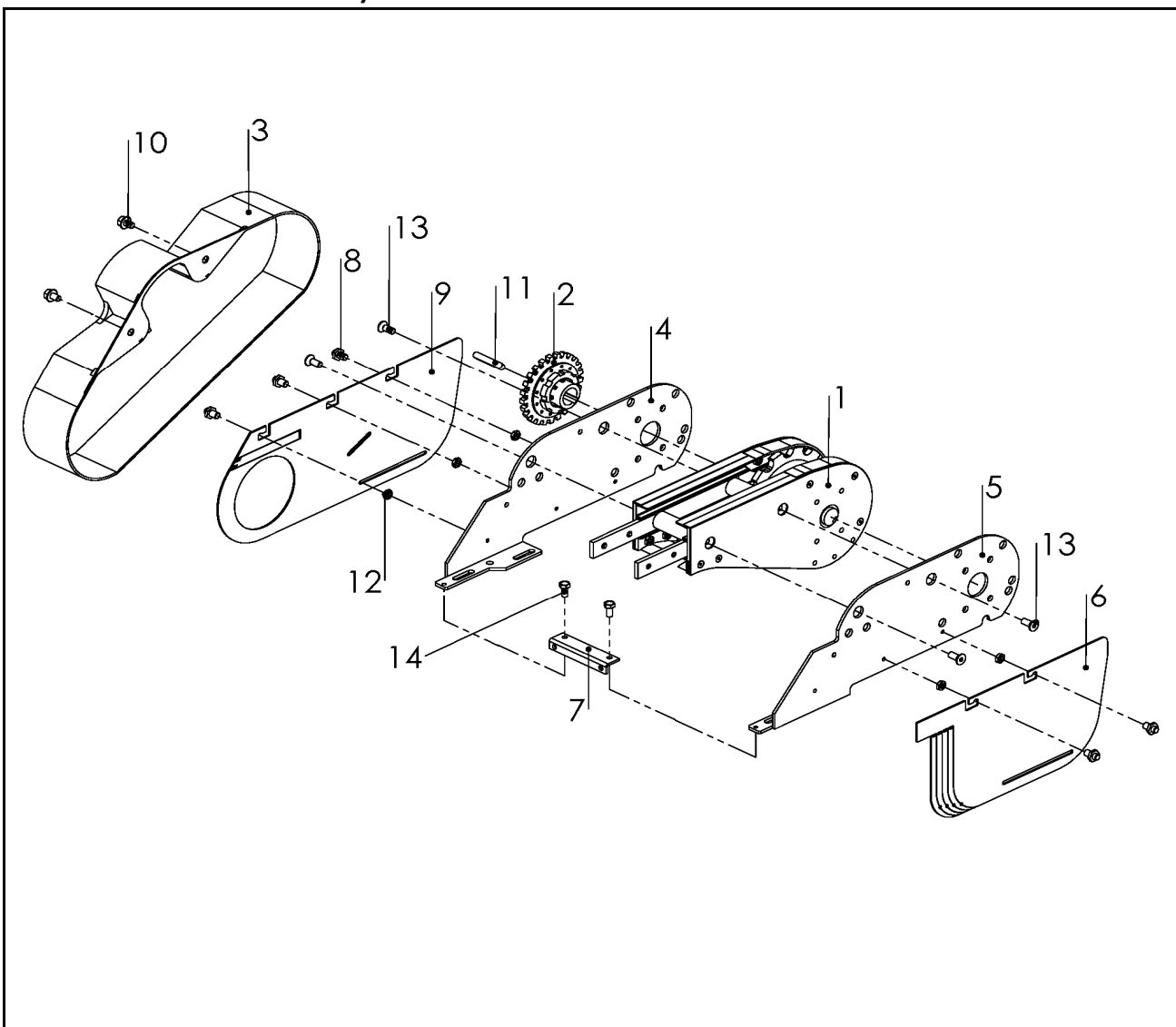
End drive unit, direct drive 0-unit-FHEB 0HLGP/HRGP



Item	Part No.	Description	Qty
1	FHEB 0HLUA	Basic unit (left-hand version)	1
	FHEB 0HRUA	Basic unit (right-hand version)	1
2	F3920084	Flange	1
3	F5054003	Slip clutch $\Phi 20$ - $\Phi 25$ mm	1
4	F3921652	Distance ring	1
5	Wedge	8x7-40	1

End drive unit

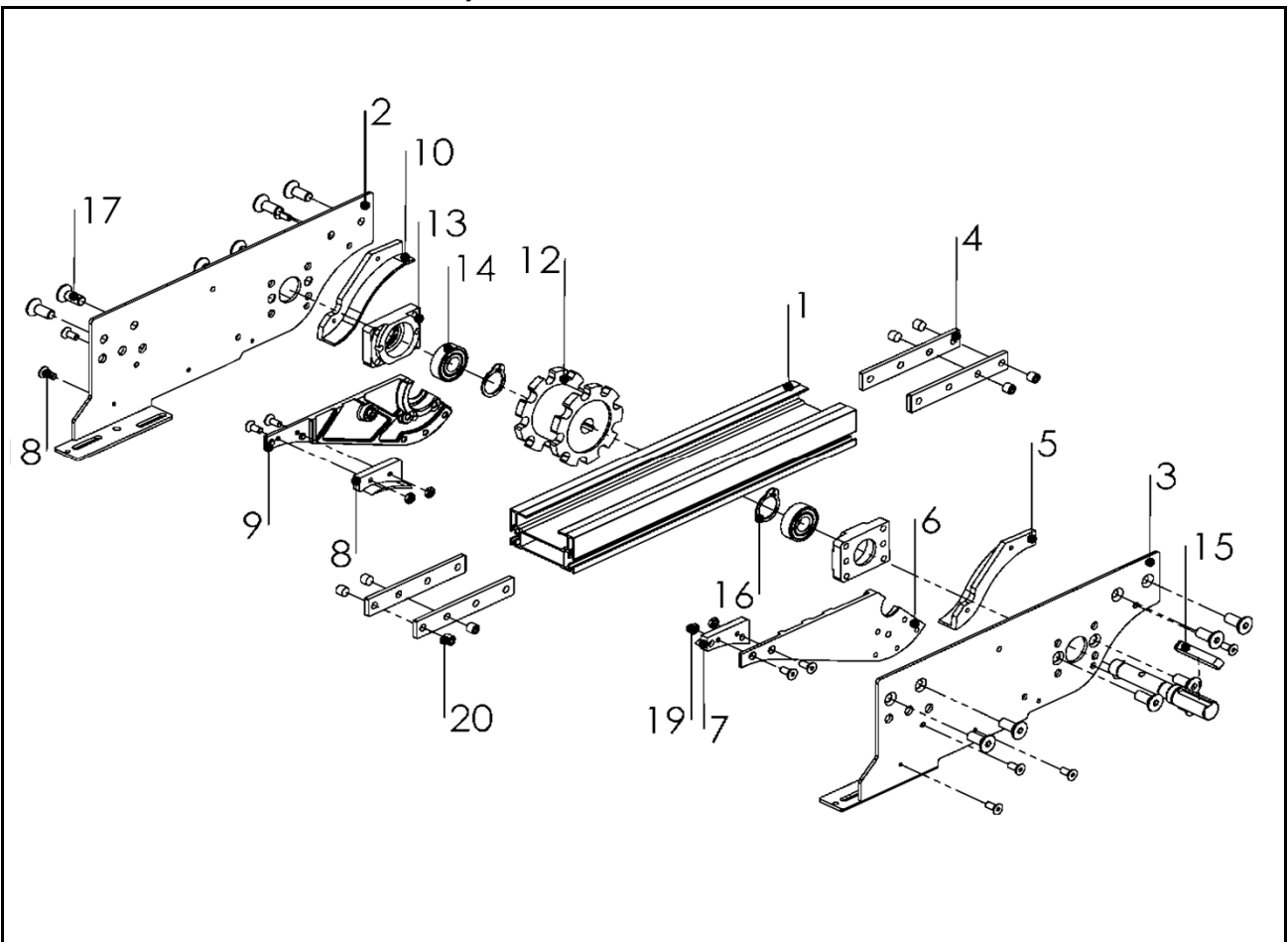
0-unit-FHEB 0 HLA/HRA



Item	Part No.	Description	Qty
1	FHEB 0 HLUA	Basic unit (left-hand version)	1
	FHEB 0 HRUA	Basic unit (right-hand version)	1
2	F3904324	Slip clutch $\Phi 25\text{mm}$	1
3	F3904431A	Transmission cover	1
4	F3904527A	Motor bracket L	1
5	F3904528A	Motor bracket R	1
6	F3904665A	Slack protection R	1
7	F3924287A	Adjusting block	1
8	F3904862	Screw	5
9	F3904666A	Slack protection L	1
10	F3904855	Screw	2
11	Key 8x7-25	Wedge	1
12	M5 Nut	Nut	5
13	M8X20	Screw	4
14	M5x8	Screw	2

Intermediate drive unit

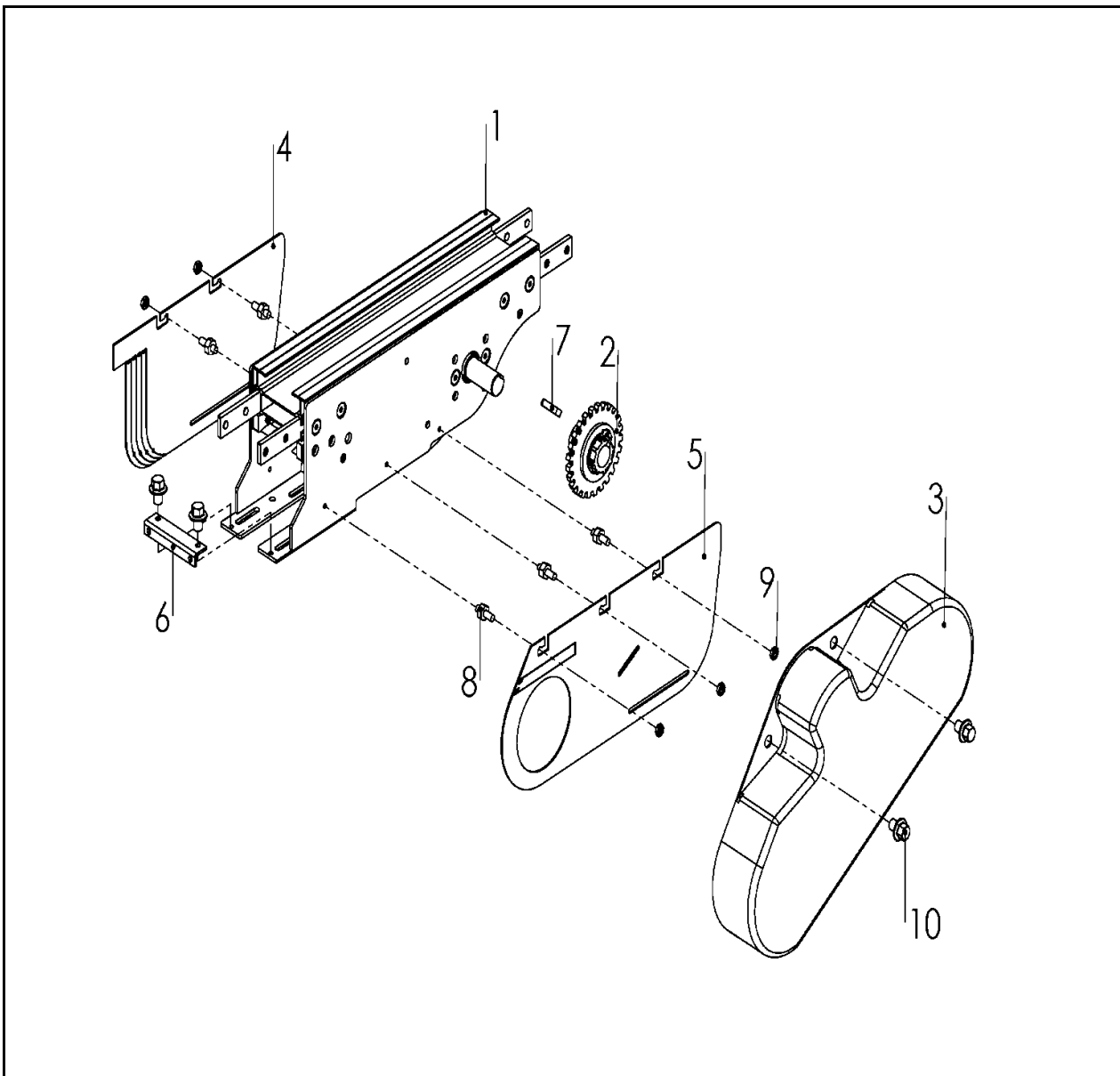
Basic unit-FHER 0 HLU/HRU



Item	Part No.	Description	Qty
1	F3926790	Beam	1
2	F3927121	Side plate L	1
3	F3927122	Side plate R	1
4	FLCJ 6X160	Connecting strip	4
5	F3902661	Steering guide R	1
6	F3927180	Side plate R	1
7	F3904313A	Guide R	1
8	F3904744A	Guide L	1
9	F3927181	Side plate L	1
10	F3924634	Steering guide L	1
11	F3926791	Drive Shaft	1
12	F3902527	Drive Wheel	1
13	F3927119	Bearing house	2
14	Bearing 6204	Bearing	2
15	Key 8X8X50	Wedge	1
16	C Rings	Retaining ring	2
17	M8X20	Screw	12
18	M5X12	Screw	12
19	M5XNut	Nut	4
20	M8X8	Screw	8

Intermediate drive unit

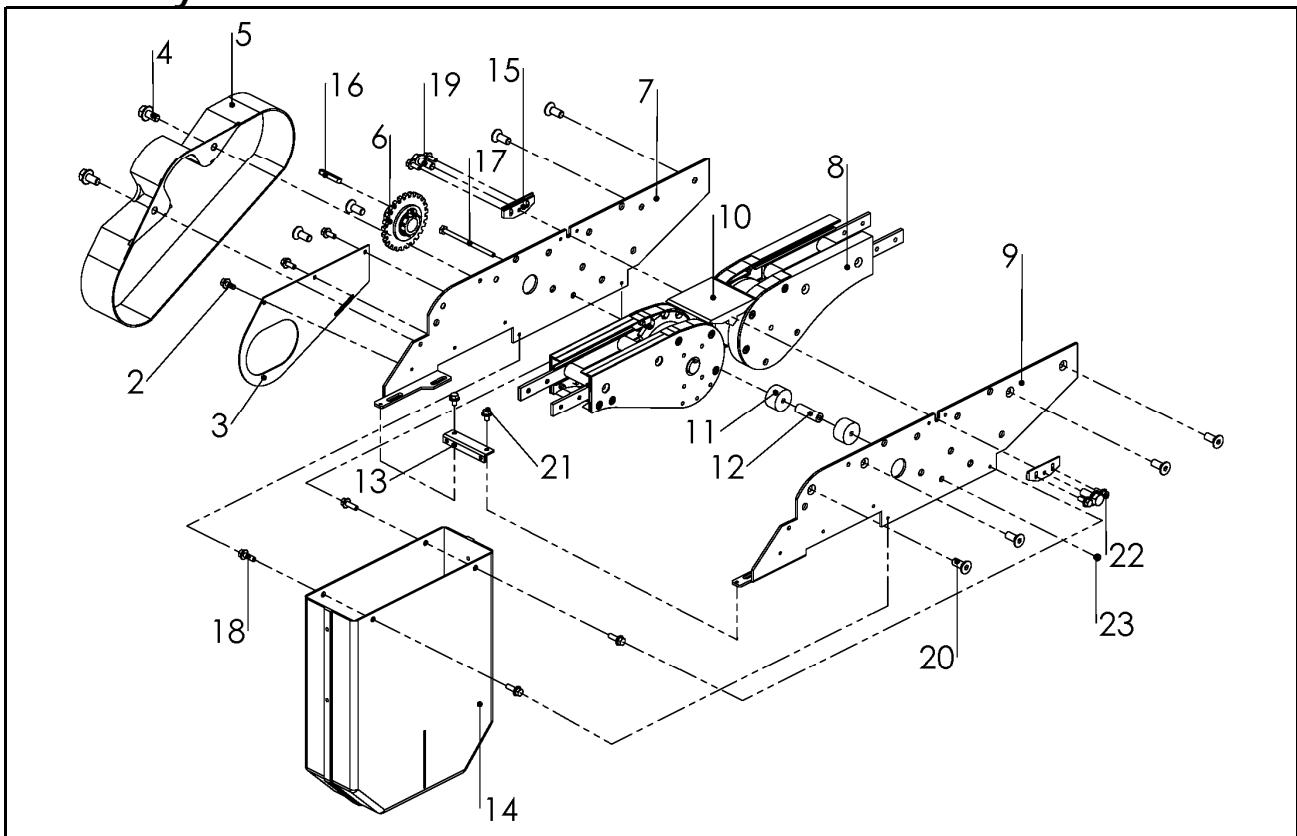
0-unit - FHER 0 HL/HR



Item	Part No.	Description	Qty
1	FHER 0 HLU	Basic unit (left-hand version)	1
	FHER 0 HRU	Basic unit (right-hand version)	1
2	F3904324	Slip clutch $\Phi 25\text{mm}$	1
3	F3904431A	Transmission cover	1
4	F3904665A	Slack protection	1
5	F3904666A	Slack protection	1
6	F3924287A	Adjusting block	1
7	Key 8x7-35	Wedge	1
8	F3904862	Screw	5
9	M5 Nut	Nut	5
10	F3904855	Screw	2

FHEC 0HL/0HR

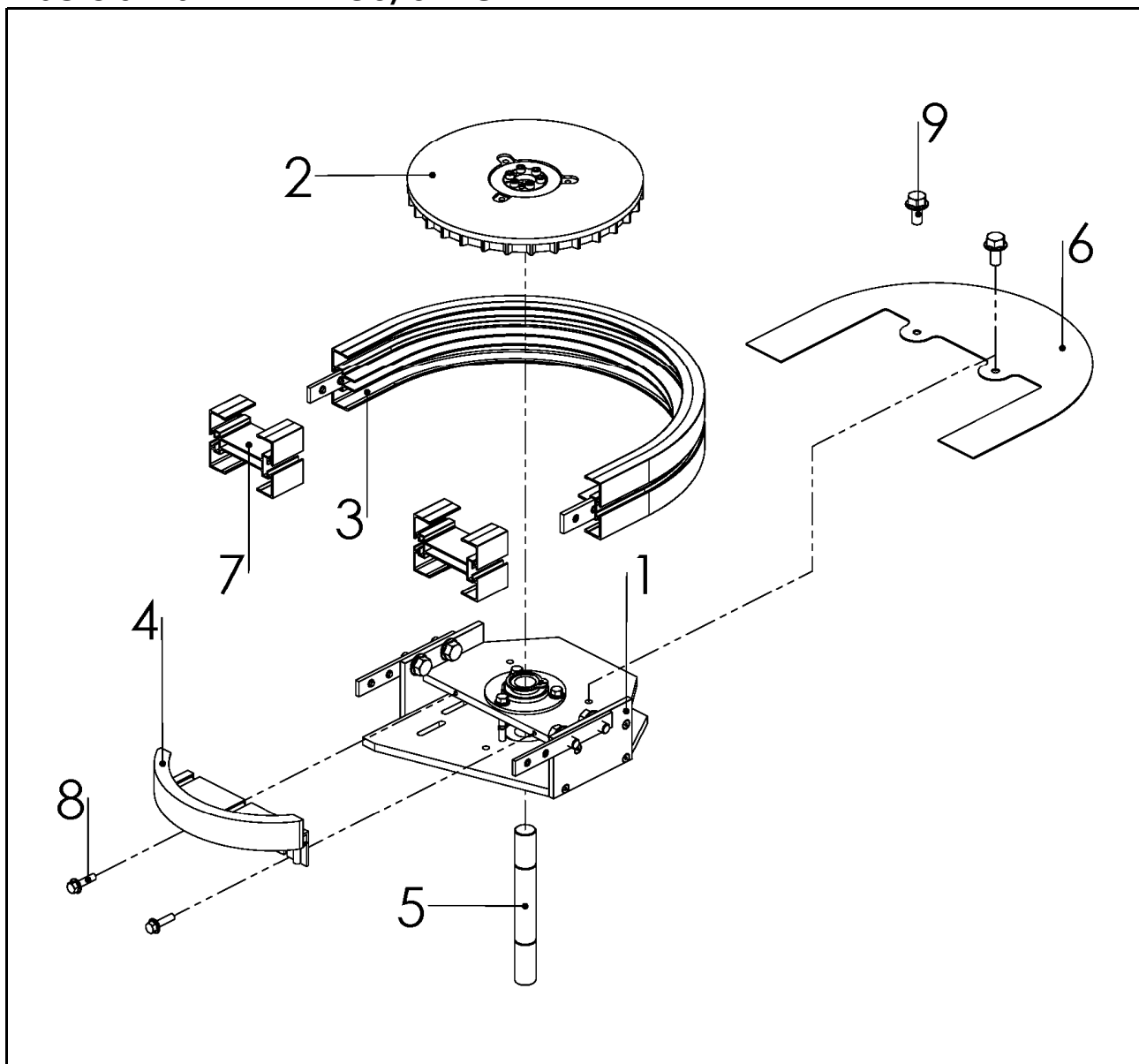
Catenary drive unit 0-unit



Item	Part No.	Description	Qty
1	FHEB 0HLUA	Basic unit (left-hand version)	1
	FHEB 0HRUA	Basic unit (right-hand version)	
2	F3904862	Screw	3
3	F3904847	Chain guard	1
4	F3904855	Screw	2
5	F3904431	Transmission cover	1
6	F3904324	Slip clutch $\Phi 25\text{mm}$	1
7	F3921463	Motor bracket L	1
8	F3921481	Idler unit	1
9	F3921464	Motor bracket R	1
10	F3905610	Bridge	1
11	F3920087	Support roller	2
12	F3920010	Distance piece	1
13	F3924287A	Adjusting block	1
14	F3902795	Cover	1
15	F3905278	Adjustment plate	2
16	Key	Wedge 8X7-25	1
17	M6X105	Screw	1
18	M8X8	Screw	2
19	M8X16	Screw	4
20	M8X25	Screw	8
21	M8X20	Screw	2
22	M5X12	Screw	4
23	M6	Nut	1

Horizontal bend drive unit

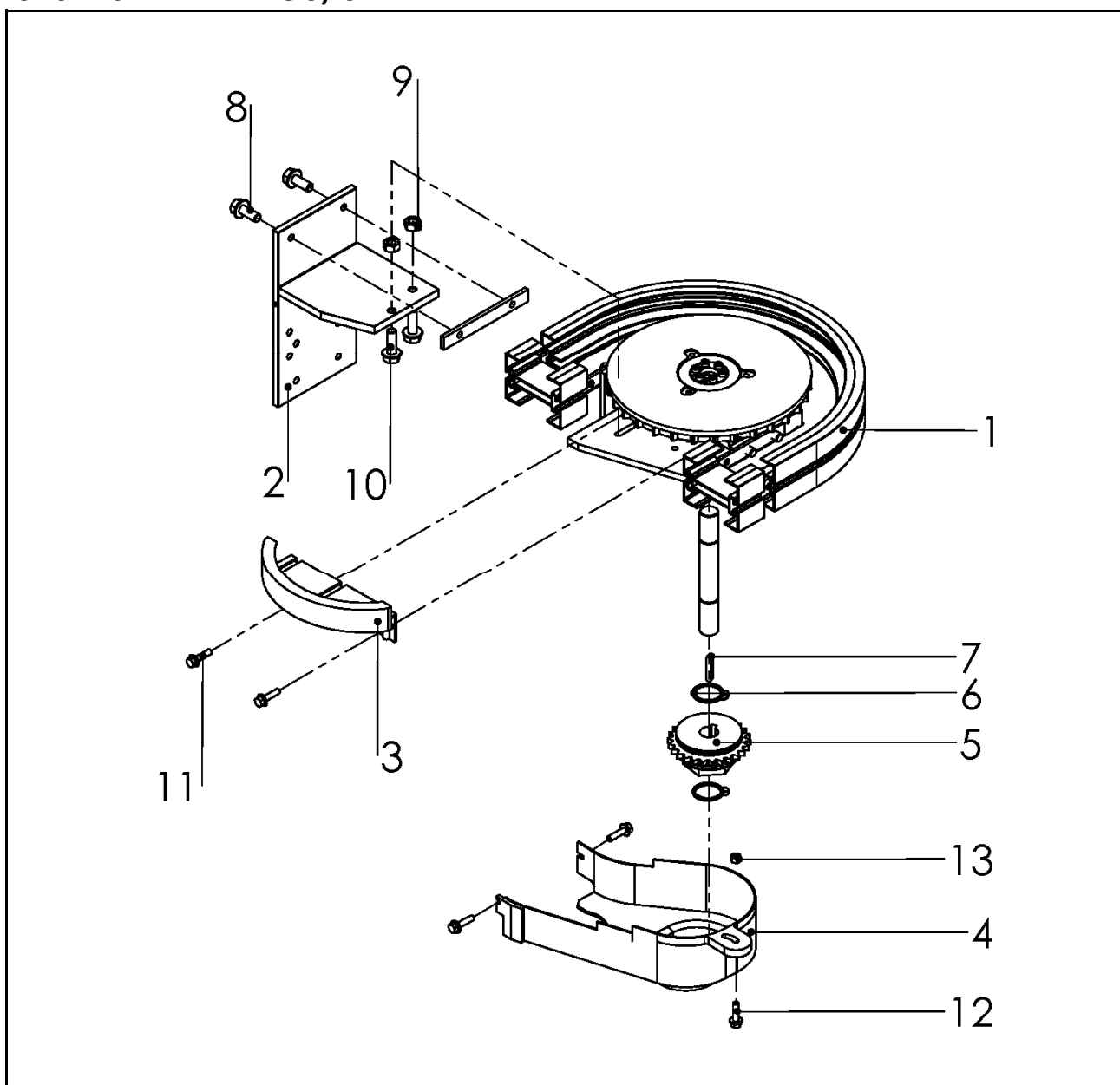
Basic unit-FHEW 180/0 HU



Item	Part No.	Description	Qty
1	F3926575	Bracket	1
2	F3903459	Drive wheel	1
3	FHBE 180R170	Outer horizontal bend	1
4	F3926718	Protective cover	1
5	F3926450	Shaft	1
6	F3926577	Cover	1
7	F3926716	Transport cover	2
8	M5X16	Screw	2
9	M8X16	Screw	2

Horizontal bend drive unit

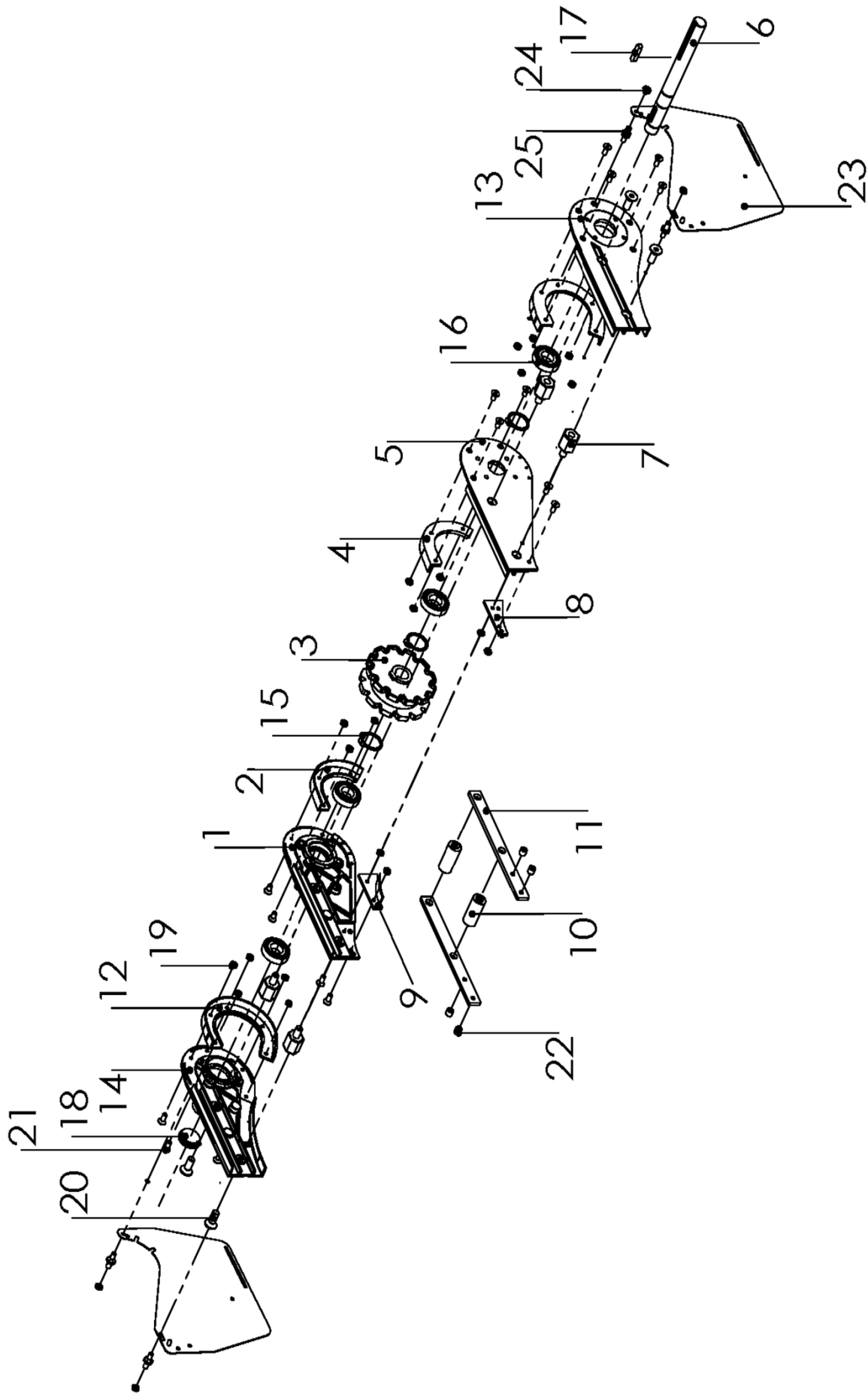
0-unit-FHEW 180/0 H



Item	Part No.	Description	Qty
1	FHEW 180/0 HU	Basic unit	1
2	F3926586	Bracket	1
3	F3903339	Nut bracket	1
4	F3926754	Transmission cover	1
5	F3904324	Slip clutch	1
6	C rings	Retaining ring	2
7	Wedge	8x7-40	1
8	M8X20	Screw	1
9	M8 Nut	Nut	2
10	M8X25	Screw	2
11	M5X16	Screw	4
12	M8X20	Screw	1
13	M8 Nut	Nut	1

FBEB 0A140 LU/RU

End drive unit, direct drive

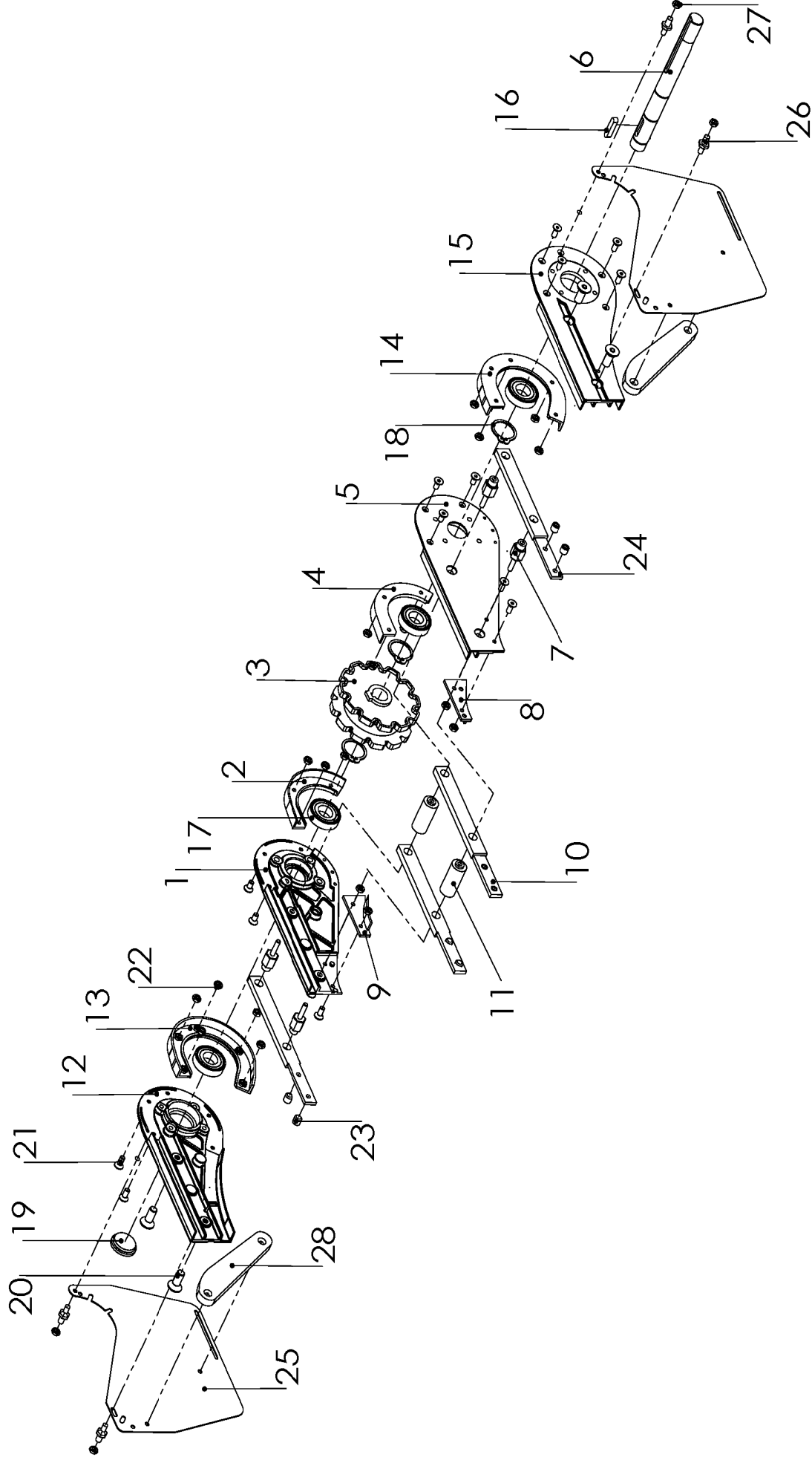


FBEB 0A140 LU/RU

End drive unit, direct drive

Item	Part No.	Description	Qty
1	F3904741A	Side plate L	1
2	F3904743A	Steering Guide L	1
3	F3904457A	Drive wheel	1
4	F3904455A	Steering Guide R	1
5	F3904458A	Side plate R	1
6	For FBEB 0A 140 RU/LR Shaft		1
7	For FBEB 0A 140 RU/LR Spacer		4
8	F3904742A R	Guide R	1
9	F3904742A L	Guide L	1
10	F3904440A	Spacer	2
11	F3921123A	Connecting strip	2
12	F3924519A	Steering Guide	2
13	F3921674A	Side plate R	1
14	F3921675A	Side plate L	1
15	Retaining	Sga25	3
16	Bearing6205	Bearing	4
17	Key	8x7-40	1
18	RCA 52-7	Cover	1
19	M5X10 NUT	Screw	20
20	M8X16	Screw	8
21	M5X10	Screw	20
22	M8X8	Screw	4
23	F3925673	Slack Protection	2
24	F3925718	Screw	4
25	M8 Nut	Nut	4

FBEB 0A 175 LU/RU
End drive unit , direct drive

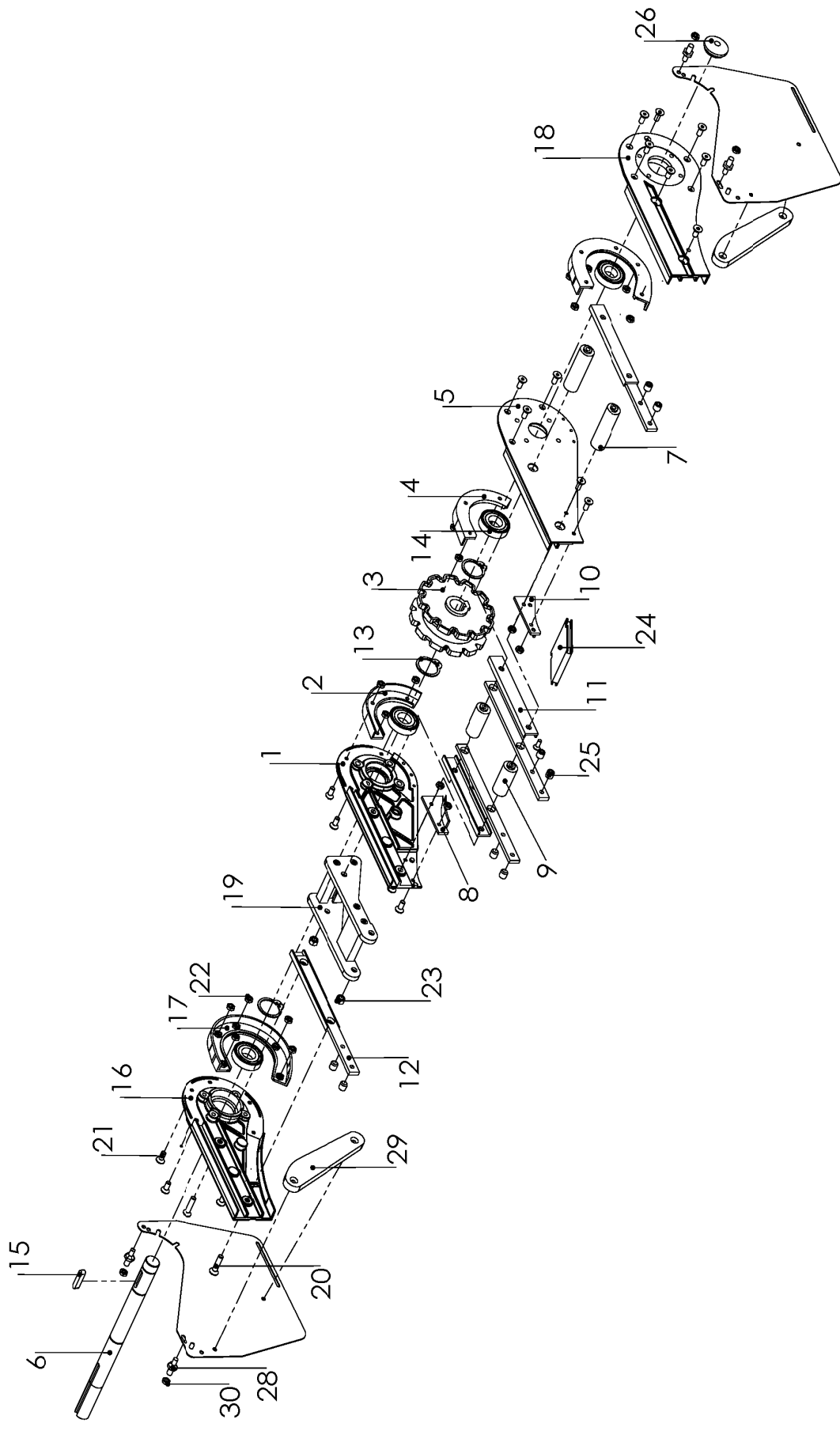


FBEB 0A 175 LU/RU

End drive unit , direct drive

Item	Part No.	Description	Qty
1	F3904741A	Side plate L	1
2	F5043878A	Steering Guide L	1
3	F3904457A	Drive wheel	1
4	F5043877A	Steering Guide L	1
5	F3904458A	Side plate R	1
6	F5046379A	Shaft	1
7	Connecting Nut M8X26	Screw	4
8	F5043879	Guide R	1
9	F5043880	Guide L	1
10	Connecting strip	Connecting strip 10T	2
11	F5044322	Spacer	2
12	F3921675A	Side plate L	1
13	F5043876A	Guide R	1
14	F5043876A	Guide L	1
15	F3921674A	Side plate R	1
16	Wedge 8x7-40	Wedge	1
17	Bearing6205	Bearing	4
18	Retaining ring	Retaining ring	3
19	RCA52-7	Cover	1
20	M8X20	Screw	4
21	M5X12	Screw	18
22	M5 Nut	Nut	20
23	M8X8	Screw	8
24	Connecting strip	Connecting strip 9T	2
25	F3925673	Slack Protection	2
26	F3925718	Screw	4
27	M8 Nnt	Nut	4
28	F5048259	Guide	2

FBEB 0A 295 LU/RU
End drive unit , direct drive



End drive unit

0-unit FBEB 0A 295 LU/RU

Item	Part No.	Description	Qty
1	F3904741A	Side plate L	1
2	F5043878A	Steering Guide L	1
3	F3904457A	Drive wheel	1
4	F5043877A	Guide R	1
5	F3904458A	Side plate R	1
6	F3926267A	Shaft	1
7	F5044322-long	Spacer	2
8	F5043880	Guide L	1
9	F5044322	Spacer	2
10	F5043879	Guide R	1
11	F5044130	Spacer	4
12	F5044317	Connecting strip	4
13	Retaining ring	Retaining ring	3
14	Bearing6205	Bearing	4
15	8X7-40	Wedge	1
16	F3921675A	Slide plate L	1
17	F5043876A	Guide R /Guide L	2
18	F3921674A	Slide plate R	1
19	F5046959	Fastener yoke	1
20	M8X20	Screw	4
21	M5X12	Screw	20
22	M5 Nut	Nut	20
23	M8 Nut	Nut	2
24	F5050995	Protection plate	1
25	M8x8	Screw	8
26	RCA 52-7	Cover	4
27	F3925673	Slack Protection	2
28	F3925718	Screw	4
29	M8 Nut	Nut	4

Index

type	
FUEB 0L/RU	FBEB 0A 295 L/RU
FSEB 0HL/RGUA	
FSEB 0HL/RUA	
FSEB 0HL/RPA	
FSEB 0HL/RGP	
FSEB 0HL/RA	
FSEW 180 OHU	
FSEW 180 OH	
FLEB 0HL/RGUA	
FLEB 0HL/RUA	
FLEB 0HL/RPA	
FLEB 0HL/RGP	
FLEB 0HL/RA	
FLER 0HLU/RU	
FLER 0 HL HR	
FLEC 0HL/R	
FLEW 180 OHU	
FLEW 180 OH	
FMEB 0HL/RGUA	
FMEB 0HL/RUA	
FMEB 0HL/RPA	
FMEB 0HL/RGP	
FMEB 0HL/RA	
FMER 0HL/RU	
FMER 0 HL HR	
FMEC 0HL/R	
FMEW 180 OHU	
FMEW 180 OH	
FKEB 0HL/RUA	
FKEB 0HL/RA	
FKEC 0HL/R	
FHEB 0HL/RGUA	
FHEB 0HL/RUA	
FHEB 0HL/RPA	
FHEB 0HL/RGP	
FHEB 0HL/RA	
FHER 0HL/RU	
FHER 0 HL HR	
FHEC 0HL/R	
FHEW 180 OHU	
FHEW 180 OH	
FBEB 0A 140 L/RU	
FBEB 0A 175 L/RU	