

Drive unit

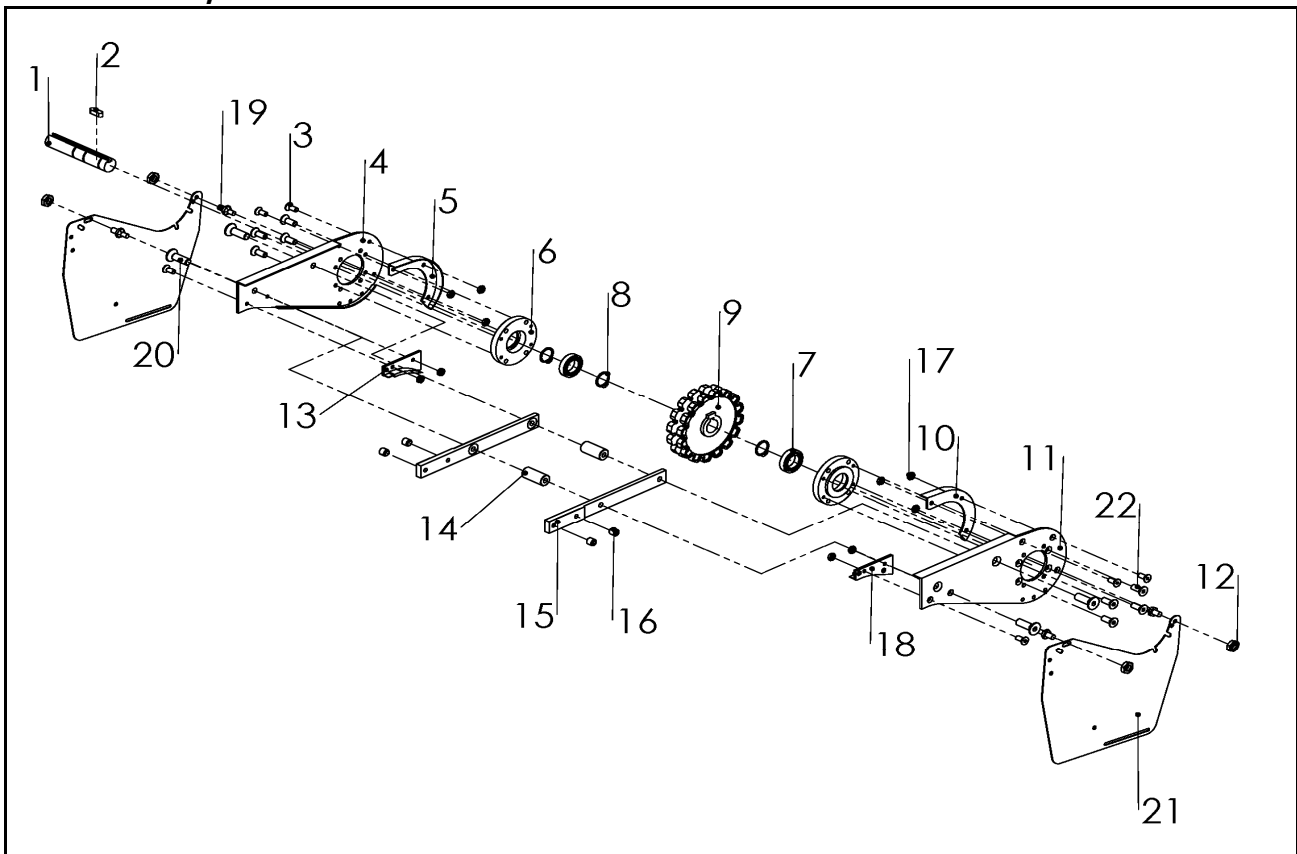
Svstem FLX. FMX. FHX. FBX175. FBX295

Contents

Conveyor system FLEBX 0HLU/0HRU - Drive unit
Conveyor system FLEBX 0HLGU/0HRGU- Drive unit
Conveyor system FMEBX 0HLU/0HRU - Drive unit
Conveyor system FMEBX 0HLGU/0HRGU- Drive unit
Conveyor system FHEBX 0HLU/0HRU - Drive unit
Conveyor system FHEBX 0HLGU/0HRGU- Drive unit
Conveyor system FBEBX 0A175LU/RU - Drive unit
Conveyor system FBEBX 0A295LU/RU - Drive unit

FLEBX 0HLU/0HRU

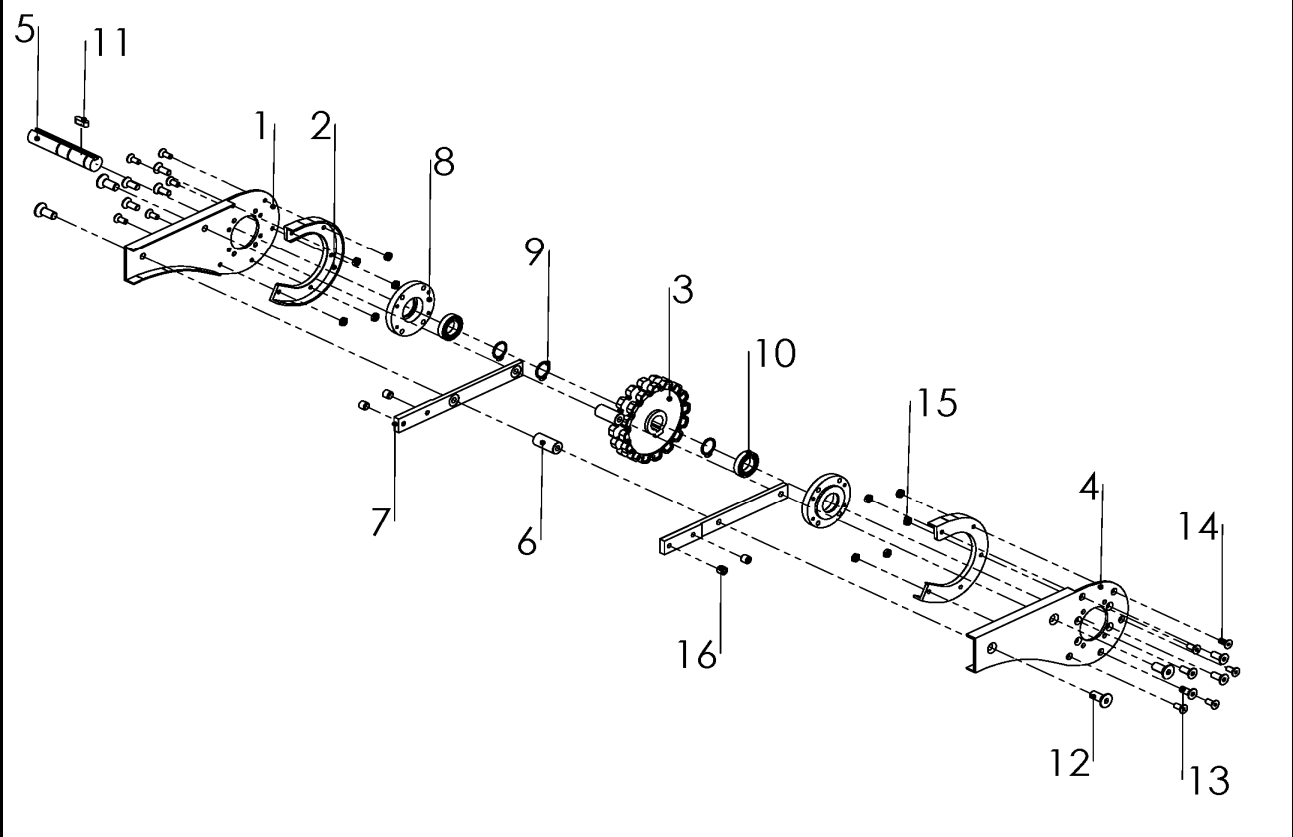
End drive, Basic unit



Item	Part No.	Description	Qty
1	F3921124A	Drive Shaft	1
2	Key	8x7-40	1
3	M5x12	Screw	10
4	F3920942S	Side plate-L	1
5	F3920944A	Streeing Guide-L	1
6	Bearing fixed plate 6005	Bearing fixed plate	2
7	Bearing SS 6005	Bearining	2
8	C rings	Retaining ring	3
9	F3920946A	Drive Wheel	1
10	F3920945A	Streeing Guide-R	1
11	F3920943S	Side plate-R	1
12	M8 NUT	NUT	4
13	F3905774A	Guide-L	1
14	F3920947S	Spacer($\Phi 20$ L=42mm)	2
15	F3921123S	Connecting strip	2
16	M8x8	Screw	4
17	M5 NUT	NUT	10
18	F3902303A	Guide-R	1
19	F3925718	Screw	4
20	M8x8	Screw	4
21	F3925673S	Slack protction	2
22	M6x16	Screw	8

FLEBX 0HLGU/0HRGU

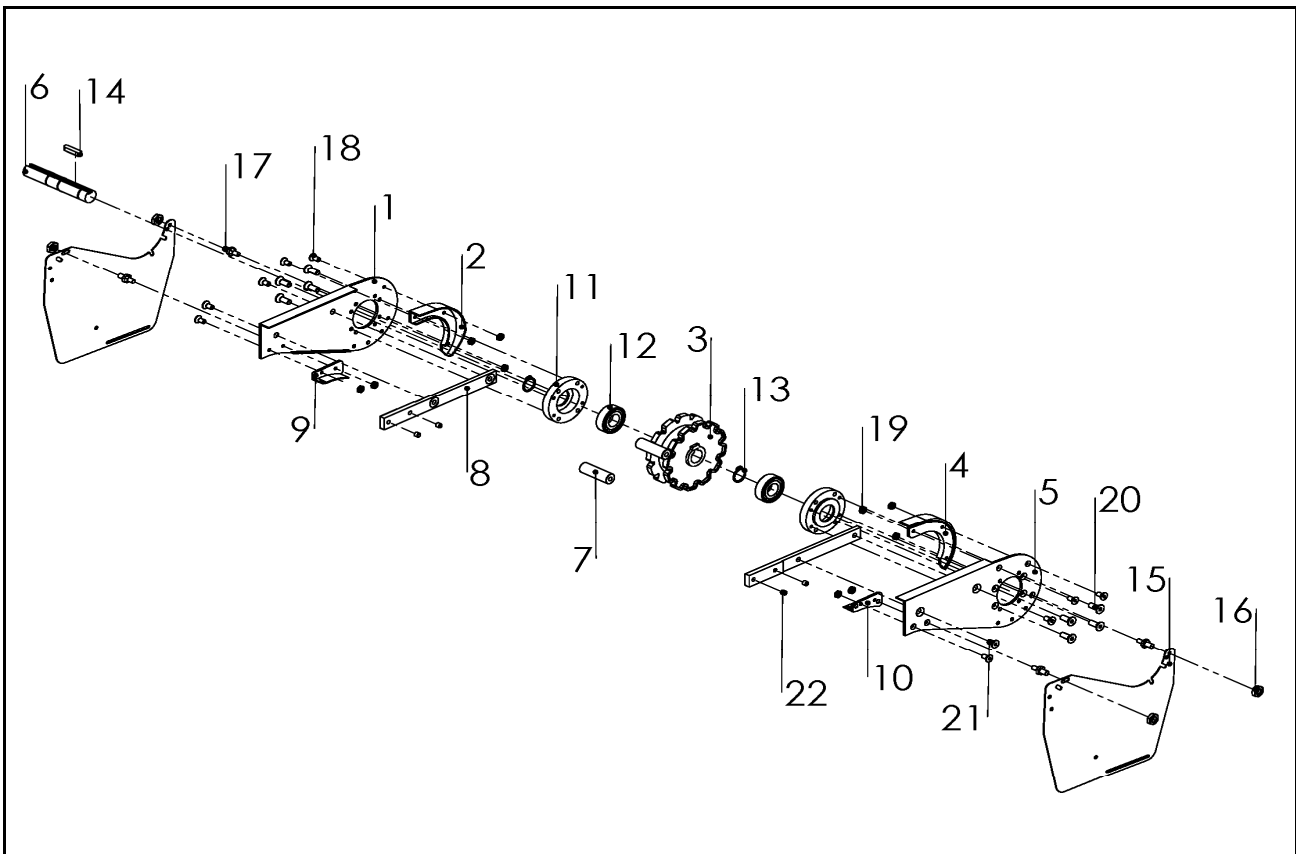
End drive unit.guided Basic unit



Item	Part No.	Description	Qty
1	F3921498S	Side plate L	1
2	F3924518A	Streering guide	2
3	F3920946A	Drive wheel	1
4	F3921497A	Side plate R	1
5	F3921124A	Drive Shaft	1
6	F3920947S	Spacer($\Phi 20$ L=42mm)	1
7	F3921123S	Connecting strip	2
8	Bearing flxed plate 6005	Bearing flxed plate	2
9	C rings	Retaining ring	3
10	Bearing SS 6005	Bearing	2
11	key	8x7-30	1
12	M8x8	Screw	4
13	M6x16	Screw	8
14	M5x10	Screw	10
15	M5 NUT	NUT	10
16	M8x8	Screw	4

FMEBX 0HLU/RU

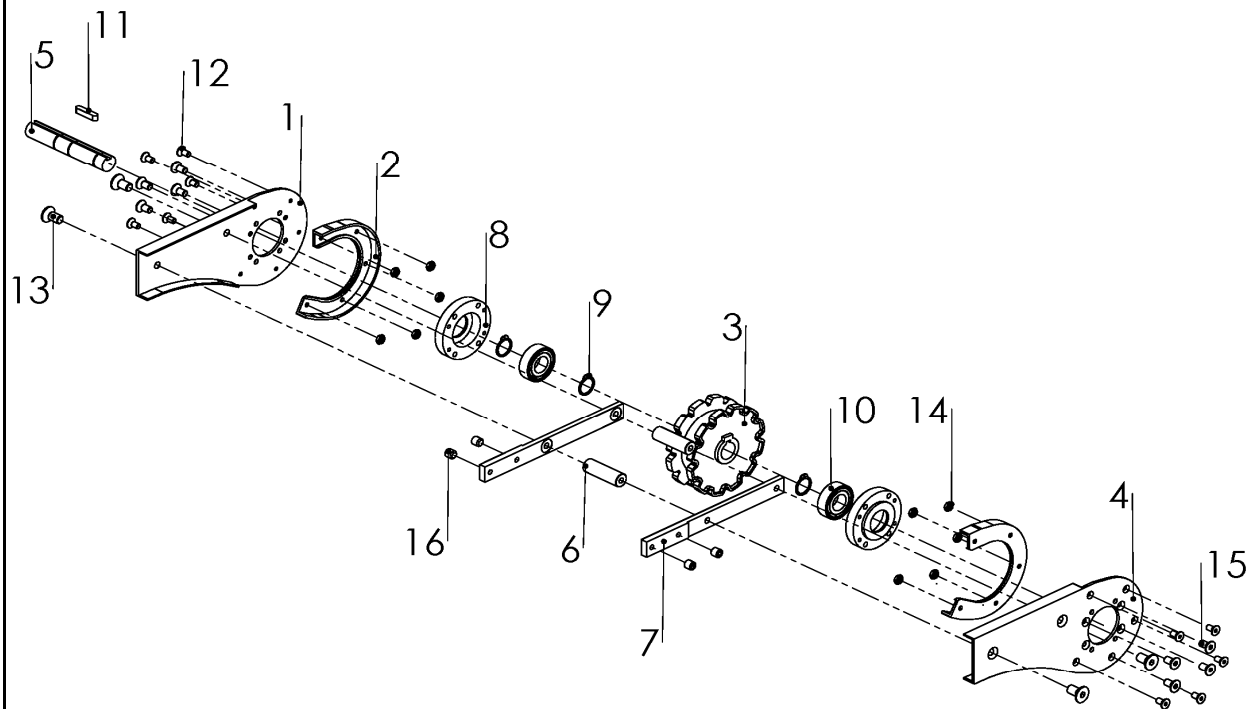
End drive unit. Basic unit



Item	Part No.	Description	Qty
1	F3904741S	Side plate L	1
2	F3904743A	Streering guide L	1
3	F3904457A	Drive wheel	1
4	F3904455A	Streering guide R	1
5	F3904458S	Side plate R	1
6	F3904459A	Drive shaft	1
7	F3904440S	Spacer($\Phi 20$ L=62mm)	2
8	F3921123S	Connecting strip	2
9	F3904742A	Guide-L	1
10	F3904456A	Guide-R	1
11	Bearing flxed plate 6205	Bearing flxed plate	1
12	Bearing SS 6205	Bearing	2
13	C rings	Sga 25	3
14	Key	8x7-40	4
15	F3925673S	Slack protection	2
16	M8 Nut	Nut	4
17	F3925718F3925718	Screw	4
18	M5x12	Screw	10
19	M5 Nut	Nut	10
20	M6x16	Screw	8
21	M8x30	Screw	4
22	M8x8	Screw	4

FMEBX 0HLGU/0HRGU

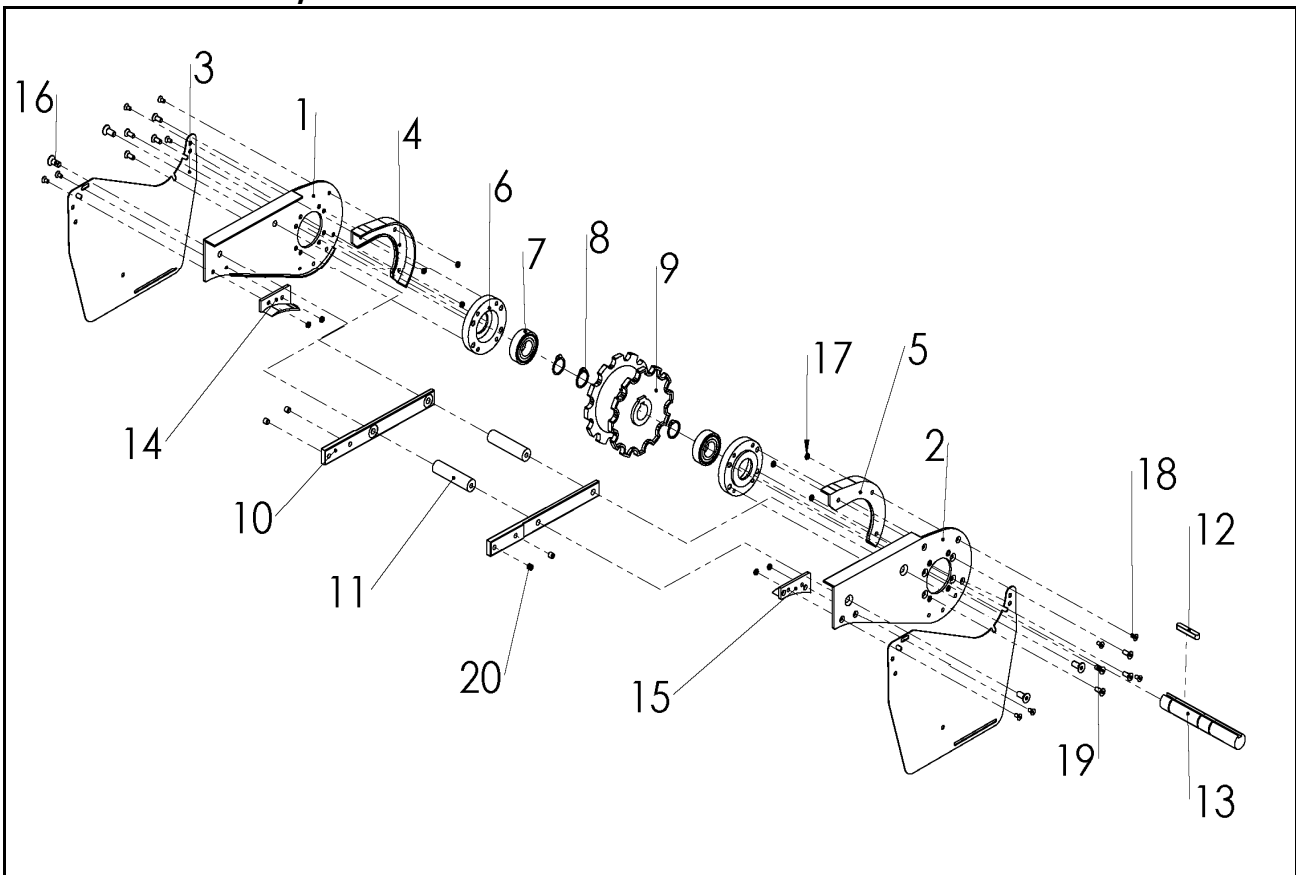
End drive unit, Basic unit



Item	Part No.	Description	Qty
1	F3921675S	Side plate L	1
2	F3924519A	Streering guide	2
3	F3904457A	Drive wheel	1
4	F3921674S	Side plate R	1
5	F3904459A	Drive Shaft	1
6	F3904440S	Spacer($\Phi 20$ L=62mm)	2
7	F3921123S	Connecting strip	2
8	Bearing fixed plate 6205	Bearing fixed plate	2
9	C rings	Retaining ring	3
10	Bearing SS 6205	Bearing 6205	2
11	key	8x7-40	1
12	M5x12	Screw	10
13	M8x8	Screw	4
14	M5 NUT	NUT	10
15	M6x16	Screw	4
16	M8x8	Screw	4

FHEBX 0HLU/0URU

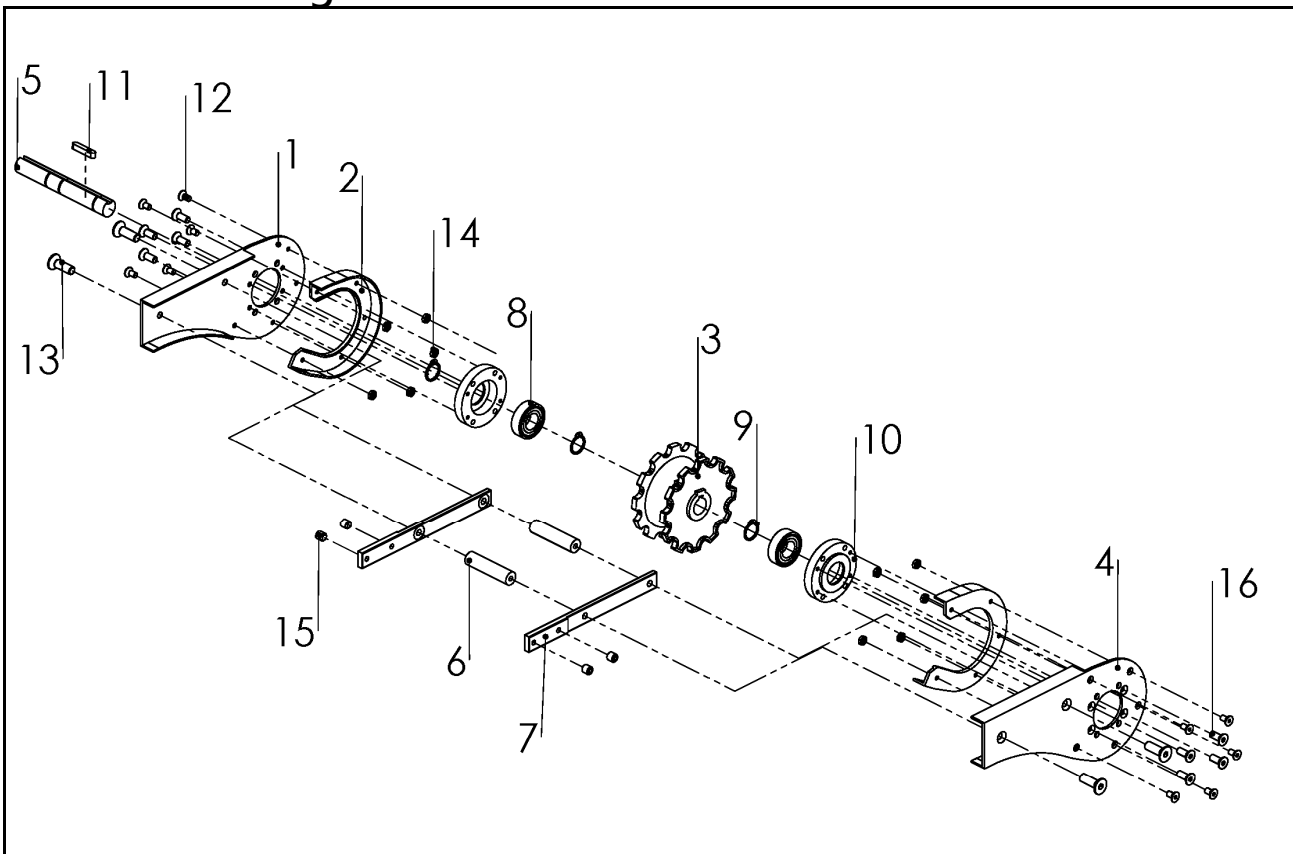
End drive unit, Basic unit



Item	Part No.	Description	Qty
1	F3904746S	Side plate-L	1
2	F3904234S	Side plate-R	1
3	F3925673S	Slack protection	2
4	F3904745A	Steering guide L	1
5	F3904312A	Steering guide R	1
6	Bearing fixed plate 6205	Bearing fixed plate	2
7	Bearing SS 6205	Bearing	2
8	Retaining ring	Retaining ring	3
9	F3904299A	Drive wheel	1
10	F3921123S	Connecting strip	2
11	F3904140S	Spacer(Φ20 L=82mm)	2
12	8x7-40 Key	Wedge	1
13	F3904403S	Drive Shaft	1
14	F3904744A	Guide L	1
15	F3904313A	Guide R	1
16	M8X20	Screw	4
17	M5 NUT	Nut	10
18	M5X10	Screw	10
19	M6X16	Screw	8
20	M8X8	Screw	4

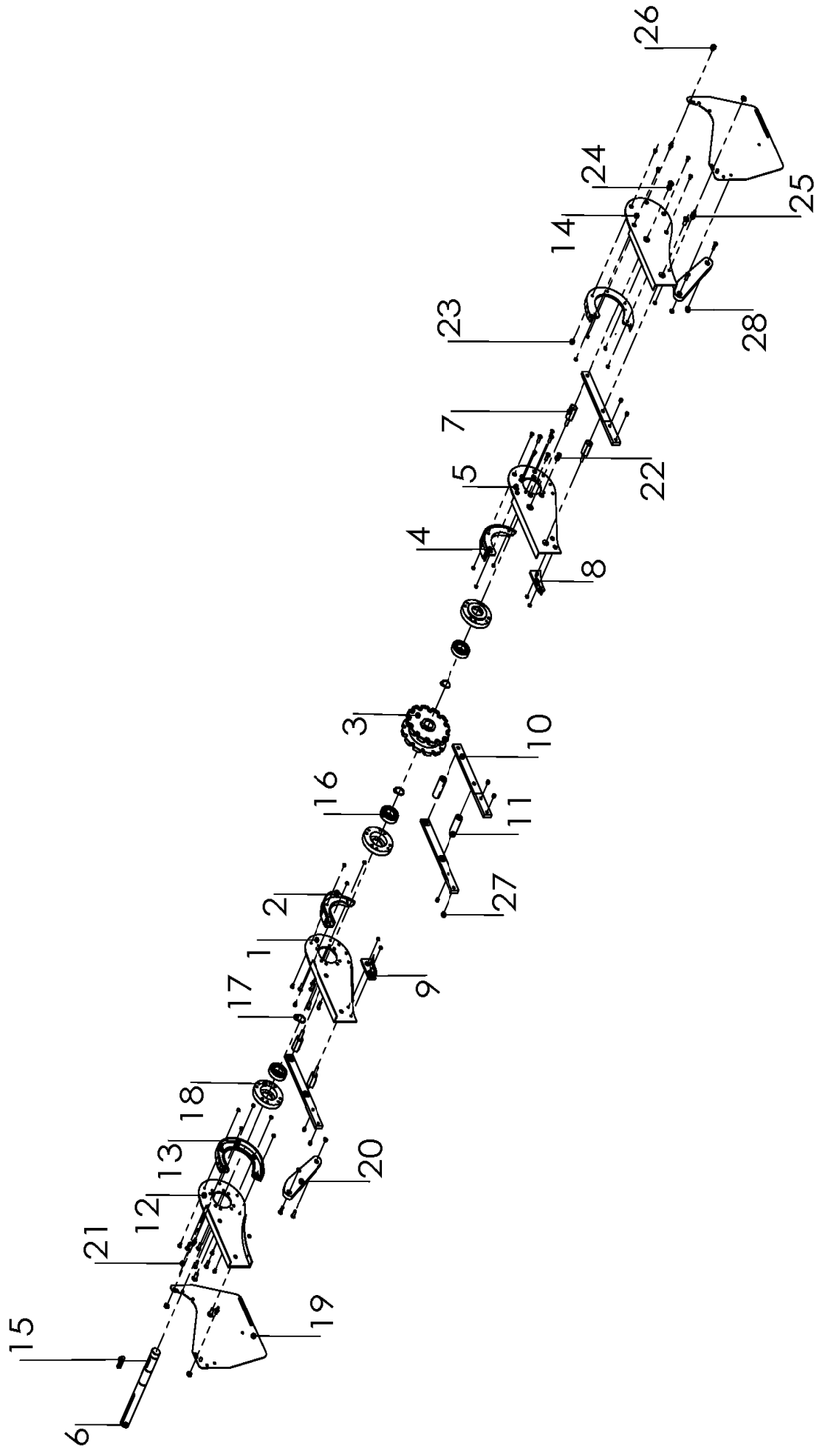
FHEBX 0HLGU/0HRGU

End drive unit.guided Basic unit



Item	Part No.	Description	Qty
1	F3921685S	Side plate L	1
2	F3921164A	Streering guide L	1
3	F3904299A	Drive wheel	1
4	F3921684S	Side plate R	1
5	F3904403A	Drive Shaft	1
6	F3904140S	Spacer($\Phi 20$ L=82mm)	2
7	F3921123S	Connecting strip	2
8	Bearing SS 6205	Bearing 6205	2
9	C rings	Retaining ring	3
10	Bearing flxed plate 6205	Bearing flxed plate	2
11	key	8x7-30	1
12	M5x12	Screw	10
13	M8x8	Screw	4
14	M5 NUT	NUT	10
15	M8x8	Screw	4
16	M6x16	Screw	8

FBEBX 0A 175 LU/RU
End drive unit , direct drive

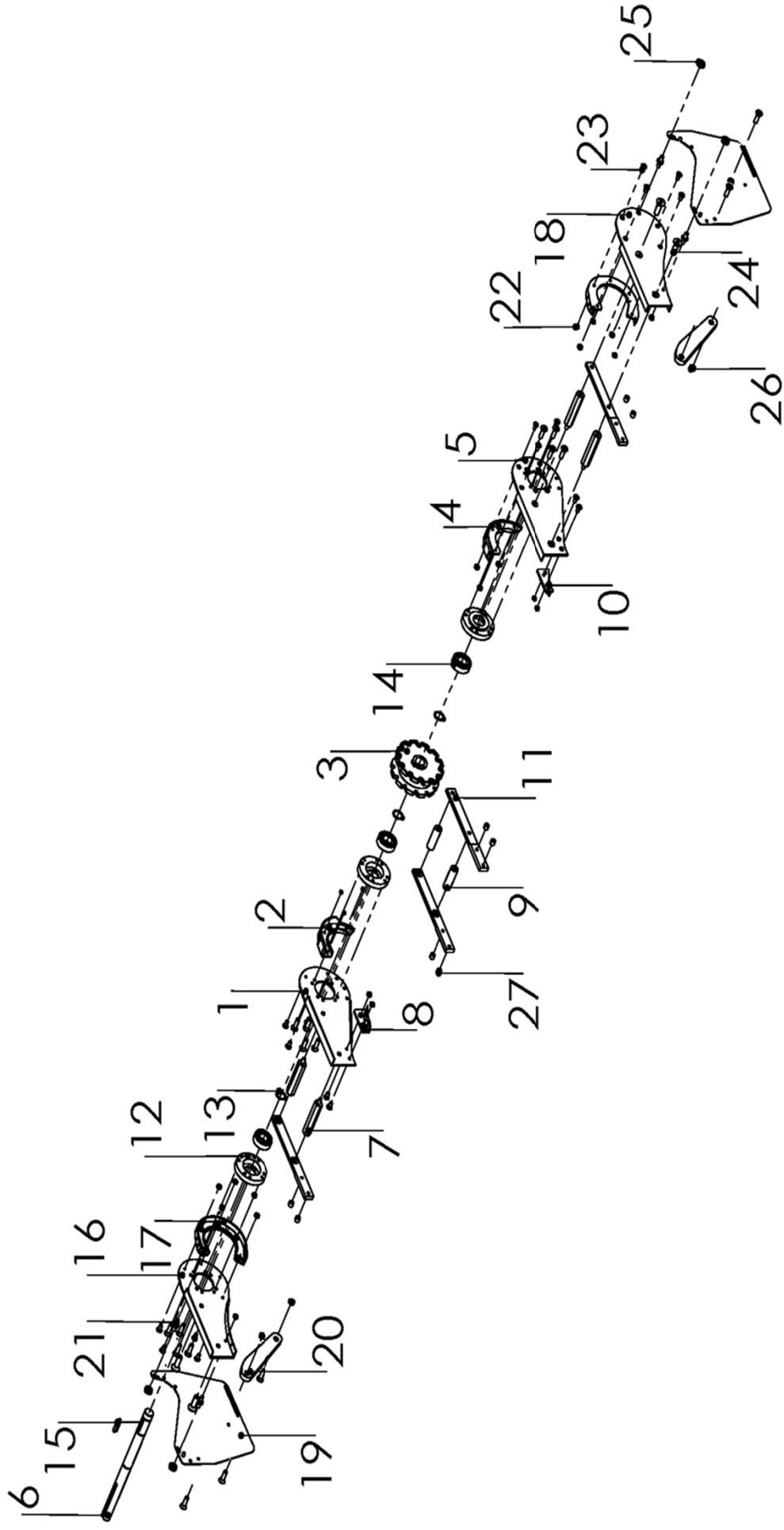


FBEBX 0A 175 LU/RU

End drive unit , direct drive

Item	Part No.	Description	Qty
1	F3904741S	Side plate L	1
2	F5043878A	Steering Guide L	1
3	F3904457A	Drive wheel	1
4	F5043877A	Steering Guide L	1
5	F3904458S	Side plate R	1
6	F5046379A	Shaft	1
7	Connecting Nut M8X26(S)	Screw	4
8	F5043879	Guide R	1
9	F5043880	Guide L	1
10	F3921123S	Connecting strip	4
11	F5044322S	Spacer(Φ20 L=62mm)	2
12	F3921675S	Side plate L	1
13	F5043876A	Guide	1
14	F3921674S	Side plate R	1
15	Wedge 8x7-40	Wedge	1
16	Bearing SS 6205	Bearing	3
17	Retaining ring	Retaining ring	3
18	Bearing fixed plate 6205	Bearing fixed plate	3
19	F3925673S	Slack Protection	2
20	F5048259	Guide	2
21	M5x10	Screw	22
22	M6x16	Screw	16
23	M5 Nut	Nut	22
24	M8X25	Screw	4
25	F3925718	Screw	4
26	M8 Nnt	Nut	4
27	M8x8	Screw	4
28	M6 Nnt	Nut	4

FBEBX 0A 295 LU/RU
End drive unit , direct drive



FBEBX 0A 295 LU/RU

End drive unit , direct drive

Item	Part No.	Description	Qty
1	F3904741S	Side plate L	1
2	F5043878A	Steering Guide L	1
3	F3904457A	Drive wheel	1
4	F5043877A	Steering Guide R	1
5	F3904458S	Side plate R	1
6	F3926267A	Shaft	1
7	F5044322S	Spacer	2
8	F5043880	Guide L	1
9	F5044322S	Spacer(Φ 20 L=62mm)	2
10	F5043879	Guide R	1
11	F3921123S	Connecting strip	4
12	Bearing flxed plate 6205	Bearing flxed plate	3
13	C rings	Retaining ring	3
14	Bearing SS 6205	Bearing	4
15	Wedge 8X7-40	8X7-40	1
16	F3921675S	Side plate L	1
17	F5043876A	Guide R /GuIde L	2
18	F3921674S	Side plate R	1
19	F3925673S	Slack protection	2
20	F5048259	Guide	4
21	F3924718	Screw	4
22	M5 Nut	Nut	22
23	M5x10	Nut	22
24	M8x25	Screw	4
25	M8 NUT	Screw	4
26	M6xNUT	Nut	4
27	M8x8	Screw	4
28	M6x16	Screw	12